

SPECIAL POINTS OF INTEREST:

- It is important to ensure that all externally hired excavator operators also implement these work practices & that quick hitch safety pins are used correctly to ensure all workers, equipment & worksites are safe.

- If there is any doubt about the location or installation of the safety pin approach the operator & ask them to show you that the pin is correctly fitted.

PLANT CONTACT DETAILS

Hunter Valley & Rolling Stock :
Scott Dunn
 0401 142 991

North-South:
Scott Chillingworth
 0417 499 239

Resurfacing:
Simon Lee
 0409 744 751

National:
Greg Whelan
 0428 294 922



Safe Use of Quick Hitch Devices on Excavators

The purpose of this safety bulletin is to ensure that all workers are made aware of the importance of ensuring that the quick hitch safety pin on an excavator quick hitch device is always engaged when using attachments on the machine eg. Bucket, tamping attachment, sleeper grab etc.

A quick hitch safety pin is designed to ensure that an attachment, once correctly attached to the quick hitch, can not dislodge from the excavator until the operator intentionally removes the quick hitch safety pin to change attachments. Failure to ensure correct fitting of the quick hitch safety pin can result in serious injury or death.

Figure 1 shows a photo of a quick hitch safety pin (indicated by red arrow) used on the Yanmar excavators in the **disengaged** position.

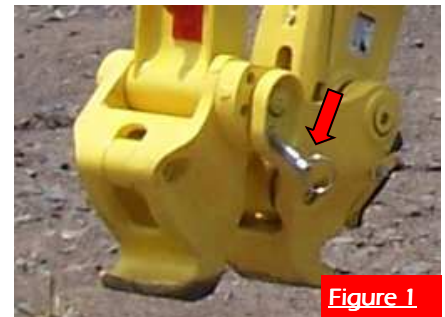


Figure 2 shows a photo of a quick hitch safety pin (indicated by red arrow) used on the Yanmar excavators in the **engaged** position. (Some machines have different designs for quick hitch safety pins refer to the relevant operator manual for clarification)

An excavator **must not** be operated without the quick hitch safety pin being fitted to ensure the safety of workers & the worksite in general. Quick hitches shall only be used to support attachments specifically designed to fit the excavator and specifically designed for the duty to be undertaken as per AS4772-2008.

It is also important to ensure that all workers remain outside the excavator work area & at no stage are workers to be underneath a suspended load.

Every ARTC Yanmar excavator should have an operating manual in the cabin which will explain the correct operation of the quick hitch. If for some reason a machine does not have an operating manual contact your local Plant Coordinator. As with all equipment utilised by ARTC teams daily inspections in line with the daily checklist list must be carried out prior to starting work with any faults to be reported to your local Plant Coordinator.

Below are a number of links to websites which outline incidents caused by failure to correctly use a quick hitch safety pin.

http://mines.industry.qld.gov.au/assets/inspectorate/incident_report063.pdf

http://www.commerce.wa.gov.au/worksafe/PDF/Safety_alerts/2004/02-04_Excavator_bucket_not_secured.pdf

<http://esvc000896.wic023u.server-web.com/pdf/saexcavatorquickhitchpinremoval.pdf>

Never use an excavator attachment without a quick hitch safety pin being correctly fitted