



**CODE OF PRACTICE
FOR
OPERATIONS & SAFEWORKING**

**NETWORK INTERFACE
CO-ORDINATION PLAN**

DOCUMENT No. TA02

ISSUE 2.1

01 JUNE 2006

APPENDIX XIII

ARTC GRADES

PORT AUGUSTA TO WHYALLA

28 February 2007

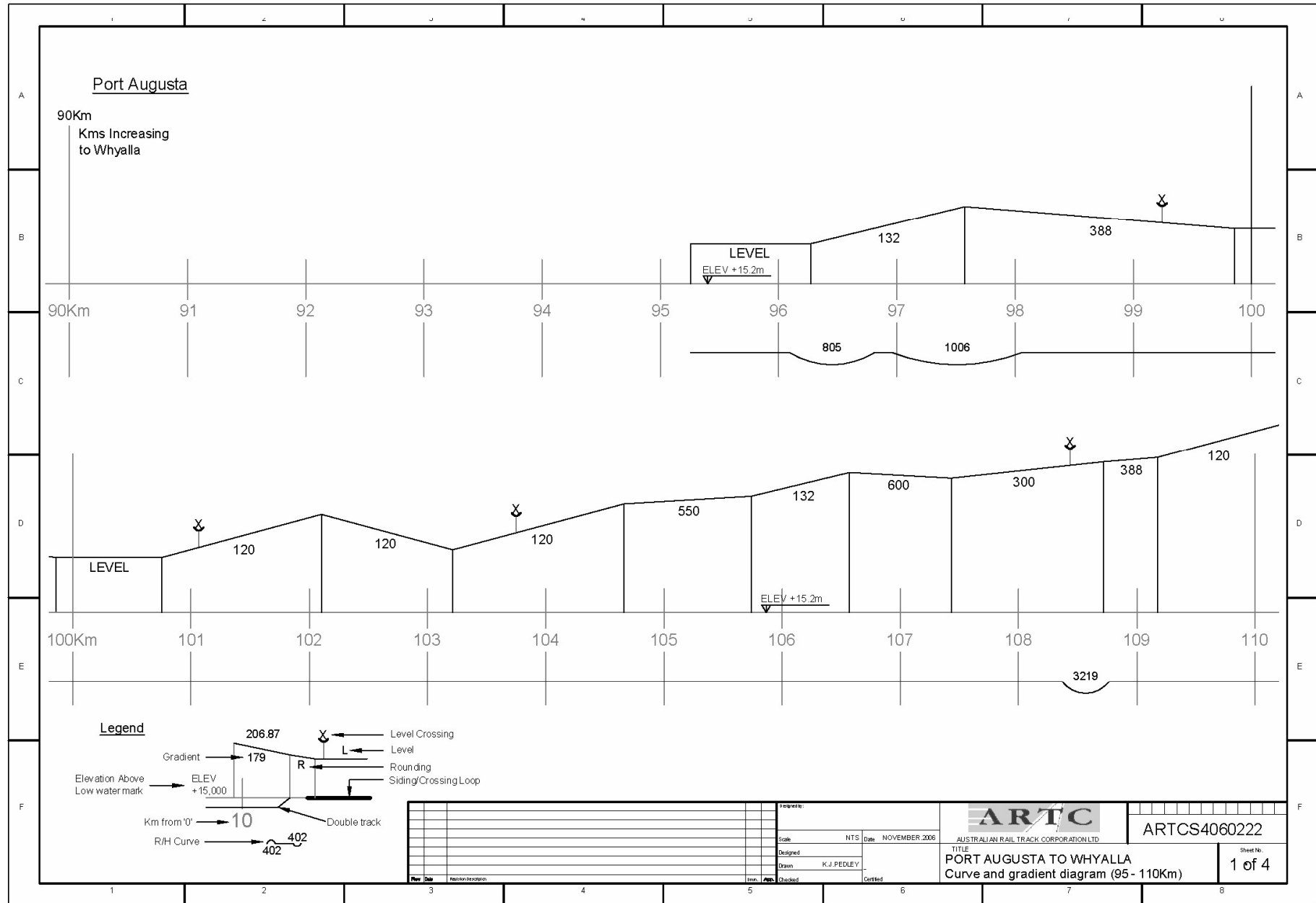
DOCUMENT UNCONTROLLED WHEN PRINTED

CURVE AND GRADIENT DIAGRAM
PORT AUGUSTA TO WHYALLA
From 95.32km (Port Augusta) to 168km (Whyalla)

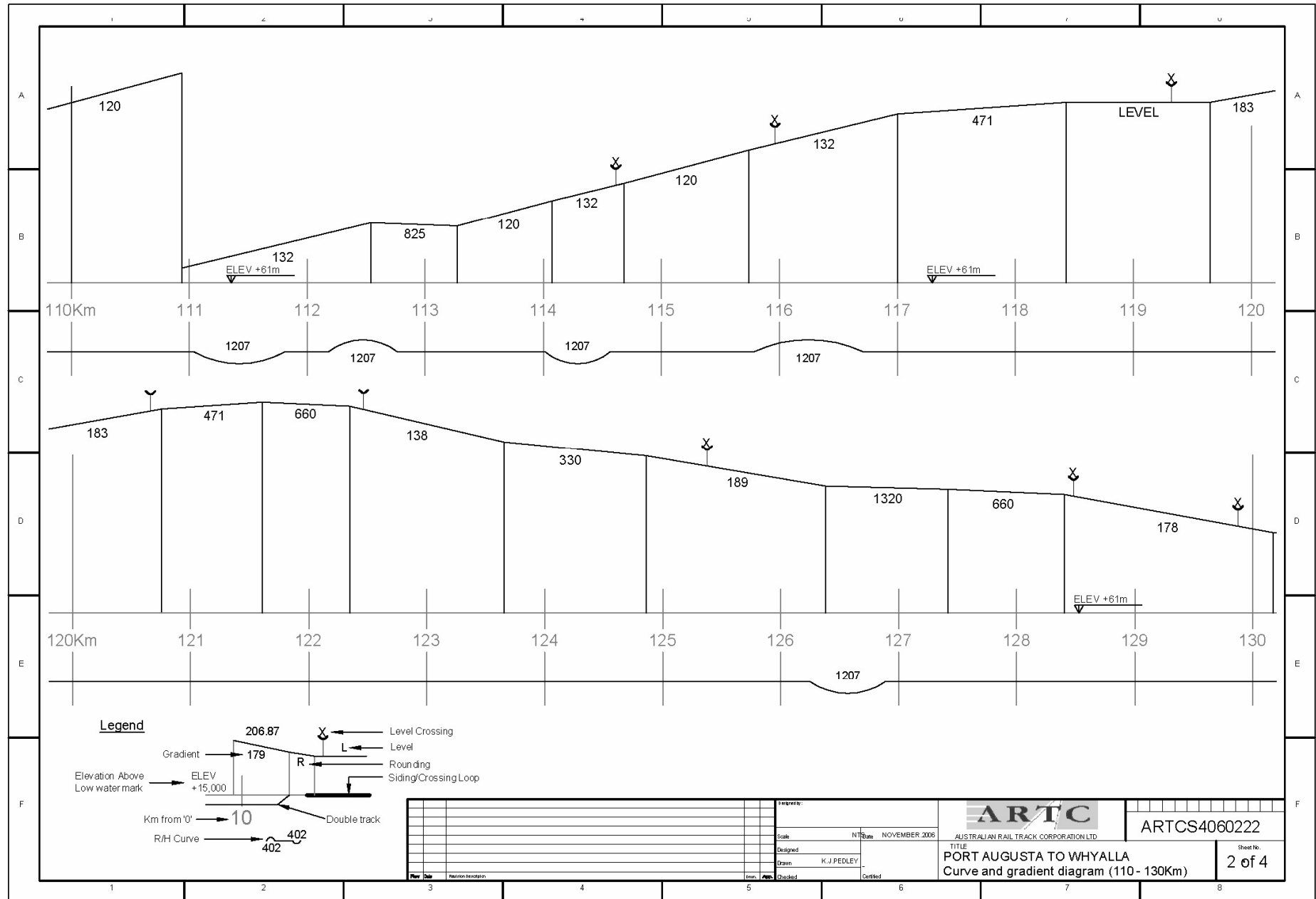
**The following diagrams are based on historical data that may not have been updated for recent works/realignments.
They are only approximate and should be used for guidance only.**

It is planned to progressively update the Curve and Gradient Diagrams when current GPS surveys are completed.

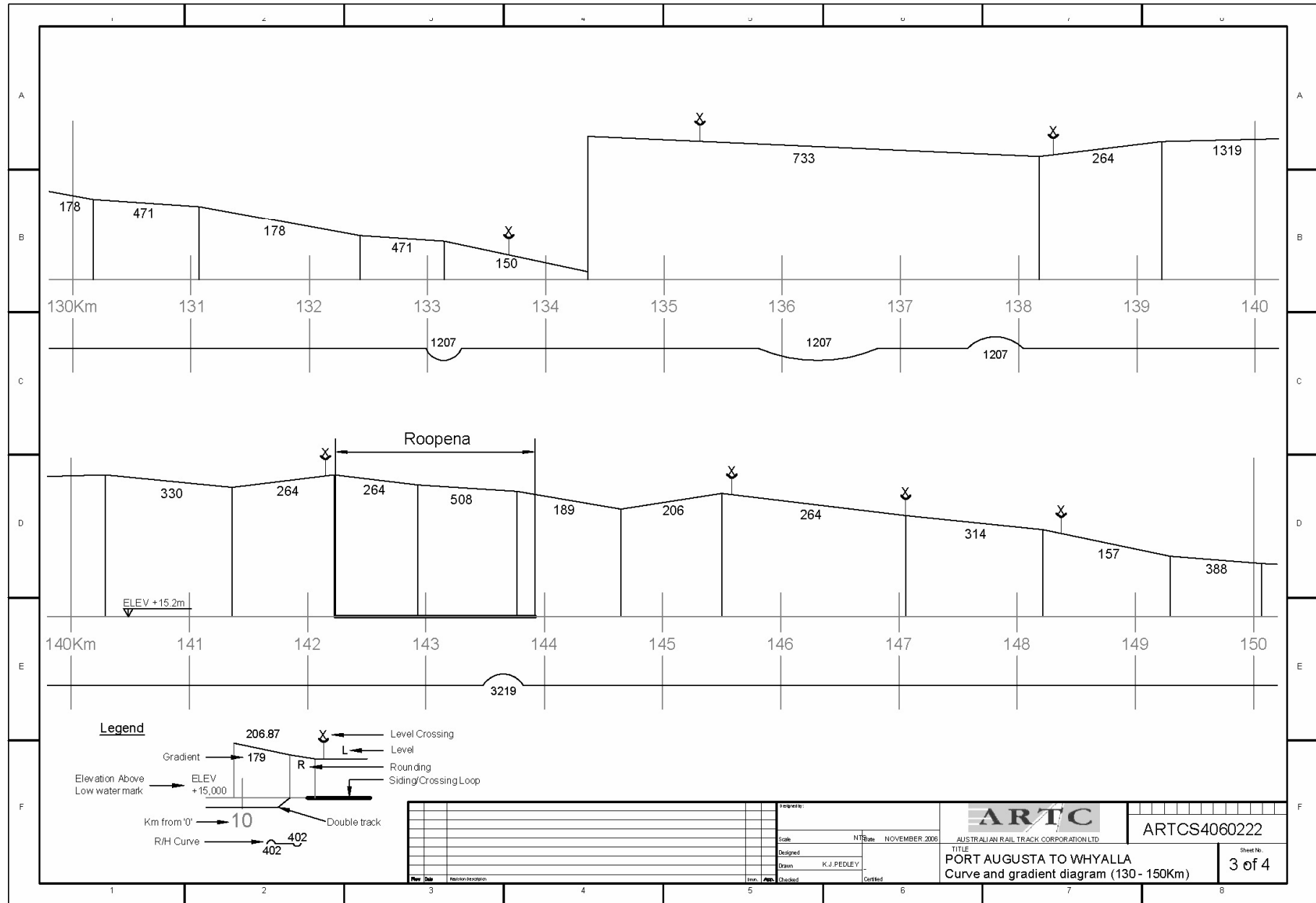
Grades: Port Augusta to Whyalla



Grades: Port Augusta to Whyalla



Grades: Port Augusta to Whyalla



Grades: Port Augusta to Whyalla

