



**CODE OF PRACTICE
FOR
OPERATIONS & SAFEWORKING**

**NETWORK INTERFACE
CO-ORDINATION PLAN**

***DOCUMENT No. TA02
ISSUE 2.1
01 JUNE 2006***

***APPENDIX XIII
ARTC GRADES
ADELAIDE TO SERVICETON
20 October 2008***

DOCUMENT UNCONTROLLED WHEN PRINTED

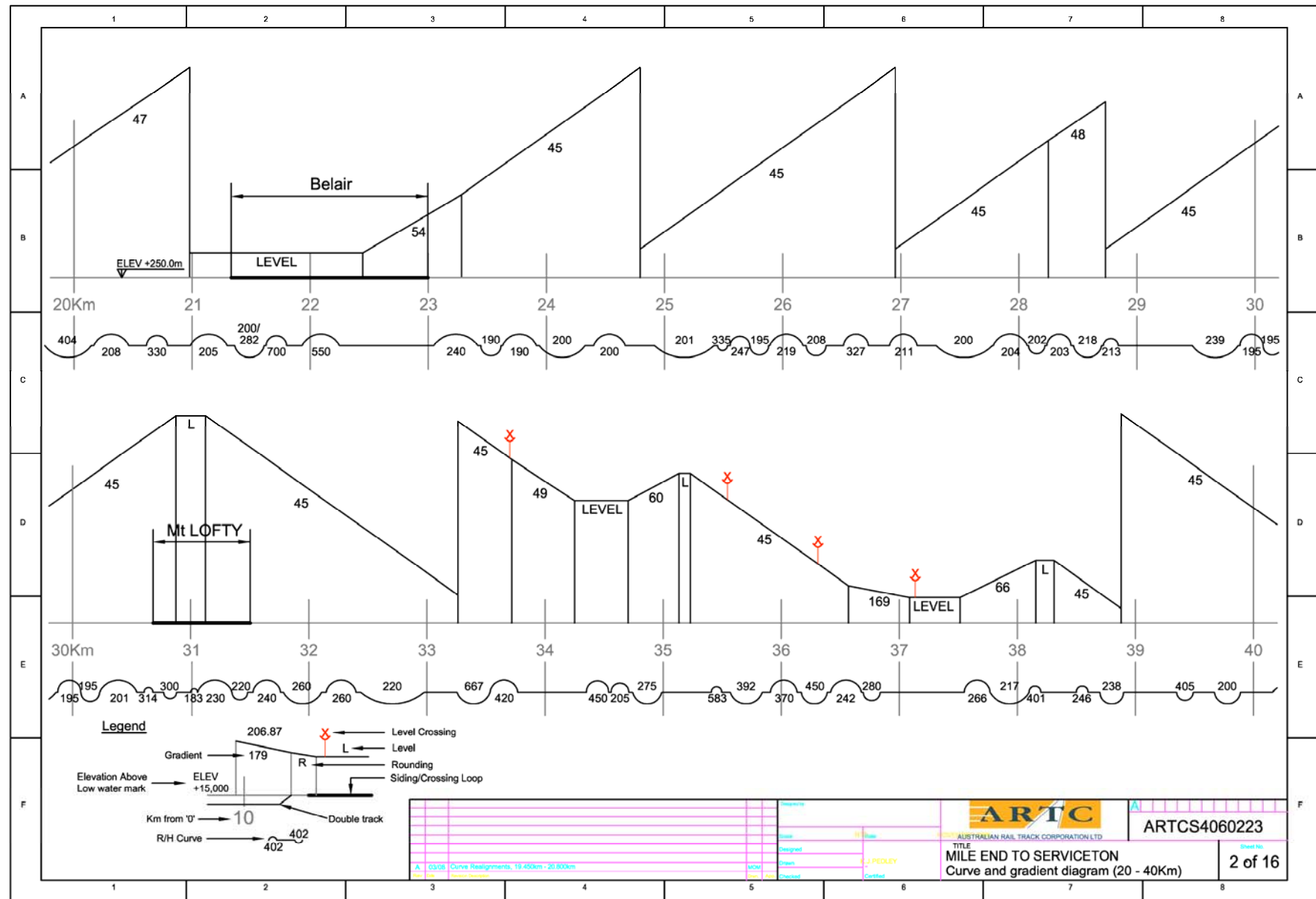
CURVE AND GRADIENT DIAGRAM
ADELAIDE TO WOLSELEY
From 0km (Keswick) to 313.21km (Vic Border)

**The following diagrams are based on historical data that may not have been updated for recent works/realignments.
They are only approximate and should be used for guidance only.**

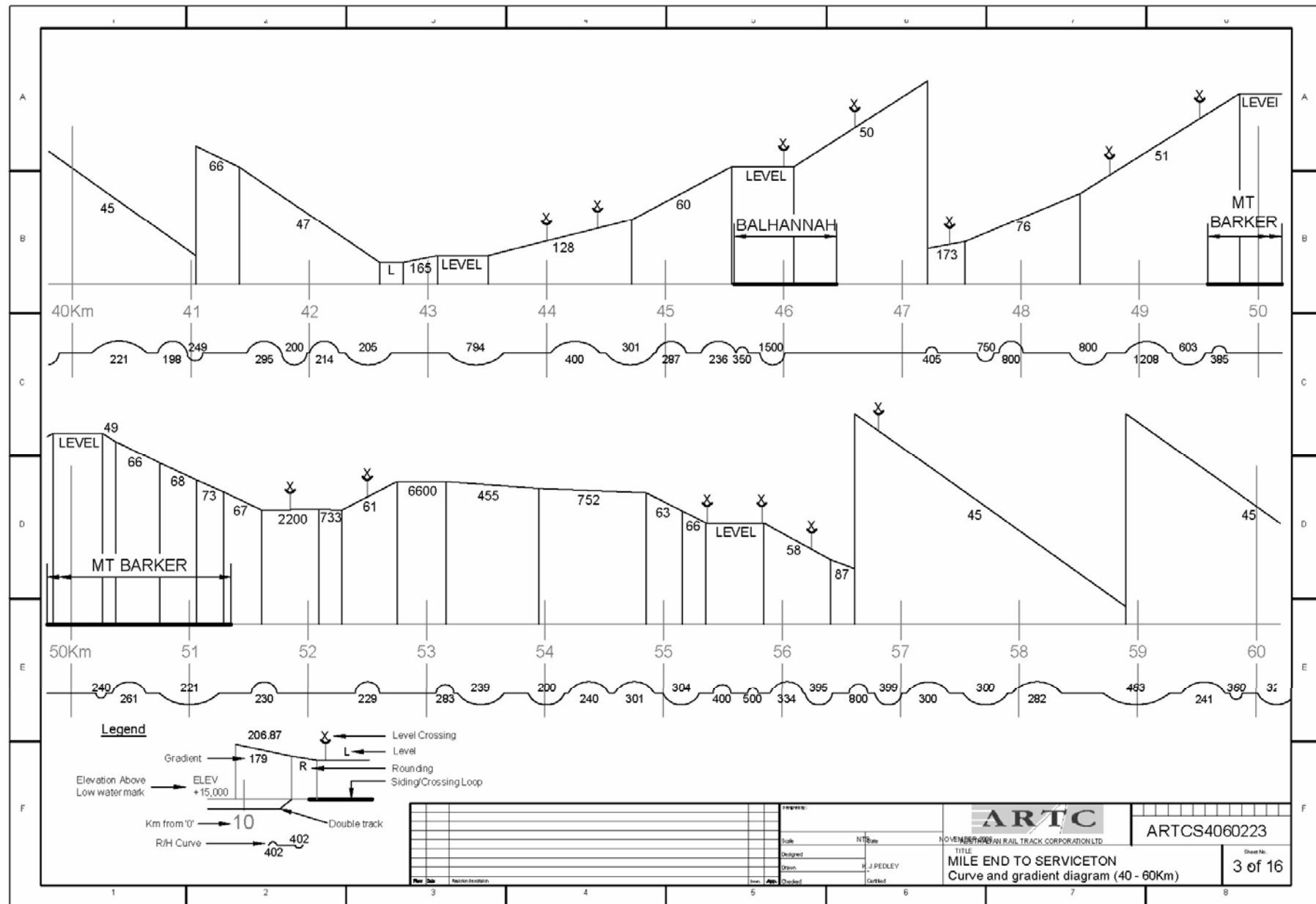
It is planned to progressively update the Curve and Gradient Diagrams when current GPS surveys are completed.

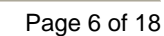


Grades: Adelaide to Serviceton

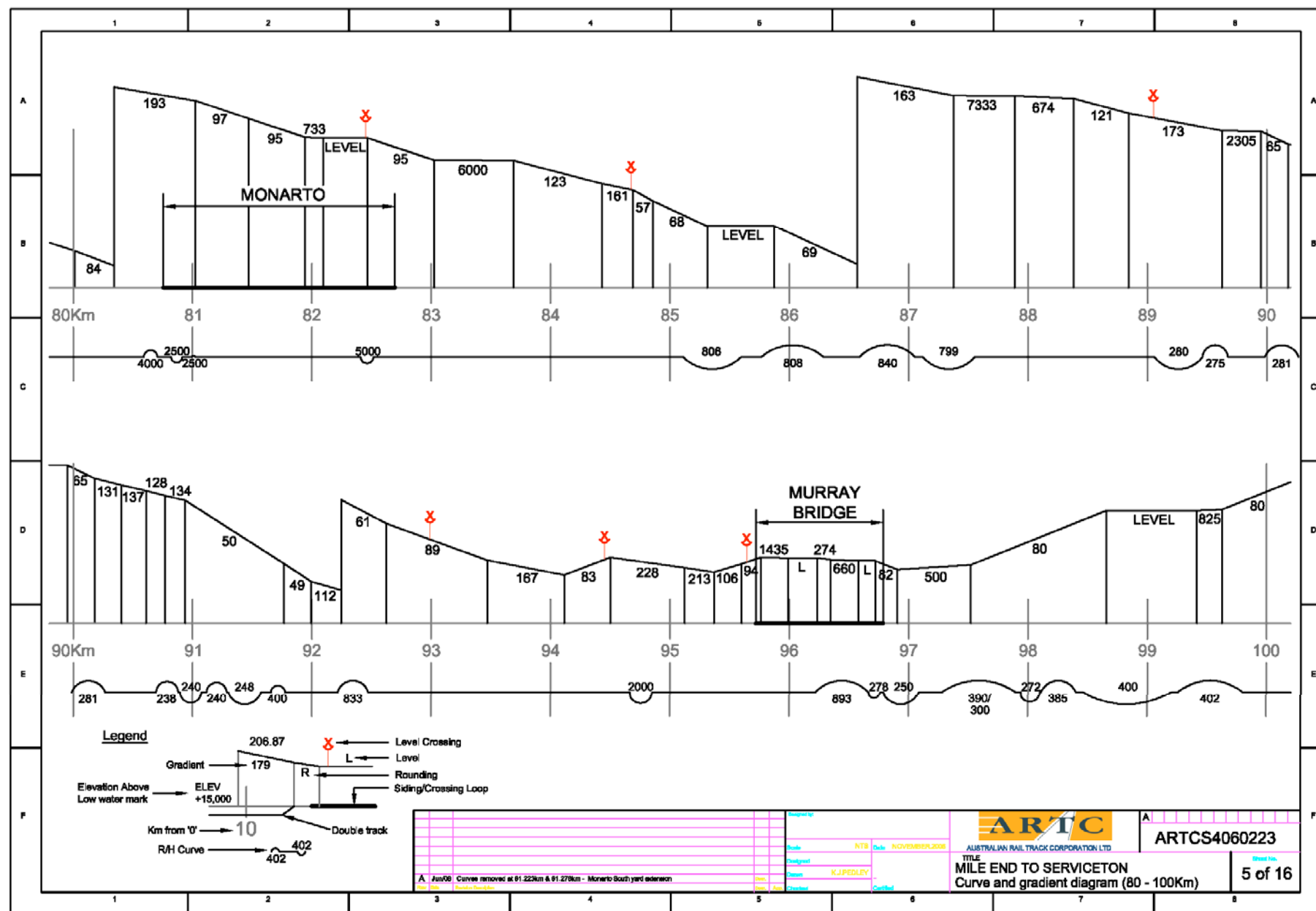


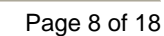
Grades: Adelaide to Serviceton



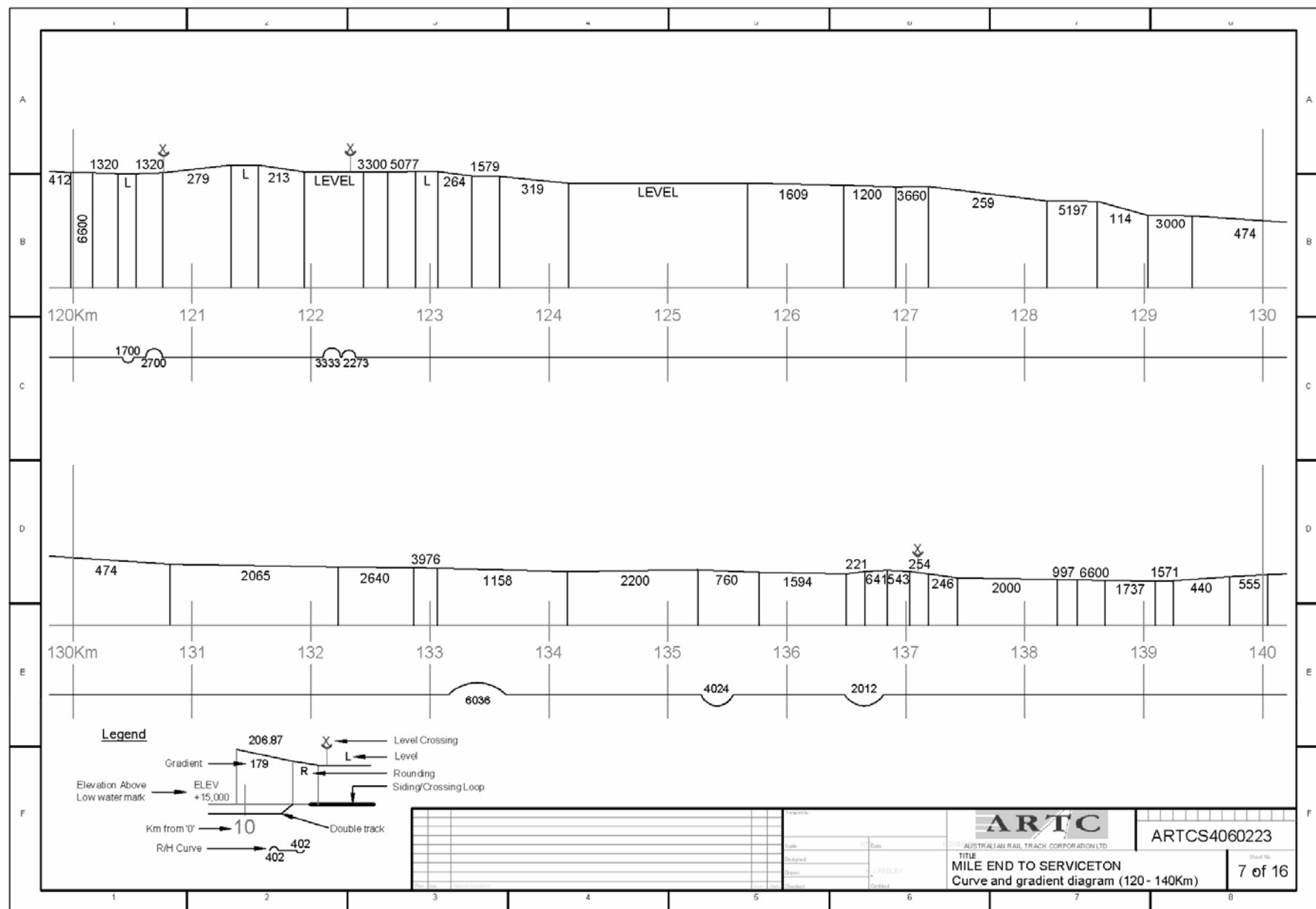


Grades: Adelaide to Serviceton

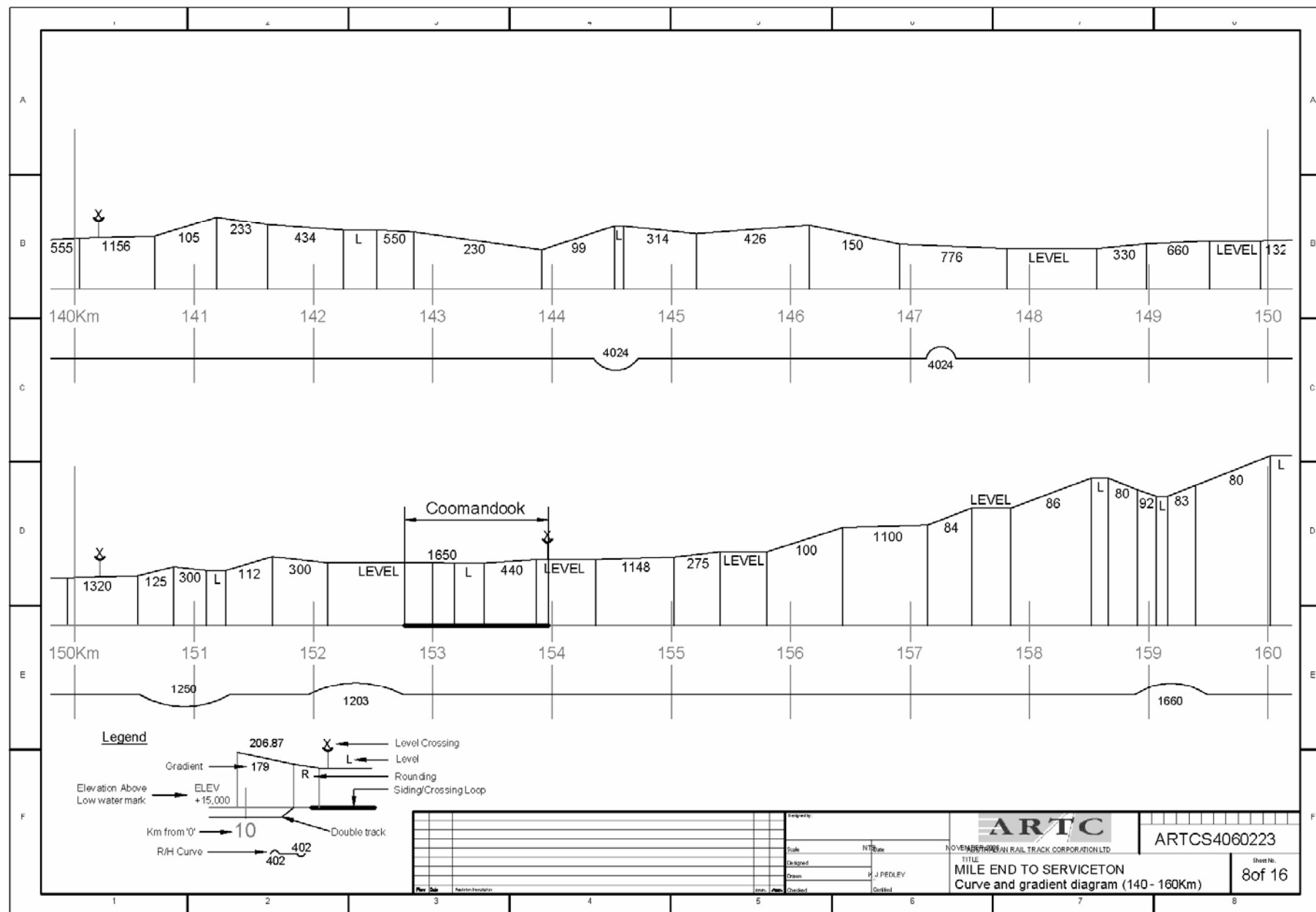




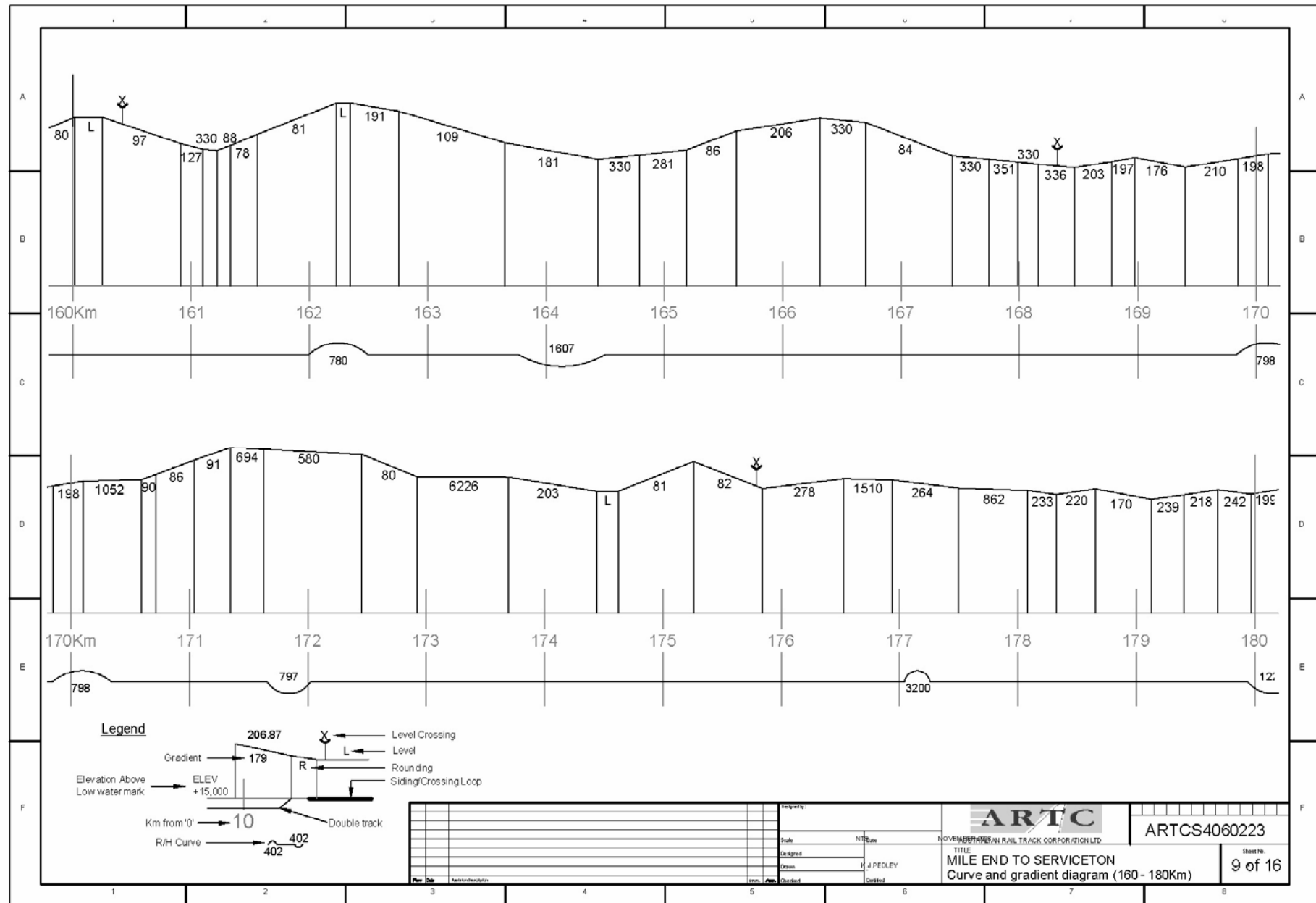
Grades: Adelaide to Serviceton



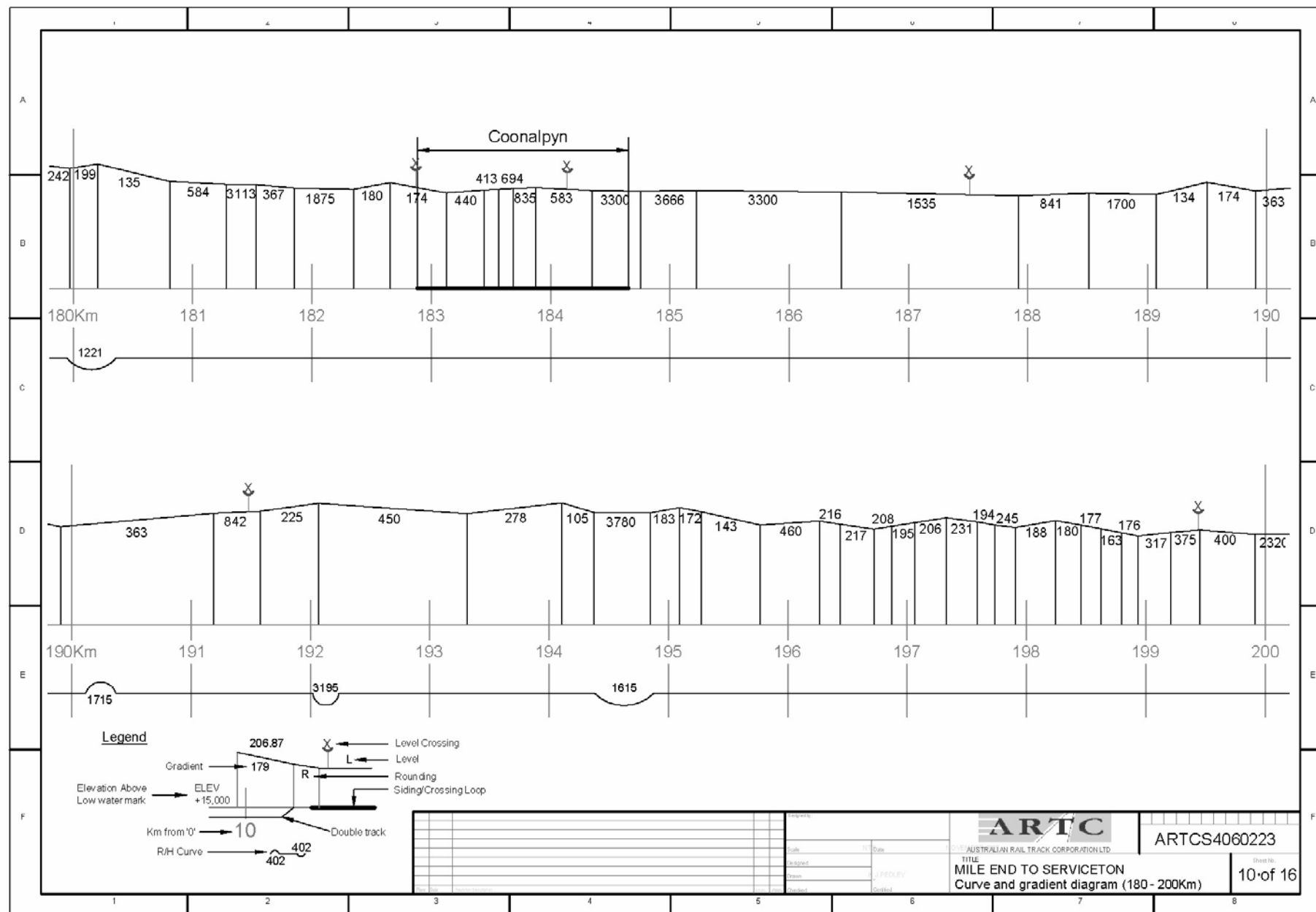
Grades: Adelaide to Serviceton



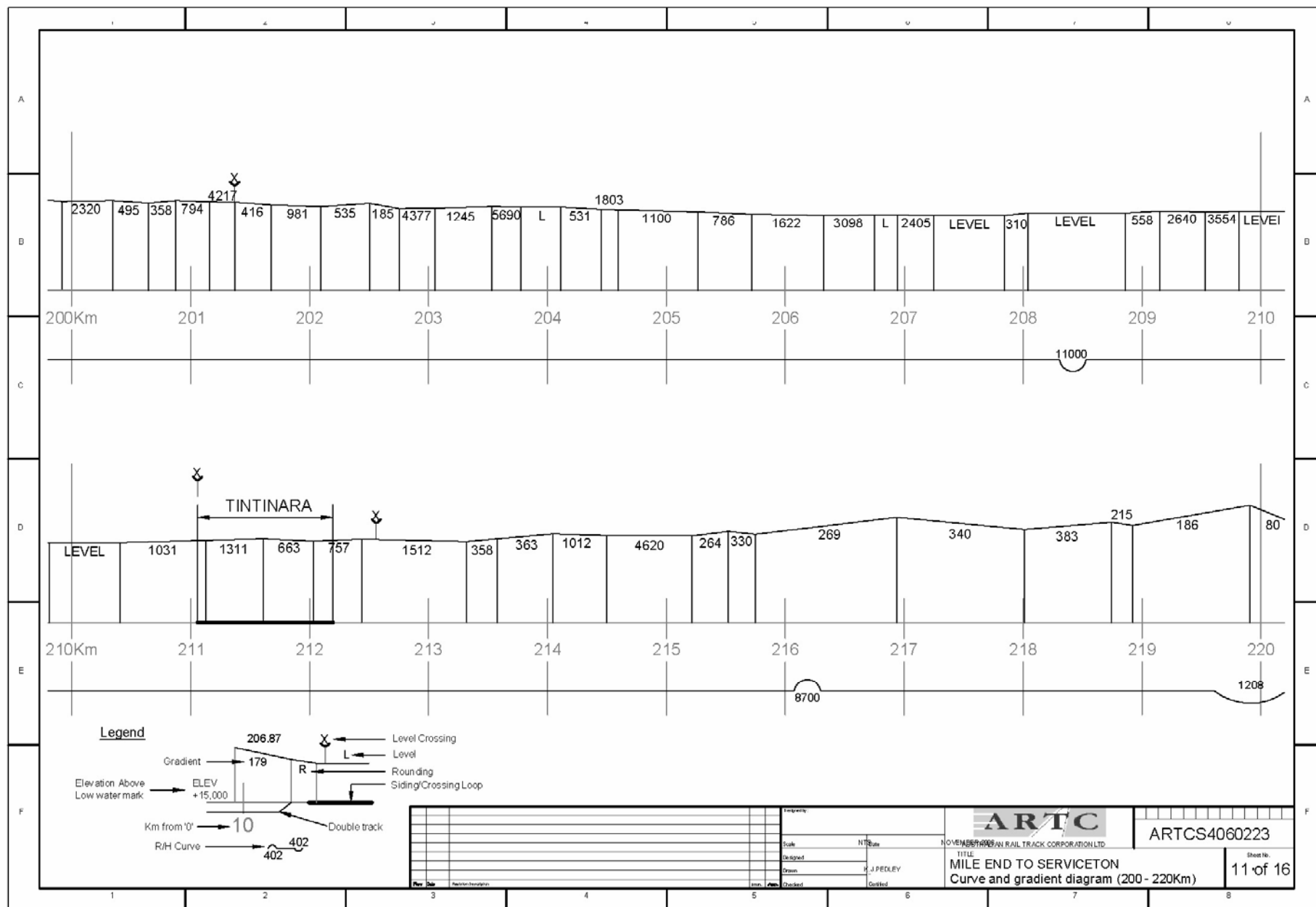
Grades: Adelaide to Serviceton



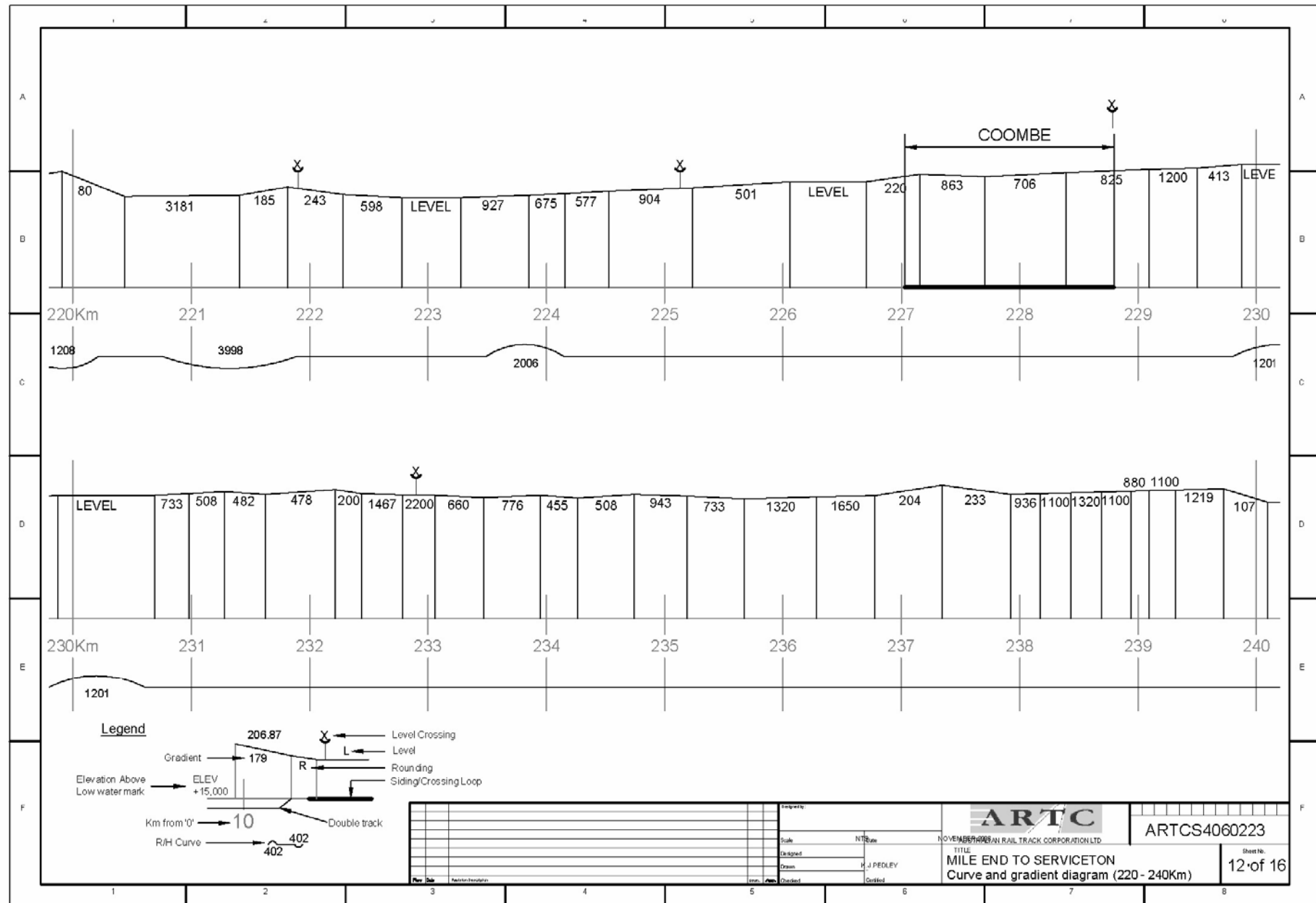
Grades: Adelaide to Serviceton



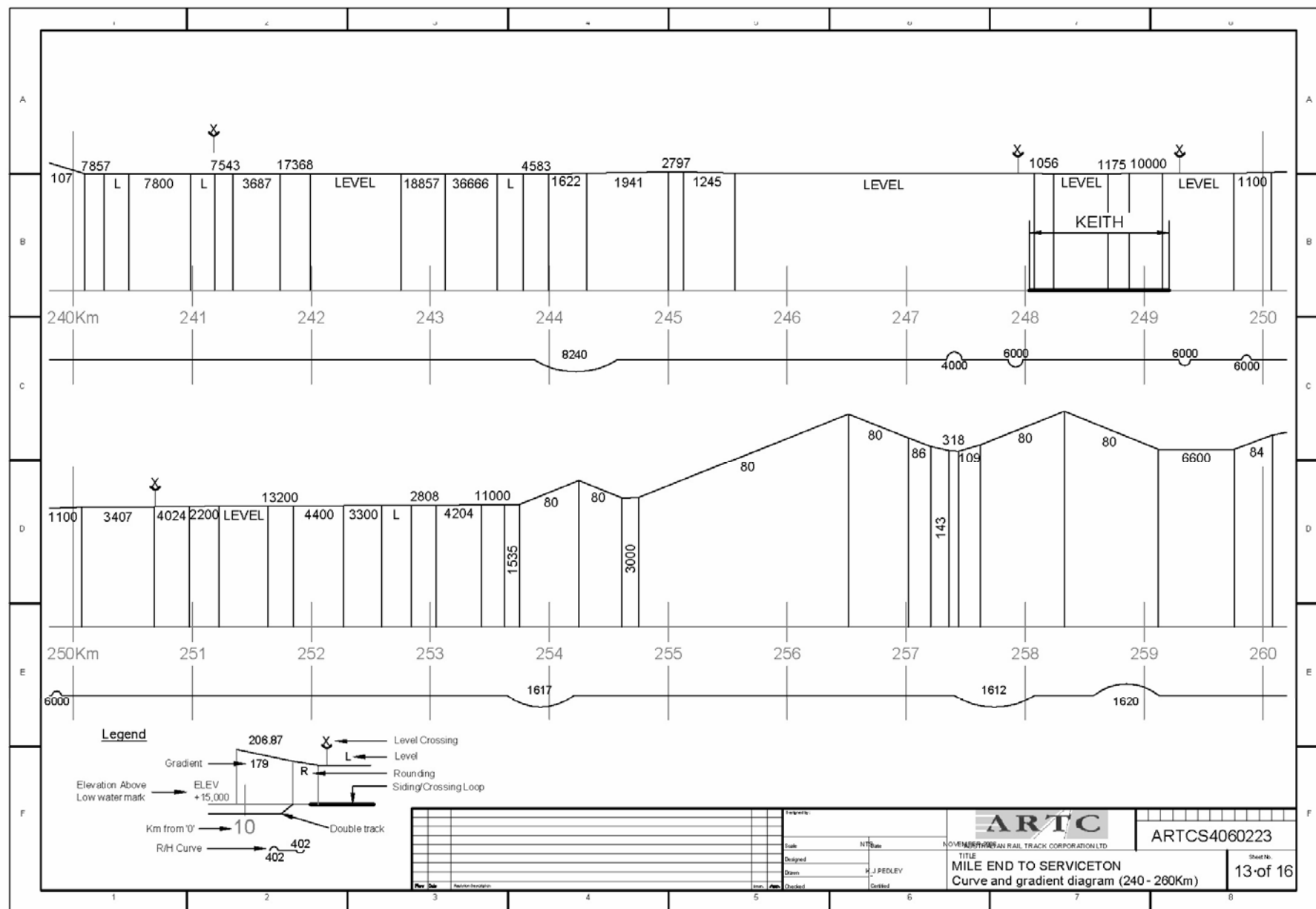
Grades: Adelaide to Serviceton

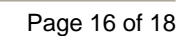


Grades: Adelaide to Serviceton

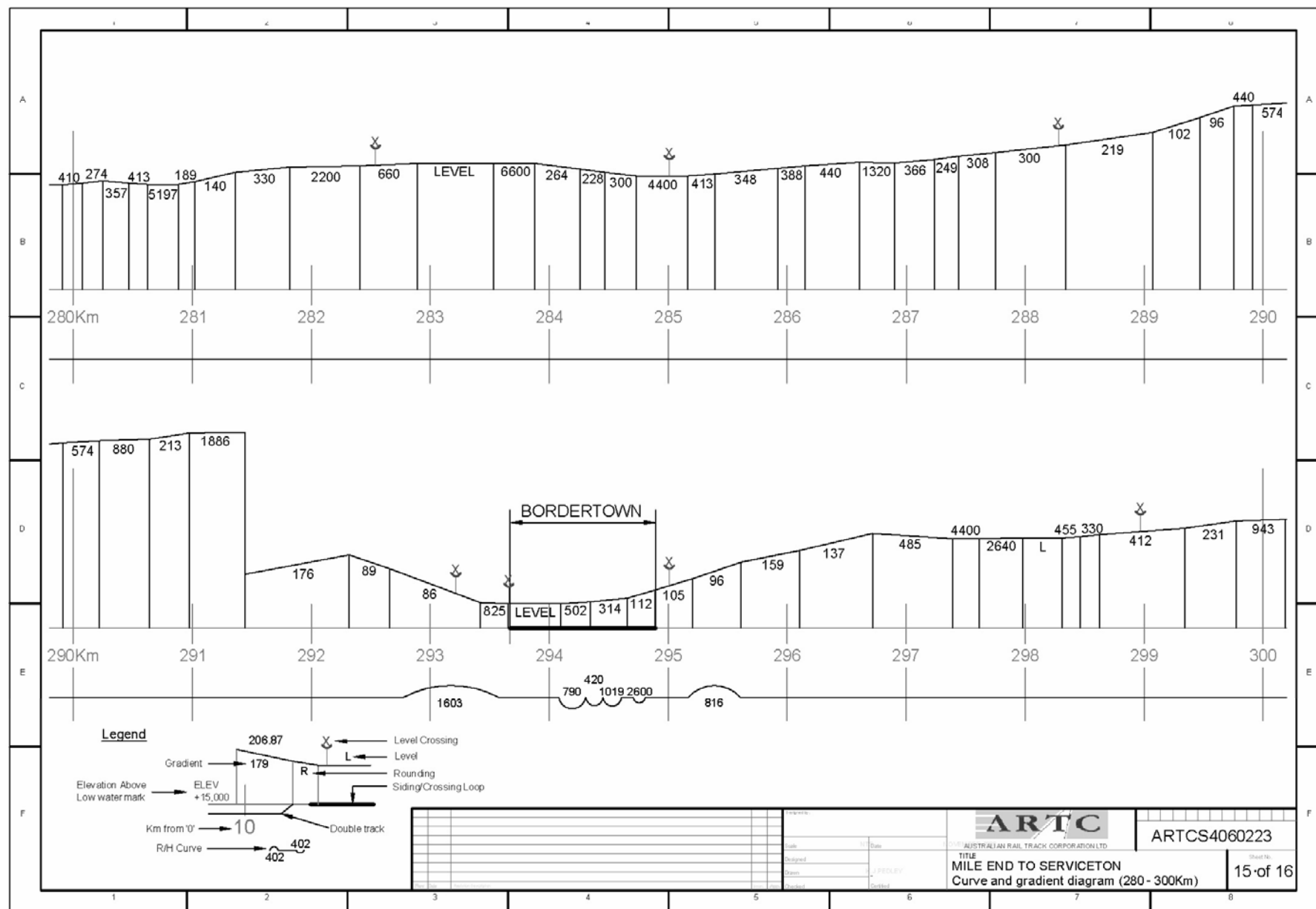


Grades: Adelaide to Serviceton





Grades: Adelaide to Serviceton



Grades: Adelaide to Serviceton

