

Asset List Work Instruction

AMT-WI-018

Applicability

ARTC Network Wide

Publication Requirement

Internal / External

Primary Source

Document Status

| Version # | Date Reviewed | Prepared by | Reviewed by | Endorsed | Approved |
|-----------|---------------|---|---|--|--|
| 1.0 | 31 July 2022 | Cathy Wilson Business Configuration Analyst, Operational Readiness | Brett White Business Configuration Analyst, Assets | Rob Rath Operations Readiness Manager | Ben Leske General Manager, Development and Planning |

Amendment Record

| Amendment Version # | Date Reviewed | Clause | Description of Amendment |
|------------------------|---------------|--------|---|
| 1.0 | 31 July 2022 | | First Issue. The Asset List Work Instruction provides instructions for the populating of an Asset List for all existing, new, modified and decommissioned assets for a Project. |

Disclaimer

This document has been prepared by ARTC for internal use and may not be relied on by any other party without ARTC's prior written consent. Use of this document shall be subject to the terms of the relevant contract with ARTC.

ARTC and its employees shall have no liability to unauthorised users of the information for any loss, damage, cost or expense incurred or arising by reason of an unauthorised user using or relying upon the information in this document, whether caused by error, negligence, omission or misrepresentation in this document.

This document is uncontrolled when printed.

Authorised users of this document should visit ARTC's intranet or extranet (www.artc.com.au) to access the latest version of this document.

Table of Contents

| | |
|---|-----------|
| Table of Contents | 2 |
| 1 Introduction..... | 4 |
| 1.1 Purpose | 4 |
| 1.2 Scope | 4 |
| 1.3 Procedure Owner | 5 |
| 1.4 Responsibilities | 5 |
| 1.5 Parent Procedure | 7 |
| 1.6 Reference Documents | 7 |
| 1.7 Systems Used | 7 |
| 1.8 Definitions..... | 8 |
| 2 Work Instruction | 11 |
| 2.1 Step 1 - Extract and Distribute Current Asset List from Ellipse – Stage 2 (Reference Design) .. | 11 |
| 2.2 Step 2 – Populating the Asset List - Stage 2 (Reference Design), Stage 4 (Detailed Design) and Stage 5 (Project Construction) | 12 |
| 2.3 Step 3 – Asset List Quality Check by ARTC Representative – Stage 4 (Detailed Design) and Stage 5 (Project Construction) | 19 |
| 2.4 Step 4 – Asset List Quality Check and Acceptance by ARTC – Stage 4 (Detailed Design) and Stage 5 (Project Construction) | 20 |
| 2.5 Step 5 – Creation of Nameplates – Stage 4 (Detailed Design) and Stage 5 (Project Construction) | 20 |
| 2.6 Step 6 – Review and Acceptance – Stage 4 (Detailed Design) and Stage 5 (Project Construction) | 21 |
| 2.7 Step 7 - Change Authorisation Form – Stage 4 (Detailed Design) | 21 |
| 2.8 Step 8 – Uploading into Ellipse – Stage 4 (Detailed Design)..... | 21 |
| 2.9 Step 9 – Update Asset List and Nameplates during Construction and Commissioning – Stage 5 (Project Construction) | 21 |
| 2.10 Step 10 – MST Creation - Stage 5 (Project Construction) | 21 |
| 3 Appendices | 22 |
| 3.1 Appendix A – Asset List Work Instruction Workflow | 22 |
| 3.2 Appendix B – CREATE Asset List Template | 23 |
| Appendix B – CREATE Asset List Template (continued)..... | 24 |
| 3.3 Appendix B1 – CREATE Asset List Example – Track and Civil | 25 |
| Appendix B1 – CREATE Asset List Example – Track and Civil (continued)..... | 26 |
| 3.4 Appendix B2 – CREATE Asset List Example – Structures..... | 27 |
| Appendix B2 – CREATE Asset List Example – Structures (continued) | 28 |

Table of Contents

| | | |
|------|--|----|
| 3.5 | Appendix B3 – CREATE Asset List Example – Signalling..... | 29 |
| | Appendix B3 – CREATE Asset List Example – Signalling (continued) | 30 |
| 3.6 | Appendix C – REMOVED Asset List Example..... | 31 |
| | Appendix C – REMOVED Asset List Example (continued)..... | 32 |
| | Appendix C – REMOVED Asset List Example (continued) | 33 |
| | Appendix C – REMOVED Asset List Example (continued) | 34 |
| 3.7 | Appendix D – MODIFIED Asset List Example | 35 |
| | Appendix D – MODIFIED Asset List Example (continued) | 36 |
| | Appendix D – MODIFIED Asset List Example (continued) | 37 |
| | Appendix D – MODIFIED Asset List Example (continued) | 38 |
| | Appendix D – MODIFIED Asset List Example (continued) | 39 |
| 3.8 | Appendix E – CREATE Associated Equipment Items (AEI) Asset List Template | 41 |
| | Appendix E – CREATE Associated Equipment Items (AEI) Asset List Template (continued) | 42 |
| 3.9 | Appendix E1 – CREATE Associated Equipment Items (AEI) Asset List Example | 43 |
| | Appendix E1 – CREATE Associated Equipment Items (AEI) Asset List Example (continued) | 44 |
| 3.10 | Appendix E2 – MODIFIED Associated Equipment Items (AEI) Asset List Example | 45 |
| | Appendix E2 – MODIFIED Associated Equipment Items (AEI) Asset List Example (continued) | 46 |

1 Introduction

1.1 Purpose

The Asset List Work Instruction provides instructions for the populating of an Asset List for all existing, new, modified and decommissioned assets for a Project.

The Asset List Work Instruction:

- provides the steps involved in populating an “Asset List” and recording the “Asset List” in ARTC’s Asset Management System (Ellipse)
- nominates key roles and responsibilities integral to populating and managing the Asset List
- provides Asset List templates and examples.

Asset Lists are required to be created for each Project, including Inland Rail Projects.

1.2 Scope

The Asset List scope is defined as part of the Operational Readiness Framework and associated process for the following Project types:

- Enhancement works, such as:
 - asset relocation from track slewing or to achieve horizontal clearance
 - loop and siding extensions.
- Design and construction of:
 - brownfield projects
 - new greenfield corridors
 - new structures including bridges, tunnels and culverts
 - new loops and sidings
 - new technologies, such as Advanced Train Management System (ATMS).

This Work Instruction applies to all Projects being delivered under the following delivery strategies:

- full delivery integration by a Contractor, including design and construct contract
- full and / or partial delivery integration using a combination of:
 - design only contract
 - supply only contract
 - construct only contract
 - test only contract.

For Projects being delivered in separable portions or stages, an Asset List shall be populated for each separable portion or stage.

The Asset List Work Instruction aims to ensure consistent and compliant data and information is captured and stored for the management and maintenance of all assets.

Introduction

The Asset List Work Instruction is a live document and as such, is reviewed and updated as required to reflect the activities applicable to capturing and storing asset data and information.

The creation of Nameplates is in scope and addressed in this Work Instruction.

The creation of Maintenance Schedule Tasks (MST's) is out of the scope for the purpose of this Work Instruction, however key ARTC personnel who create MST's will conduct this work in parallel with the Asset List Work Instruction.

1.3 Procedure Owner

The General Manager Development and Planning is the Document Owner.

The Business Configuration Analyst, Assets is the initial point of contact for all queries relating to this Work Instruction.

1.4 Responsibilities

The ARTC Representative (Project Manager / Senior Project Manager) is responsible for the implementation of this Work Instruction.

The Business Configuration Analyst, Assets is responsible for managing the processes associated with this Asset List Work Instruction.

The ARTC Representative is responsible for initiating changes to the Asset List in accordance with this Work Instruction and ensuring changes are appropriate and correct.

The process for initiating, updating and recording changes in configuration to ARTC infrastructure is documented in the *Equipment Register – Updating and Maintenance Procedure (EGP-03-02)*.

The ARTC Area Manager, Signal Maintenance Engineer and Structures Manager are responsible for ensuring recommended changes are appropriate. In some circumstances, these roles may delegate this responsibility to the ARTC Representative.

The Asset List Template is managed by the Team Leader Asset Management System (refer to the *Equipment Register – Updating and Maintenance Procedure (EGP-03-02)*).

The ARTC template for creating a Nameplate is managed by the Asset Management Systems Manager and is located within the AMS Sharepoint Site

Key roles and responsibilities involved in populating and uploading the Asset List and Nameplates are outlined in the following table.

| Role | Responsibilities |
|---|--|
| Business Configuration Analyst, Assets | <p>The Business Configuration Analyst, Assets manages asset and configuration changes to ensure the new assets are compliant with ARTC requirements and integrate into the ARTC Network for operations and maintenance services. The Business Configuration Analyst, Assets is responsible for:</p> <ul style="list-style-type: none"> ensuring asset compliance of IFC and as-constructed asset data and information data validation and preparation to load asset data into Ellipse TEST (ETST) for review and approve to load into Ellipse Production (EPRD) and In Service (IS) supporting the Project teams and other functional areas with asset data and information matters compiling the <i>Change Authorisation Form (EGP-03-02F-01)</i> for each proposed asset change as described in the <i>Equipment Register – Updating and Maintenance Procedure (EGP-03-02)</i>. |
| ARTC Representative | <p>For the purpose of this Work Instruction, an ARTC Representative is identified as the Project Manager or Senior Project Manager.</p> <p>The ARTC Representative is responsible for defining the scope of work for each Project to identify and describe the assets, systems and processes to be changed and / or created. The role is primarily accountable for having an Asset List completed as part of the IFC Documentation and updated (if required) at completion of the Project as part of the As Constructed documentation.</p> |
| ARTC Asset Management Systems Manager | <p>The Asset Management Systems Manager develops the framework for the adaptation of asset information and data for ARTC's Asset Management System (Ellipse).</p> <p>The Asset Management Systems Manager is primarily responsible for creating an Asset List Template to satisfy ARTC's asset management requirements.</p> |
| ARTC Team Leader Asset Management System | <p>The Team Leader Asset Management System is responsible for creating and maintaining the ARTC Asset List Template extracted from Ellipse.</p> |
| ARTC Asset Management System Support Officer (ASSO) | <p>The Asset Management System Support Officer (ASSO) provides the Change Initiator (ARTC Representative) with the current asset data applicable to the asset change works.</p> <p>The Asset Management System Support Officer (ASSO) is responsible for:</p> <ul style="list-style-type: none"> checking asset data contained in the Asset List templates, supported by the Change Authorisation Form before loading into the Asset Management System updating the Asset Management System as required signing the Change Authorisation Form once the updates have been completed and return to the Change Initiator |

| Role | Responsibilities |
|----------------------------------|--|
| | <ul style="list-style-type: none"> obtaining and allocating new BaseCodes when required. |
| ARTC Area Manager | The Area Manager, or their approved delegate such as the ARTC Representative, is responsible for ensuring recommended changes populated in the Asset List are appropriate and correct. |
| ARTC Signal Maintenance Engineer | The Signal Maintenance Engineer, or their approved delegate such as the ARTC Representative, is responsible for ensuring recommended changes populated in the Asset List are appropriate and correct. |
| ARTC Structures Manager | The Structures Manager, or their approved delegate such as the ARTC Representative, is responsible for ensuring recommended changes populated in the Asset List are appropriate and correct. |
| Service Provider | The Service Provider is responsible for populating the Asset List, which is an identified design milestone deliverable, in accordance with this Work Instruction. |
| Construction Contractor | The Construction Contractor and sub-contractors are responsible for providing detailed information in accordance with identified construction completion, commissioning and handover milestone deliverables. |

1.5 Parent Procedure

The *Rail Network Configuration Management Procedure (EGP-03-01)* support this procedure.

1.6 Reference Documents

The following documents support this Work Instruction:

- Equipment Register - Updating and Maintenance Procedure (EGP-03-02)*
- Authorised Equipment Register MST Change Authorisation Form (EGP0302F-01)*
- Asset Management System Procedure (EGP-10-01)*
- Data Classification Work Instruction - Universal (EGW-10-02)*
- Data Classification Work Instruction - Structures (EGW-10-01)*
- Data Classification Work Instruction - Track and Civil (EGW-10-04)*
- Data Classification Work Instruction - Signal Systems (EGW-10-03)*
- Track and Civil Nameplates Work Instruction (EGW-10-17)*
- Inland Rail Kilometrage Strategy (0-0000-900-PEN-00-ST-0001).*

1.7 Systems Used

The following systems are used to capture and store asset data and information:

| System | Description |
|--|---|
| Enterprise Asset Management Systems (EAMS) | ARTC maintains an Enterprise Asset Management System (EAMS) to ensure assets are fit-for-purpose for allowing the operation of trains over ARTC infrastructure. EAMS enables ARTC to perform the core |

| System | Description |
|---|--|
| | responsibilities of capital investment in the network and managing and maintaining the infrastructure comprising the network. |
| Ellipse (Asset Management System) | ARTC maintains an Asset Management System to ensure assets are fit-for-purpose, managed and maintained. Ellipse is a proprietary enterprise resource planning software used by ARTC to assist in managing assets during the entire asset life cycle, from purchase through to disposal. |
| ARTC Enterprise Asset Management SharePoint Site. | The ARTC Enterprise Asset Management System SharePoint Site contains the Excel templates required for creating Asset Lists and Nameplates. This SharePoint Site is available to ARTC personnel only. |
| ACONEX / DMS | Aconex or Drawing Management System (DMS) is a document control system used for storing and managing project deliverables and documentation, including drawings, contracts, reports, schedules, tender bids, plans and other documentation and artefacts. |

1.8 Definitions

Specific terms and acronyms used throughout this Work Instruction are included in the following table:

| Term or acronym | Description |
|---------------------|---|
| ARTC | Australian Rail Track Corporation Ltd. |
| AEI | Associated Equipment Item The AEI is a controlled attribute containing a 10-character alphanumeric code. It provides additional asset data required to control defect types that may be created against the asset. AEI applies to structure and signalling cable assets. The requirements for the AEI to be included in the Asset List are described in: <ul style="list-style-type: none"> <i>Data Classification Work Instruction - Structures (EGW-10-01)</i> <i>Data Classification Work Instruction - Signal Systems (EGW-10-03).</i> |
| AMIP | Asset Management Improvement Program |
| AMS | Asset Management System |
| ARTC Representative | For the purpose of this Work Instruction, the ARTC Representative is the Project Manager or Senior Project Manager. |
| Asset List | The Asset List is the extraction of all asset data into a discrete tabular format from Ellipse for a given section of the Project. The Asset List is also known as the ARTC Ellipse Equipment Register when referencing ARTC procedures and work instructions relating to assets and equipment. |
| BaseCode | A BaseCode is a grouping of track elements that defines an individual track from nodal point to nodal point within one asset management corridor. |

There are a number of Business and Code Rules that must be applied when defining a BaseCode. These are described in:

- *Data Classification Work Instruction - Universal (EGW-10-02)*
- *Data Classification Work Instruction - Structures (EGW-10-01)*
- *Data Classification Work Instruction - Track and Civil (EGW-10-04)*
- *Data Classification Work Instruction - Signal Systems (EGW-10-03).*

| | |
|-------------------------|--|
| Construction Contractor | A Construction Contractor can be a company, collection of parties or individuals engaged by ARTC to perform and manage infrastructure construction for a Project to approved design and / or appropriate ARTC Standards and in accordance with an agreement. |
| Controlled attribute | An attribute that contains limited data types and is generally selected from a drop-down list. |
| Down End | Is the direction of increase in kilometrage. |
| EAMS | Enterprise Asset Management System |
| EGI | <p>Equipment Group Identifier</p> <p>The Equipment Group Identifier groups items of similar operating and maintenance characteristics. It is a controlled attribute containing a 6-character alpha or numeric code.</p> <p>The EGI is the primary mechanism used by Ellipse to identify what type of asset is being described by an equipment record. It is therefore essential to ensure that the appropriate EGI is associated with an asset to allow for the correct assignment of the Nameplate and MST's.</p> |
| Ellipse | Ellipse is a proprietary enterprise resource planning software used by ARTC to manage its assets. |
| Equipment Class | The Equipment Class is the highest level of hierarchy used to organise assets in Ellipse. It is a controlled attribute. |
| Equipment Number | A unique system generated 12-digit number used to relate equipment to the various modules in Ellipse. |
| Equipment Register | The Equipment Register or Asset List, records details of all infrastructure maintained by the ARTC. |
| IFC | Issued for Construction |
| IR | Inland Rail |
| MST | <p>Maintenance Schedule Task</p> <p>The MST is a record in the Equipment Register or Asset List to link a standard job from the Technical Maintenance Plan to an item of equipment with the inspection frequency and the last maintenance date to create a work order for the next preventative maintenance task.</p> |
| Nameplates | <p>Nameplates are used to store a variety of engineering characteristics against equipment / assets in Ellipse.</p> <p>Nameplates are defined against each EGI.</p> |

| | |
|------------------------|---|
| Project | <p>For the purpose of this Work Instruction, the following are considered to be representatives of the Project:</p> <ul style="list-style-type: none">• Designer / Service Delivery Contractor• Construction Contractor. |
| Service Provider | <p>For the purpose of this Work Instruction, Service Provider predominately means design consultancies engaged to provide design services.</p> |
| Uncontrolled attribute | <p>An attribute allowing free text fields that can hold any data type, subject to a character limit.</p> |
| Up End | <p>Is the direction of decrease in kilometrage.</p> |

2 Work Instruction

An overview of the steps outlined below are illustrated in the workflow included in Appendix A.

2.1 Step 1 - Extract and Distribute Current Asset List from Ellipse – Stage 2 (Reference Design)

An Asset List is to be created for each Project.

The ARTC Representative shall request an Asset List from the Configuration Business Analyst, Assets for the relevant Project during Reference Design (Stage 2).

The Configuration Business Analyst, Assets will request the Asset List via a Service Request through the ARTC Service Portal.

Asset Lists for existing assets in the Hunter Valley and Interstate Networks are extracted from ARTC's Asset Management System (Ellipse).

The Asset Lists are extracted from Ellipse in an excel spreadsheet format. A number of Asset List templates and examples are provided in the appendices to this Work Instruction.

For Projects being delivered in separable portions or stages, the ARTC Representative shall develop an Asset List for each separable portion or stage.

For greenfield projects, the Asset List extracted from Ellipse will essentially be blank as there is no existing asset information and data to extract for these projects. For greenfield projects, every asset will be considered as new and will need to be created by the Service Provider in Detailed Design (Stage 4).

Asset Lists will need to be populated and / or updated for each of the following asset / configuration changes:

- **CREATED** – for new infrastructure / equipment and systems being added to the ARTC Network
- **REMOVED** – for infrastructure / equipment and systems that are redundant and to be removed from the ARTC Network
- **MODIFIED** – for current infrastructure / equipment and systems “IN SERVICE” that will be modified, including being relocated for use in a different location or as an Equipment Identification (ID) change. MODIFIED assets shall keep the same Ellipse Equipment Number for the asset life cycle. The modifications to the infrastructure / equipment will be captured and recorded in the Asset List and Nameplates.
- **EXISTING NOT IN ELLIPSE** – for infrastructure / equipment and systems that are captured in the ARTC Network and not recorded in Ellipse. These assets shall be inspected by an ARTC SME. If the asset is “IN SERVICE”, it shall be loaded into Ellipse. All columns of the Asset List Template shall be completed for EXISTING NOT IN ELLIPSE assets. An Ellipse Equipment Number will be generated by ARTC as it is loaded.
- **CREATED ASSOCIATED EQUIPMENT ITEMS (AEI)** – for new Associated Equipment Items (AEI) that are Structures, Signalling and / or other applicable equipment that have an AEI in the ARTC Network.
- **REMOVED ASSOCIATED EQUIPMENT ITEMS (AEI)** - Associated Equipment Items (AEI) that are to be removed from Structures, Signalling or other applicable equipment that have an AEI in the ARTC Network.

- MODIFIED ASSOCIATED EQUIPMENT ITEMS (AEI) - Associated Equipment Items (AEI) that are Structures, Signalling and / or other applicable equipment existing in the ARTC Network that shall be MODIFIED (relocated for use in a different location or an Equipment Identification (ID) change). These shall keep the same Ellipse Equipment Number for the asset life cycle. The modifications to the infrastructure / equipment will be captured and recorded in the Asset List and Nameplates.

The following table provides the user with a guide to the types of Asset Lists, as per the list above, that will be required for a given discipline.

| Asset List | Disciplines | | | |
|-------------------------|-----------------|------------|------------|-------------|
| | Track and Civil | Structures | Signalling | Environment |
| Create (New) | ✓ | ✓ | ✓ | ✓ |
| Remove | ✓ | ✓ | ✓ | ✓ |
| Modify | ✓ | ✓ | ✓ | ✓ |
| Existing not in Ellipse | ✓ | ✓ | ✓ | ✓ |
| Create AEI | | ✓ | ✓ | |
| Remove AEI | | ✓ | ✓ | |
| Modify AEI | | ✓ | ✓ | |

For Inland Rail Projects, the ARTC Representative shall provide section and kilometrage details as outlined in the *Inland Rail Kilometrage Strategy (0-0000-900-PEN-00-ST-0001)* when requesting an Asset List for an Inland Rail Project.

The Configuration Business Analyst, Assets shall extract the Asset List from Ellipse and distribute it to the relevant ARTC Representative for populating. The Service Provider shall populate and submit a revised Asset List as part of the Project's design milestone deliverables.

2.2 Step 2 – Populating the Asset List - Stage 2 (Reference Design), Stage 4 (Detailed Design) and Stage 5 (Project Construction)

Once extracted from Ellipse, the Asset List is provided to the ARTC Representative in Reference Design (Stage 2). The ARTC Representative shall forward it onto the Service Provider for populating.

The Asset List shall require several iterations of populating.

The Service Provider shall populate and

submit a revised Asset List as part of the Project's design milestone deliverables

The Service Provider shall provide a revised Asset List as part of the Issued for Construction (IFC) Documentation at the end of Stage 4.

The Construction Contractor shall provide the final As-Constructed Asset List at the end of Stage 5.

For assets with an Associated Equipment Items (AEI), which consists of elements of the equipment (such as parent and child equipment), a discrete piece of subordinate equipment is to be applied to describe each element of the asset. For example, there will be AEI

equipment records per girder on a bridge or signal cable in signalling cables. There are different EGI codes to represent Associated Equipment Items (AEI).

The requirements for AEI to be included in the Asset List Template are detailed in the following Data Classification Work Instructions:

- *Data Classification Work Instruction - Structures (EGW-10-01)*
- *Data Classification Work Instruction – Signal Systems (EGW-10-03).*

Assets with an Associated Equipment Item (AEI) will need to capture the additional AEI data in a separate Asset List.

An Asset List Template containing AEI data is provided in Appendix E. Associated Equipment Items (AEI) Asset List Examples for new / CREATE assets are provided in Appendix E1 and for MODIFIED assets in Appendix E2.

The Service Provider (at the end of Stage 4) and the Construction Contractor (at the end of Stage 5) shall populate the Asset List with:

- amendments to existing asset data
- inclusion of new assets
- existing assets to be removed and / or replaced
- capture assemblies and Associated Equipment Items (AEI).

The following table provides the “fields” to be populated in deriving the Asset List. This information should be read in conjunction with the Asset List Templates and Examples provided in the appendices to this Work Instruction.

The responsibility for populating each “field” is provided in the following table.

Clarification on contents is described where deemed necessary.

| Title | Description | Completed by |
|---------------|--|------------------|
| Action | <p>One of the following attributes shall be selected in the Action column (Column A):</p> <ul style="list-style-type: none"> • CREATE (NEW) • REMOVED • MODIFIED • EXISTING NOT IN ELLIPSE. <p>An additional ACTION column (Column A) shall be inserted by the Service Provider in the Asset List and populated with the below actions:</p> <ul style="list-style-type: none"> • CREATE (NEW) • REMOVED • MODIFIED • EXISTING NOT IN ELLIPSE. | Service Provider |

| Title | Description | Completed by |
|-------|--|--|
| | <p>CREATE: For NEW assets that have no previous equipment history in Ellipse, new asset data is required to be populated.</p> <p>For NEW assets, CREATE shall be populated in the ACTION column (Column A).</p> <p>Column A shall be highlighted YELLOW with all corresponding cells in the row to be populated.</p> <p>Refer to CREATE Asset List Template (Appendix B) and CREATE Asset List Examples (Appendix B1, Appendix B2 and Appendix B3).</p> <p>All NEW assets are to be captured in the Nameplates. Refer to Step 5.</p> | Service Provider / Construction Contractor |
| | <p>For all assets that will be removed, REMOVED shall be populated in the ACTION column (Column A).</p> <p>The entire row shall be highlighted RED.</p> <p>All contents of the REMOVED row are to be preserved and not changed.</p> <p>Refer to REMOVED Asset List Example in Appendix C.</p> <p>For all assets that will be replaced with a new asset, such as a level crossing upgraded from passive to active or culverts to bridges, if the existing asset is to be “totally” removed and a new asset created, apply the CREATE and REMOVED rules above.</p> | Service Provider / Construction Contractor |
| | <p>For assets that will be modified, MODIFIED shall be populated in the ACTION column (Column A).</p> <p>The MODIFIED cell shall be highlighted BLUE.</p> <p>All contents of the MODIFIED row are to be preserved and not changed.</p> <p>Refer to MODIFIED Asset List Example in Appendix D.</p> <p>All data to existing modified assets that are to remain are recorded in an additional column next to the change. The column shall be titled MOD and contain the modified data for the asset (such as the km change or asset ID change).</p> | Service Provider / Construction Contractor |

| Title | Description | Completed by |
|---------------------------|--|--|
| | <p>EXISTING EQUIPMENT NOT IN ELLIPSE signifies details that are missing from the original Asset List populated from Ellipse, however asset information and data has been discovered as part of the new design.</p> <p>Where this occurs, the EXISTING EQUIPMENT NOT IN ELLIPSE shall be populated in the ACTION column (Column A).</p> | Service Provider / Construction Contractor |
| | ARTC Interstate Network shall issue a new equipment number for CREATE (NEW) assets and where an EXISTING EQUIPMENT NOT IN ELLIPSE is flagged. | Configuration Business Analyst, Assets |
| Equipment Number | <p>EQUIPMENT NUMBER is a unique system generated 12-digit number used to identify equipment.</p> <p>Any assets to be retained will keep the existing EQUIPMENT NUMBER.</p> | Configuration Business Analyst, Assets. |
| Equipment Class | <p>EQUIPMENT CLASS is the highest level of hierarchy used to organise assets in Ellipse.</p> <p>EQUIPMENT CLASS is a controlled attributed and is selected from the criteria for the respective discipline in the Data Classification Work Instruction.</p> <p>The EQUIPMENT CLASS contains a 2-character alpha code.</p> | Service Provider / Construction Contractor |
| Discipline / Group | DISCIPLINE / GROUP is a controlled attribute and is selected from the criteria for the respective discipline in the Data Classification Work Instruction. | Service Provider / Construction Contractor |
| EGI | <p>EGI groups items of similar operating and maintenance characteristics.</p> <p>EGI is a controlled attribute containing a 6-character alpha or numeric code and is selected from the criteria for the respective discipline in the Data Classification Work Instruction.</p> | Service Provider / Construction Contractor |
| Basecode | <p>The BASECODE is defined by a 5-character numeric code and denotes a continuous length of single-track spanning between two physical nodes or points.</p> <p>The BASECODE is a controlled attribute and is available on request to ARTC.</p> | Service Provider / Construction Contractor |

| Title | Description | Completed by |
|-------------------------|---|--|
| | <p>The BASECODE is populated in the "Basecode" column in the Asset List.</p> <p>If the BASECODE is not available, NEW is to be populated in the "Basecode" column.</p> | |
| | Where NEW is populated, ARTC will issue a BASECODE. | ARTC Asset Management System Support Officer |
| Equipment Status | <p>The EQUIPMENT STATUS is used (in conjunction with other asset information such as EQUIPMENT CLASS and EGI) to determine the appropriate inspection schedule for an asset.</p> <p>The status of the asset is to be identified using one of the following controlled value attributes, selected for the respective discipline from the Data Classification Work Instruction:</p> <ul style="list-style-type: none"> PROJECT NEW (PN) IN SERVICE (IS) SERVICE WITHDRAWN (SW) DISPOSED OF (DI) GROUP MAINTAINED (GM) BOOKED OUT OF SERVICE (BO) BOOKED OUT OF SERVICE (MAINTAIN) (BM) INTERFACING ASSETS (IA). | |
| | <p>PROJECT NEW (PN): Applies for new assets that have no previous equipment history in Ellipse and new asset data is required to be populated.</p> <p>PROJECT NEW applies to equipment planned or under construction, not yet in service and poses no risk to train operations or safety to any other business process or operation.</p> <p>For new assets, PROJECT NEW should be populated in the "Equipment Status" column.</p> | Service Provider / Construction Contractor |
| | <p>IN SERVICE (IS): Is where an existing asset is being used and maintained by ARTC.</p> <p>IN SERVICE applies to equipment providing full or limited service to train operations or other business processes or operations.</p> | |

| Title | Description | Completed by |
|-------|--|--------------|
| | <p>SERVICE WITHDRAWN (SW): Is where an asset has been withdrawn from service and does not require maintenance.</p> <p>For equipment to be SERVICE WITHDRAWN, no part of the service the equipment provides supports full or limited train operations or other business processes or operations. However, there may still be a safety risk to rail operations or the public that requires inspections and related maintenance activities of the equipment.</p> | |
| | <p>DISPOSED OF (DI): Is where an asset has been completely removed and all asset data is transferred to the disposed state in Ellipse.</p> <p>In some cases, there may be new assets / equipment to replace the removed equipment (for example: like for like equipment). This is to ensure old maintenance history does not carry over to the new or replaced equipment.</p> <p>All existing asset information should be preserved.</p> | |
| | <p>GROUP MAINTAINED (GM): Is where assets / equipment service schedule is grouped in with other common equipment components.</p> <p>GROUP MAINTAINED applies to assets / equipment providing full or limited service to train operations.</p> | |
| | <p>BOOKED OUT OF SERVICE (BO): Is where equipment is temporarily booked out for replacement or maintenance.</p> <p>BOOKED OUT OF SERVICE applies where no part of the service the asset / equipment provides supports full or limited train operations or other business processes or operations.</p> | |
| | <p>BOOKED OUT OF SERVICE (MAINTAIN) (BM): Applies where no part of the service the asset / equipment provides supports full or limited train operations or other business processes or operations. However, there is still a safety risk to rail operations or the public that requires inspections and related maintenance activities.</p> | |
| | <p>INTERFACING ASSETS (IA): Are non-ARTC maintained assets. While not maintained by ARTC, ARTC still needs to know about the</p> | |

| Title | Description | Completed by |
|--|---|---|
| | asset health and any other aspects that has potential to impact on our business objectives. Safety Interface Agreements, licences and other agreements provide the conduit for managing the asset interface. | |
| Km from | <p>The origin point is at the up end of the asset, which is also known as the “Discrete Km”, as described for the respective discipline from the Data Classifications Work Instruction.</p> <p>It consists of a double precision number of a 7-digit code and is to be captured to the nearest kilometre, with 3 decimal places (to the nearest metre), for example 1646.265km or 0754.236km.</p> | Service Provider / Construction Contractor |
| Km to | <p>The end point is at the down end of the asset.</p> <p>It consists of a double precision number of a 7-digit code and is to be captured to the nearest kilometre, with 3 decimal places (to the nearest metre).</p> | Service Provider / Construction Contractor |
| Function | <p>Is a controlled attributed as described for the respective discipline from the Data Classification Work Instruction.</p> <p>The Service Provider shall populate where possible, with advice from the ARTC Representative if required.</p> | Service Provider / Construction Contractor |
| Equipment Description | <p>The EQUIPMENT DESCRIPTION field is an uncontrolled attribute that includes information to describe the asset.</p> <p>The field allows a maximum of 40 characteristics.</p> <p>Refer to the relevant Data Classification Work Instruction for the EQUIPMENT DESCRIPTION for each discipline and a list of data rules relating to Equipment Descriptions.</p> | Service Provider / Construction Contractor |
| Equipment Description Any Unique Identifier | <p>This field is an uncontrolled attribute that includes information to describe ANY UNIQUE IDENTIFIERS or additional descriptors that further define the asset.</p> <p>The field allows for no more than 40 characteristics.</p> <p>A UNIQUE IDENTIFIER may include a number (such as a point motor number at a turnout) or a local name (such as a location or geographical</p> | Service Provider / Construction Contractor |

| Title | Description | Completed by |
|-------------------------------|--|---|
| | feature characterised by local residents or the community). | |
| Latitude and Longitude | Latitude and Longitude Start – same as Up End. Latitude and Longitude End – same as Down End. These is an uncontrolled attribute where the LATITUDE AND LONGITUDE is to be populated in degrees to 9 decimal places. | Service Provider / Construction Contractor |
| ARTC owned | Items need to be identified as ARTC OWNED. This is a controlled attribute with YES or NO to be selected from the drop-down box. | Service Provider / Construction Contractor |
| ARTC maintained | Items need to be identified as ARTC MAINTAINED assets. This is a controlled attribute with YES or NO to be selected from the drop-down box. | Service Provider / Construction Contractor |
| Shared Asset | An asset identified as SHARED or a JOINT ASSET owned with another rail infrastructure owner or operator. This is a controlled attribute with YES or NO to be selected from the drop-down box. | Service Provider / Construction Contractor |
| SPN | Also known as Plant Number or SPN (Structured Plant Number). ARTC shall issue a SPN where PROJECT NEW and EXISTING EQUIPMENT NOT IN ELLIPSE are identified. | Configuration Business Analyst, Assets |

It is not acceptable to vary or alter the “fields” in the Asset List Template, including the worksheet tabs. To do so will render the ability to upload the data back into Ellipse.

2.3 Step 3 – Asset List Quality Check by ARTC Representative – Stage 4 (Detailed Design) and Stage 5 (Project Construction)

Following the population of the Asset List by the Service Provider and / or Construction Contractor, it is checked by the ARTC Representative when submitted at the end of Detailed Design (Stage 4) and Project Construction (Stage 5). The quality check shall ensure information provided by the Service Provider / Construction Contractor is accurate and consistent with the design and construction deliverables.

The populated Asset List shall be transmitted from the Service Provider / Construction Contractor to the ARTC Representative via ACONEX.

2.4 **Step 4 – Asset List Quality Check and Acceptance by ARTC – Stage 4 (Detailed Design) and Stage 5 (Project Construction)**

Following the Asset List quality check by the ARTC Representative (Step 3), the ARTC Representative shall forward the Asset List to the Configuration Business Analyst, Assets for validation and acceptance via ACONEX.

Once the Asset List has been accepted by the Configuration Business Analyst, Assets it shall be returned to the relevant ARTC Representative for creation of the Nameplates by the Service Provider.

2.5 **Step 5 – Creation of Nameplates – Stage 4 (Detailed Design) and Stage 5 (Project Construction)**

Nameplate Templates are managed by ARTC to capture any changes to the technical configuration of the asset for creating or updating a Nameplate. Nameplate Templates can be found on the ARTC Enterprise Asset Management SharePoint Site. This SharePoint Site is available to ARTC Personnel only.

Following the completion of the Asset List, Nameplates shall be either updated or created with the information provided in the Asset List and data from the design using the ARTC Nameplate Template.

The Service Provider is responsible for updating or creating a Nameplate for each asset. Nameplates for track and civil assets shall be updated or created in accordance with the *ARTC Track and Civil Nameplates Work Instruction (EGW-10-17)*.

Nameplates shall be provided between the Detailed Design (Stage 4) and Commissioning (Stage 5) stages as the required final asset data is captured.

The completed Nameplates must be delivered by the Service Provider not more than 10 business days post commissioning.

The EGI's listed in the Asset List are to be used for identifying Nameplates.

Nameplate Templates are not to be reused on other Project Works as the technical configuration of the installed asset could have changed.

The completed Nameplate shall be provided by the Service Provider to the ARTC Representative via ACONEX.

The Nameplate submitted by the Service Provider shall be checked by the ARTC Representative to ensure information provided by the Service Provider is accurate and consistent with the design and construction deliverables.

For Projects being delivered in separable portions or stages, the ARTC Representative shall develop Nameplates for all the assets listed in each separable portion or stage, prior to commissioning.

The following reference documents provide information and guidance for the updating and creating of Nameplates:

- *Data Classification Work Instruction – Universal (EGW-10-02)*
- *Data Classification Work Instruction – Structures (EGW-10-01)*
- *Data Classification Work Instruction - Track and Civil (EGW-10-04)*
- *Data Classification Work Instruction - Track and Civil Nameplates (EGW-10-17)*

- *Data Classification Work Instruction - Signal Systems (EGW-10-03).*

2.6 Step 6 – Review and Acceptance – Stage 4 (Detailed Design) and Stage 5 (Project Construction)

Following creation of the Asset List and Nameplates, the ARTC Representative shall forward the completed Asset List and Nameplates to the Configuration Business Analyst, Assets for acceptance.

The accepted Asset List and Nameplates shall be distributed to the relevant ARTC personnel for checking and acceptance in accordance with the *Equipment Register – Updating and Maintenance Procedure (EGP-03-02)*.

2.7 Step 7 - Change Authorisation Form – Stage 4 (Detailed Design)

In accordance with the *Equipment Register – Updating and Maintenance Procedure (EGP-03-02)*, the Configuration Business Analyst, Assets shall complete the *Authorised Equipment Register / MST Change Authorisation Form (EGP-03-02 F-01)*.

The completed Change Authorisation Form is sent to the Area Manager, Signal Maintenance Engineer and Structures Manager, or their approved delegates for approval.

Once approved the Area Manager, Signal Maintenance Engineer and Structures Manager will forward the Change Authorisation Form to the Configuration Business Analyst, Assets for checking and uploading into Ellipse by the Asset Management System Support Officer (ASSO).

2.8 Step 8 – Uploading into Ellipse – Stage 4 (Detailed Design)

On receipt of the *Change Authorisation Form (EGP-03-02 F-01)* and the completed Asset List and Nameplates, the Asset Management System Support Officer (ASSO) checks and uploads the data and information into Ellipse.

2.9 Step 9 – Update Asset List and Nameplates during Construction and Commissioning – Stage 5 (Project Construction)

In Stage 5, the ARTC Representative shall arrange for the Construction Contractor to update the Asset List and Nameplates with the as-constructed information where required.

The ARTC Representative shall perform sufficient checks to ensure the Asset List and Nameplates are completed before sending to the Configuration Business Analyst, Assets for checking.

Once checked, the Configuration Business Analyst, Assets shall forward the Asset List and Nameplates to the Area Manager for final acceptance.

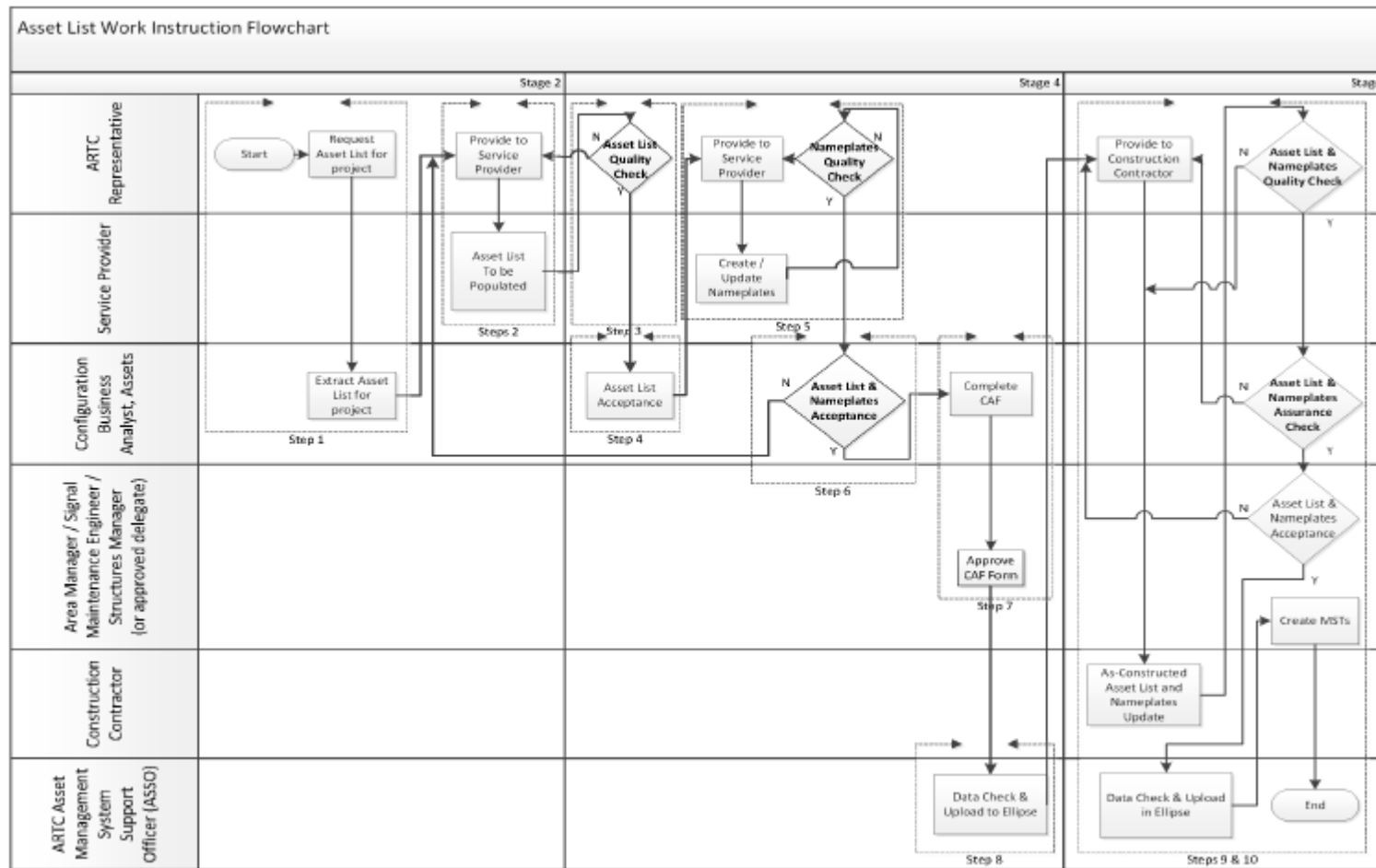
The Area Manager shall then arrange with the Configuration Business Analyst, Assets for updates to be completed in Ellipse by the Asset Management System Support Officer (ASSO) to coincide with the commissioning.

2.10 Step 10 – MST Creation - Stage 5 (Project Construction)

In accordance with the *Equipment Register – Updating and Maintenance Procedure (EGP-03-02)*, the Area Manager, Signal Maintenance Engineer and Structures Manager, or their approved delegates, shall arrange for the Equipment MST's to be created in Ellipse to coincide with the commissioning.

3 Appendices

3.1 Appendix A – Asset List Work Instruction Workflow



Appendix B – CREATE Asset List Template (continued)

[illegible]

3.3 Appendix B1 – CREATE Asset List Example – Track and Civil

[illegible]

Appendix B1 – CREATE Asset List Example – Track and Civil (continued)

[illegible]

3.4 Appendix B2 – CREATE Asset List Example – Structures

[illegible]

Appendix B2 – CREATE Asset List Example – Structures (continued)

[illegible]

3.5 Appendix B3 – CREATE Asset List Example – Signalling

[illegible]

Appendix B3 – CREATE Asset List Example – Signalling (continued)

[illegible]

Appendix C – REMOVED Asset List Example (continued)

| Asset Segn | Cost Segn | Segment L | Segment U | Associated | Productive | Equipment | Equipment | Equipment | Equipment | Equipment | Account C | Account C | Active | Equipment | Equipment | Expense E | Equipment | Equipment | Equipment | Equipment | Condition | Condition | Condition | Last Cond | Disposal D | Equip No | Include M | Custodian | Custodian | Plant Code | Plant Code | Plant Code | Plant Code | Plant Code |
|------------|-----------|-----------|-----------|------------|------------|-----------|-----------|-----------|-----------|-----------|-----------|-----------|--------|-----------|-----------|-----------|-----------|-----------|-----------|-----------|-----------|-----------|-----------|-----------|------------|----------|-----------|-----------|-----------|------------|------------|------------|------------|------------|
| 0.01 | 00000000 | KMTR | | false | N | EQUIPMEN | NANGL | Nana Glen | | | 0323 | | Y | | | | | | | | 0.00 | | | | | | true | | | N51 | | 10006 | | 0650.126 |
| 0.01 | 00000000 | KMTR | | false | N | SIGNALLN | NANGL | Nana Glen | | | 0323 | | Y | | | | | | | | 0.00 | | | | | | true | | | N51 | | 10006 | | 0650.126 |
| 0.01 | 00000000 | KMTR | | false | N | 0650.133 | NANGL | Nana Glen | | | 0323 | | Y | | | | | | | | 0.00 | | | | | | true | | | N51 | | 10006 | | 0650.133 |
| 0.01 | 00000000 | KMTR | | false | N | 0650.350 | NANGL | Nana Glen | | | 0323 | | Y | | | | | | | | 0.00 | | | | | | true | | | N51 | | 10006 | | 0650.350 |
| 0.01 | 00000000 | KMTR | | false | N | 0650.707 | NANGL | Nana Glen | | | 0323 | | Y | | | | | | | | 0.00 | | | | | | true | | | N51 | | 10006 | | 0650.707 |
| 0.01 | 00000000 | KMTR | | false | N | EQUIPMEN | NANGL | Nana Glen | | | 0323 | | Y | | | | | | | | 0.00 | | | | | | true | | | N51 | | 10006 | | 0650.753 |
| 0.01 | 00000000 | KMTR | | false | N | TRAIN DET | NANGL | Nana Glen | | | 0323 | | Y | | | | | | | | 0.00 | | | | | | true | | | N51 | | 10006 | | 0650.753 |
| 0.01 | 00000000 | KMTR | | false | N | SIGNAL LN | NANGL | Nana Glen | | | 0323 | | Y | | | | | | | | 0.00 | | | | | | true | | | N51 | | 10006 | | 0650.753 |
| 0.01 | 00000000 | KMTR | | false | N | SGN | NANGL | Nana Glen | | | 0323 | | Y | | | | | | | | 0.00 | | | | | | true | | | N51 | | 10006 | | 0650.753 |
| 0.01 | 00000000 | KMTR | | false | N | SIGNALLN | NANGL | Nana Glen | | | 0323 | | Y | | | | | | | | 0.00 | | | | | | true | | | N51 | | 10006 | | 0650.753 |
| 0.01 | 00000000 | KMTR | | false | Y | COMMS T | NANGL | Nana Glen | | | 0323 | | Y | | | | | | | | 0.00 | | | | | | true | | | N51 | | 10006 | | 0651.000 |
| 0.01 | 00000000 | KMTR | | false | N | 0651.114 | NANGL | Nana Glen | | | 0323 | | Y | | | | | | | | 0.00 | | | | | | true | | | N51 | | 10006 | | 0651.114 |
| 0.01 | 00000000 | KMTR | | false | N | EQUIPMEN | NANGL | Nana Glen | | | 0323 | | Y | | | | | | | | 0.00 | | | | | | true | | | N51 | | 10006 | | 0651.175 |
| 0.01 | 00000000 | KMTR | | false | N | SIGNALLN | NANGL | Nana Glen | | | 0323 | | Y | | | | | | | | 0.00 | | | | | | true | | | N51 | | 10006 | | 0651.175 |
| 0.01 | 00000000 | KMTR | | false | N | TRAIN DET | NANGL | Nana Glen | | | 0323 | | Y | | | | | | | | 0.00 | | | | | | true | | | N51 | | 10006 | | 0651.449 |
| 0.01 | 00000000 | KMTR | | false | N | EQUIPMEN | NANGL | Nana Glen | | | 0323 | | Y | | | | | | | | 0.00 | | | | | | true | | | N51 | | 10006 | | 0651.449 |
| 0.01 | 00000000 | KMTR | | false | N | TRAIN DET | NANGL | Nana Glen | | | 0323 | | Y | | | | | | | | 0.00 | | | | | | true | | | N51 | | 10006 | | 0651.449 |
| 0.01 | 00000000 | KMTR | | false | N | SIGNAL LN | NANGL | Nana Glen | | | 0323 | | Y | | | | | | | | 0.00 | | | | | | true | | | N51 | | 10006 | | 0651.449 |
| 0.01 | 00000000 | KMTR | | false | N | TRAIN DET | NANGL | Nana Glen | | | 0323 | | Y | | | | | | | | 0.00 | | | | | | true | | | N51 | | 10006 | | 0651.449 |
| 0.01 | 00000000 | KMTR | | false | N | SIGNALLN | NANGL | Nana Glen | | | 0323 | | Y | | | | | | | | 0.00 | | | | | | true | | | N51 | | 10006 | | 0651.449 |
| 0.01 | 00000000 | KMTR | | false | N | 0651.519 | NANGL | Nana Glen | | | 0323 | | Y | | | | | | | | 0.00 | | | | | | true | | | N51 | | 10006 | | 0651.519 |
| 0.01 | 00000000 | KMTR | | false | Y | 0651.603 | NANGL | Nana Glen | PUB | PUB | 0323 | | Y | | | | | | | | 0.00 | | | | | | true | | | N51 | | 10006 | | 0651.603 |
| 0.01 | 00000000 | KMTR | | false | N | EQUIPMEN | NANGL | Nana Glen | | | 0323 | | Y | | | | | | | | 0.00 | | | | | | true | | | N51 | | 10006 | | 0651.606 |
| 0.01 | 00000000 | KMTR | | false | N | POWER SU | NANGL | Nana Glen | | | 0323 | | Y | | | | | | | | 0.00 | | | | | | true | | | N51 | | 10006 | | 0651.606 |
| 0.01 | 00000000 | KMTR | | false | N | MON IX-5 | NANGL | Nana Glen | | | 0323 | | Y | | | | | | | | 0.00 | | | | | | true | | | N51 | | 10006 | | 0651.603 |
| 0.01 | 00000000 | KMTR | | false | N | POWER SU | NANGL | Nana Glen | | | 0323 | | Y | | | | | | | | 0.00 | | | | | | true | | | N51 | | 10006 | | 0651.603 |
| 0.01 | 00000000 | KMTR | | false | N | SIGNALLN | NANGL | Nana Glen | | | 0323 | | Y | | | | | | | | 0.00 | | | | | | true | | | N51 | | 10006 | | 0651.606 |
| 0.01 | 00000000 | KMTR | | false | N | 0651.620 | GUN | Glenreagh | | | 0323 | | Y | | | | | | | | 0.00 | | | | | | true | | | N51 | | 10006 | | 0651.620 |
| 0.01 | 00000000 | KMTR | | false | N | TRAIN DET | NANGL | Nana Glen | | | 0323 | | Y | | | | | | | | 0.00 | | | | | | true | | | N51 | | 10006 | | 0651.626 |
| 0.01 | 00000000 | KMTR | | false | N | TRAIN DET | NANGL | Nana Glen | | | 0323 | | Y | | | | | | | | 0.00 | | | | | | true | | | N51 | | 10006 | | 0651.626 |
| 0.01 | 00000000 | KMTR | | false | N | EQUIPMEN | GUN | Glenreagh | | | 0323 | | Y | | | | | | | | 0.00 | | | | | | true | | | N51 | | 10006 | | 0651.678 |
| 0.01 | 00000000 | KMTR | | false | N | TRAIN DET | GUN | Glenreagh | | | 0323 | | Y | | | | | | | | 0.00 | | | | | | true | | | N51 | | 10006 | | 0651.678 |
| 0.01 | 00000000 | KMTR | | false | N | TRAIN DET | GUN | Glenreagh | | | 0323 | | Y | | | | | | | | 0.00 | | | | | | true | | | N51 | | 10006 | | 0651.678 |
| 0.01 | 00000000 | KMTR | | false | N | SIGNAL LN | GUN | Glenreagh | | | 0323 | | Y | | | | | | | | 0.00 | | | | | | true | | | N51 | | 10006 | | 0651.678 |
| 0.01 | 00000000 | KMTR | | false | N | SIGNAL LN | GUN | Glenreagh | | | 0323 | | Y | | | | | | | | 0.00 | | | | | | true | | | N51 | | 10006 | | 0651.678 |
| 0.01 | 00000000 | KMTR | | false | N | HAUF PLO | GUN | Glenreagh | | | 0323 | | Y | | | | | | | | 0.00 | | | | | | true | | | N51 | | 10006 | | 0651.970 |
| 0.01 | 00000000 | KMTR | | false | N | POINTS KA | GUN | Glenreagh | | | 0323 | | Y | | | | | | | | 0.00 | | | | | | true | | | N51 | | 10006 | | 0651.678 |
| 0.01 | 00000000 | KMTR | | false | N | TRAIN DET | GUN | Glenreagh | | | 0323 | | Y | | | | | | | | 0.00 | | | | | | true | | | N51 | | 10006 | | 0651.678 |
| 0.01 | 00000000 | KMTR | | false | N | POWER SU | GUN | Glenreagh | | | 0323 | | Y | | | | | | | | 0.00 | | | | | | true | | | N51 | | 10006 | | 0651.678 |
| 0.01 | 00000000 | KMTR | | false | N | EQUIPMEN | GUN | Glenreagh | | | 0323 | | Y | | | | | | | | 0.00 | | | | | | true | | | N51 | | 10006 | | 0651.678 |
| 0.01 | 00000000 | KMTR | | false | N | 651.677 | GUN | Glenreagh | | | 0323 | | Y | | | | | | | | 0.00 | | | | | | true | | | N51 | | 10006 | | 0651.677 |
| 0.01 | 00000000 | KMTR | | false | N | SIGNALLN | GUN | Glenreagh | | | 0323 | | Y | | | | | | | | 0.00 | | | | | | true | | | N51 | | 10006 | | 0651.678 |
| 0.01 | 00000000 | KMTR | | false | N | SIGNALLN | GUN | Glenreagh | | | 0323 | | Y | | | | | | | | 0.00 | | | | | | true | | | N51 | | 10006 | | 0651.678 |
| 0.01 | 00000000 | KMTR | | false | N | WS WEAT | GUN | Glenreagh | | | 0323 | | Y | | | | | | | | 0.00 | | | | | | true | | | N51 | | 10006 | | 0651.780 |
| 0.01 | 00000000 | KMTR | | false | N | EQUIPMEN | GUN | Glenreagh | | | 0323 | | Y | | | | | | | | 0.00 | | | | | | true | | | N51 | | 10006 | | 0651.812 |
| 0.01 | 00000000 | KMTR | | false | N | POWER SU | GUN | Glenreagh | | | 0323 | | Y | | | | | | | | 0.00 | | | | | | true | | | N51 | | 10006 | | 0651.812 |
| 0.01 | 00000000 | KMTR | | false | N | POWER SU | GUN | Glenreagh | | | 0323 | | Y | | | | | | | | 0.00 | | | | | | true | | | N51 | | 10006 | | 0651.812 |
| 0.01 | 00000000 | KMTR | | false | N | TELEMETR | GUN | Glenreagh | | | 0323 | | Y | | | | | | | | 0.00 | | | | | | true | | | N51 | | 10006 | | 0651.810 |
| 0.01 | 00000000 | KMTR | | false | N | EQUIPMEN | GUN | Glenreagh | | | 0323 | | Y | | | | | | | | 0.00 | | | | | | true | | | N51 | | 10006 | | 0651.812 |
| 0.01 | 00000000 | KMTR | | false | N | EQUIPMEN | GUN | Glenreagh | | | 0323 | | Y | | | | | | | | 0.00 | | | | | | true | | | N51 | | 10006 | | 0651.812 |
| 0.01 | 00000000 | KMTR | | false | N | POWER SU | GUN | Glenreagh | | | 0323 | | Y | | | | | | | | 0.00 | | | | | | true | | | N51 | | 10006 | | 0651.812 |
| 0.01 | 00000000 | KMTR | | false | N | POWER SU | GUN | Glenreagh | | | 0323 | | Y | | | | | | | | 0.00 | | | | | | true | | | N51 | | 10006 | | 0651.812 |
| 0.01 | 00000000 | KMTR | | false | N | TELEMETR | GUN | Glenreagh | | | 0323 | | Y | | | | | | | | 0.00 | | | | | | true | | | N51 | | 10006 | | 0651.810 |
| 0.01 | 00000000 | KMTR | | false | N | SIGNALLN | GUN | Glenreagh | | | 0323 | | Y | | | | | | | | 0.00 | | | | | | true | | | N51 | | 10006 | | 0651.812 |
| 0.01 | 00000000 | KMTR | | false | N | SIGNALLN | GUN | Glenreagh | | | 0323 | | Y | | | | | | | | 0.00 | | | | | | true | | | N51 | | 10006 | | 0651.812 |
| 0.01 | 00000000 | KMTR | | false | N | GUN | Glenreagh | | | | 0323 | | Y | | | | | | | | 0.00 | | | | | | true | | | N51 | | 10006 | | 0651.815 |
| 0.01 | 00000000 | KMTR | | false | N | GUN | Glenreagh | | | | 0323 | | Y | | | | | | | | 0.00 | | | | | | true | | | N51 | | 10006 | | 0651.815 |
| 0.01 | 00000000 | KMTR | | false | N | 0651.980 | GUN | Glenreagh | | | 0323 | | Y | | | | | | | | 0.00 | | | | | | true | | | N51 | | 10006 | | 0651.980 |
| 0.01 | 00000000 | KMTR | | | | | | | | | | | | | | | | | | | | | | | | | | | | | | | | |

Appendix C – REMOVED Asset List Example (continued)

| Plant Code | Plant Code | Plant Code | Plant Code | Plant Code | Plant Code | Plant Code | Plant Code | Manager | Manager | State | State Desc | Network | Network D | ARTC Own | ARTC Own | Corridor | Corridor D | ARTC Maint | ARTC Maint | Line Segments | Line Segments | Shared Assets | Shared Assets | Manager | Manager | Cost Recor | Cost Recor | Provision | Provision | Equipment | Equipment | Equipment | Equipment | Equipment | Equipment | Equipment | Equipment | Equipment |
|------------|------------|------------|------------|------------|------------|------------|------------|---------|---------|-------|------------|---------|-----------|----------|----------|----------|-------------|------------|------------|---------------|---------------|---------------|---------------|---------|---------|------------|------------|-----------|-----------|-----------|-----------|-----------|-----------|-----------|-----------|-----------|-----------|-----------|
| EN | | GH1 | | | | | | | | NS | 3G | | | Y | Yes | NE | N51 - North | Y | Yes | CC | 2021 KureN | N | No | SE | | N | | CC | | | | | | | | | | |
| LB | | GH1 | | | | | | | | NS | 3G | | | Y | Yes | NE | N51 - North | Y | Yes | CC | 2021 KureN | N | No | SE | | N | | CC | | | | | | | | | | |
| SC | | | | | | | | | | NS | 3G | | | Y | Yes | NE | N51 - North | Y | Yes | CC | 2021 KureN | N | No | SE | | N | | CC | | | | | | | | | | |
| SC | | | | | | | | | | NS | 3G | | | Y | Yes | NE | N51 - North | Y | Yes | CC | 2021 KureN | N | No | SE | | N | | CC | | | | | | | | | | |
| EN | | GH2 | | | | | | | | NS | 3G | | | Y | Yes | NE | N51 - North | Y | Yes | CC | 2021 KureN | N | No | SE | | N | | CC | | | | | | | | | | |
| TD | | DXT | | | | | | | | NS | 3G | | | Y | Yes | NE | N51 - North | Y | Yes | CC | 2021 KureN | N | No | SE | | N | | CC | | | | | | | | | | |
| SG | | 3M DXT | | | | | | | | NS | 3G | | | Y | Yes | NE | N51 - North | Y | Yes | CC | 2021 KureN | N | No | SE | | N | | CC | | | | | | | | | | |
| SG | | GH2 | | | | | | | | NS | 3G | | | Y | Yes | NE | N51 - North | Y | Yes | CC | 2021 KureN | N | No | SE | | N | | CC | | | | | | | | | | |
| LB | | GH2 | | | | | | | | NS | 3G | | | Y | Yes | NE | N51 - North | Y | Yes | CC | 2021 KureN | N | No | SE | | N | | CC | | | | | | | | | | |
| LA | | | | | | | | | | NS | 3G | | | Y | Yes | NE | N51 - North | Y | Yes | CC | 2021 KureN | N | No | SE | | N | | CC | | | | | | | | | | |
| SC | | | | | | | | | | NS | 3G | | | Y | Yes | NE | N51 - North | Y | Yes | CC | 2021 KureN | N | No | SE | | N | | CC | | | | | | | | | | |
| EN | | GH3 | | | | | | | | NS | 3G | | | Y | Yes | NE | N51 - North | Y | Yes | CC | 2021 KureN | N | No | SE | | N | | CC | | | | | | | | | | |
| LB | | GH3 | | | | | | | | NS | 3G | | | Y | Yes | NE | N51 - North | Y | Yes | CC | 2021 KureN | N | No | SE | | N | | CC | | | | | | | | | | |
| TD | | DAT | | | | | | | | NS | 3G | | | Y | Yes | NE | N51 - North | Y | Yes | CC | 2021 KureN | N | No | SE | | N | | CC | | | | | | | | | | |
| EN | | GH4 | | | | | | | | NS | 3G | | | Y | Yes | NE | N51 - North | Y | Yes | CC | 2021 KureN | N | No | SE | | N | | CC | | | | | | | | | | |
| TD | | DXT | | | | | | | | NS | 3G | | | Y | Yes | NE | N51 - North | Y | Yes | CC | 2021 KureN | N | No | SE | | N | | CC | | | | | | | | | | |
| SG | | 3M | | | | | | | | NS | 3G | | | Y | Yes | NE | N51 - North | Y | Yes | CC | 2021 KureN | N | No | SE | | N | | CC | | | | | | | | | | |
| TD | | 3XAT | | | | | | | | NS | 3G | | | Y | Yes | NE | N51 - North | Y | Yes | CC | 2021 KureN | N | No | SE | | N | | CC | | | | | | | | | | |
| LB | | GH4 | | | | | | | | NS | 3G | | | Y | Yes | NE | N51 - North | Y | Yes | CC | 2021 KureN | N | No | SE | | N | | CC | | | | | | | | | | |
| LC | | | | | | | | | | NS | 3G | | | Y | Yes | NE | N51 - North | Y | Yes | CC | 2021 KureN | N | No | SE | | N | | CC | | | | | | | | | | |
| NS | | 3XGL | | | | | | | | NS | 3G | | | Y | Yes | NE | N51 - North | Y | Yes | CC | 2021 KureN | N | No | SE | | N | | CC | | | | | | | | | | |
| EN | | UXNG | | | | | | | | NS | 3G | | | Y | Yes | NE | N51 - North | Y | Yes | CC | 2021 KureN | N | No | SE | | N | | CC | | | | | | | | | | |
| PO | | UXNG_DC | | | | | | | | NS | 3G | | | Y | Yes | NE | N51 - North | Y | Yes | CC | 2021 KureN | N | No | SE | | N | | CC | | | | | | | | | | |
| UX | | 3HERWOOD | | | | | | | | NS | 3G | | | Y | Yes | NE | N51 - North | Y | Yes | CC | 2021 KureN | N | No | SE | | N | | CC | | | | | | | | | | |
| PO | | LX_12V_PS | | | | | | | | NS | 3G | | | Y | Yes | NE | N51 - North | Y | Yes | CC | 2021 KureN | N | No | SE | | N | | CC | | | | | | | | | | |
| LB | | UXNG | | | | | | | | NS | 3G | | | Y | Yes | NE | N51 - North | Y | Yes | CC | 2021 KureN | N | No | SE | | N | | CC | | | | | | | | | | |
| TD | | 3XGL | | | | | | | | NS | 3G | | | Y | Yes | NE | N51 - North | Y | Yes | CC | 2021 KureN | N | No | SE | | N | | CC | | | | | | | | | | |
| TD | | 3XAT | | | | | | | | NS | 3G | | | Y | Yes | NE | N51 - North | Y | Yes | CC | 2021 KureN | N | No | SE | | N | | CC | | | | | | | | | | |
| TD | | 3XAT | | | | | | | | NS | 3G | | | Y | Yes | NE | N51 - North | Y | Yes | CC | 2021 KureN | N | No | SE | | N | | CC | | | | | | | | | | |
| EN | | GH5A-B | | | | | | | | NS | 3G | | | Y | Yes | NE | N51 - North | Y | Yes | CC | 2021 KureN | N | No | SE | | N | | CC | | | | | | | | | | |
| TD | | 3BT | | | | | | | | NS | 3G | | | Y | Yes | NE | N51 - North | Y | Yes | CC | 2021 KureN | N | No | SE | | N | | CC | | | | | | | | | | |
| TD | | 3BT | | | | | | | | NS | 3G | | | Y | Yes | NE | N51 - North | Y | Yes | CC | 2021 KureN | N | No | SE | | N | | CC | | | | | | | | | | |
| TD | | 4DT | | | | | | | | NS | 3G | | | Y | Yes | NE | N51 - North | Y | Yes | CC | 2021 KureN | N | No | SE | | N | | CC | | | | | | | | | | |
| SG | | 12M | | | | | | | | NS | 3G | | | Y | Yes | NE | N51 - North | Y | Yes | CC | 2021 KureN | N | No | SE | | N | | CC | | | | | | | | | | |
| SG | | 12L | | | | | | | | NS | 3G | | | Y | Yes | NE | N51 - North | Y | Yes | CC | 2021 KureN | N | No | SE | | N | | CC | | | | | | | | | | |
| IN | | HPS12L | | | | | | | | NS | 3G | | | Y | Yes | NE | N51 - North | Y | Yes | CC | 2021 KureN | N | No | SE | | N | | CC | | | | | | | | | | |
| PT | | 51 | | | | | | | | NS | 3G | | | Y | Yes | NE | N51 - North | Y | Yes | CC | 2021 KureN | N | No | SE | | N | | CC | | | | | | | | | | |
| TD | | 3CT | | | | | | | | NS | 3G | | | Y | Yes | NE | N51 - North | Y | Yes | CC | 2021 KureN | N | No | SE | | N | | CC | | | | | | | | | | |
| PO | | GH5A-B_1 | | | | | | | | NS | 3G | | | Y | Yes | NE | N51 - North | Y | Yes | CC | 2021 KureN | N | No | SE | | N | | CC | | | | | | | | | | |
| EN | | GH5A-B_H5 | | | | | | | | NS | 3G | | | Y | Yes | NE | N51 - North | Y | Yes | CC | 2021 KureN | N | No | SE | | N | | CC | | | | | | | | | | |
| GY | | | | | | | | | | NS | 3G | | | Y | Yes | NE | N51 - North | Y | Yes | CC | 2021 KureN | N | No | SE | | N | | CC | | | | | | | | | | |
| LB | | GH5A-B | | | | | | | | NS | 3G | | | Y | Yes | NE | N51 - North | Y | Yes | CC | 2021 KureN | N | No | SE | | N | | CC | | | | | | | | | | |
| LB | | GH5A-BH5 | | | | | | | | NS | 3G | | | Y | Yes | NE | N51 - North | Y | Yes | CC | 2021 KureN | N | No | SE | | N | | CC | | | | | | | | | | |
| MS | | GH5A-B | | | | | | | | NS | 3G | | | Y | Yes | NE | N51 - North | Y | Yes | CC | 2021 KureN | N | No | SE | | N | | CC | | | | | | | | | | |
| EN | | GH6R | | | | | | | | NS | 3G | | | Y | Yes | NE | N51 - North | Y | Yes | CC | 2021 KureN | N | No | SE | | N | | CC | | | | | | | | | | |
| PO | | GH6RR_EN | | | | | | | | NS | 3G | | | Y | Yes | NE | N51 - North | Y | Yes | CC | 2021 KureN | N | No | SE | | N | | CC | | | | | | | | | | |
| TM | | GH6_RR_E | | | | | | | | NS | 3G | | | Y | Yes | NE | N51 - North | Y | Yes | CC | 2021 KureN | N | No | SE | | N | | CC | | | | | | | | | | |
| EN | | GH6_PWR | | | | | | | | NS | 3G | | | Y | Yes | NE | N51 - North | Y | Yes | CC | 2021 KureN | N | No | SE | | N | | CC | | | | | | | | | | |
| EN | | GH6 | | | | | | | | NS | 3G | | | Y | Yes | NE | N51 - North | Y | Yes | CC | 2021 KureN | N | No | SE | | N | | CC | | | | | | | | | | |
| PO | | GH6RR_NC | | | | | | | | NS | 3G | | | Y | Yes | NE | N51 - North | Y | Yes | CC | 2021 KureN | N | No | SE | | N | | CC | | | | | | | | | | |
| PO | | GH6RR_DC | | | | | | | | NS | 3G | | | Y | Yes | NE | N51 - North | Y | Yes | CC | 2021 KureN | N | No | SE | | N | | CC | | | | | | | | | | |
| TM | | GLN_GH6 | | | | | | | | NS | 3G | | | Y | Yes | NE | N51 - North | Y | Yes | CC | 2021 KureN | N | No | SE | | N | | CC | | | | | | | | | | |
| LB | | ENG6RR | | | | | | | | NS | 3G | | | Y | Yes | NE | N51 - North | Y | Yes | CC | 2021 KureN | N | No | SE | | N | | CC | | | | | | | | | | |
| LB | | GH6RR | | | | | | | | NS | 3G | | | Y | Yes | NE | N51 - North | Y | Yes | CC | 2021 KureN | N | No | SE | | N | | CC | | | | | | | | | | |
| LB | | POLE 1 | | | | | | | | NS | 3G | | | Y | Yes | NE | N51 - North | Y | Yes | CC | 2021 KureN | N | No | SE | | N | | CC | | | | | | | | | | |
| LB | | POLE 2 | | | | | | | | NS | 3G | | | Y | Yes | NE | N51 - North | Y | Yes | CC | 2021 KureN | N | No | SE | | N | | CC | | | | | | | | | | |
| SC | | | | | | | | | | NS | 3G | | | Y | Yes | NE | N51 - North | Y | Yes | CC | 2021 KureN | N | No | SE | | N | | CC | | | | | | | | | | |
| EN | | GH7_1 | | | | | | | | NS | 3G | | | Y | Yes | NE | N51 - North | Y | Yes | CC | 2021 KureN | N | No | SE | | N | | CC | | | | | | | | | | |
| LB | | GH7_1 | | | | | | | | NS | 3G | | | Y | Yes | NE | N51 - North | Y | Yes | CC | 2021 KureN | N | No | SE | | N | | CC | | | | | | | | | | |

3.7 Appendix D – MODIFIED Asset List Example

[illegible]

Appendix D – MODIFIED Asset List Example (continued)

[illegible]

Appendix D – MODIFIED Asset List Example (continued)

[illegible]

Appendix D – MODIFIED Asset List Example (continued)

[illegible]

Appendix D – MODIFIED Asset List Example (continued)

Page 40 of 46

3.8 Appendix E – CREATE Associated Equipment Items (AEI) Asset List Template

| Prod Unit (Assembly SPN) | Plant No (AEI SPN) | Equip Class | EGI | Equip Status | Equip Location | Equip Description 1 | Equip Description 2 | PlantN01 | PlantN02 | PlantN03 | PlantN04 | PlantN05 | PlantN06 | Con Seg Start | Con Seg End |
|--------------------------|------------------------------|-------------|-------------|--------------|----------------|---------------------------|------------------------|----------|----------|----------|----------|----------|----------|---------------|-------------|
| N73100180641.552UBA001 | N73100180641.552UBA00155C | SB | S80000055C | PN | GUR | Concrete Abutment A001 | UNDR GURLEY GURLEY CRK | N73 | 10018 | 0641.552 | UB | A001 | 55C | 0641.552 | 641.562 |
| N73100180641.552UBA001 | N73100180641.552UBA00156PN01 | SB | S80000056P | PN | GUR | PCC Wingwall A001 N01 | UNDR GURLEY GURLEY CRK | N73 | 10018 | 0641.552 | UB | A001 | 56PN01 | 0641.552 | 641.562 |
| N73100180641.552UBA001 | N73100180641.552UBA00156PN02 | SB | S80000056P | PN | GUR | PCC Wingwall A001 N02 | UNDR GURLEY GURLEY CRK | N73 | 10018 | 0641.552 | UB | A001 | 56PN02 | 0641.552 | 641.562 |
| N73100180641.552UBA002 | N73100180641.552UBA00255C | SB | S80000055C | PN | GUR | Concrete Abutment A002 | UNDR GURLEY GURLEY CRK | N73 | 10018 | 0641.552 | UB | A002 | 55C | 0641.552 | 641.562 |
| N73100180641.552UBA002 | N73100180641.552UBA00256PN01 | SB | S80000056P | PN | GUR | PCC Wingwall A002 N01 | UNDR GURLEY GURLEY CRK | N73 | 10018 | 0641.552 | UB | A002 | 56PN01 | 0641.552 | 641.562 |
| N73100180641.552UBA002 | N73100180641.552UBA00256PN02 | SB | S80000056P | PN | GUR | PCC Wingwall A002 N02 | UNDR GURLEY GURLEY CRK | N73 | 10018 | 0641.552 | UB | A002 | 56PN02 | 0641.552 | 641.562 |
| N73100180641.552UBS001 | N73100180641.552UBS00101C | DE | DE00000001C | PN | GUR | Concrete Deck S001 | UNDR GURLEY GURLEY CRK | N73 | 10018 | 0641.552 | UB | S001 | 01C | 0641.552 | 641.562 |
| N73100180641.552UBS001 | N73100180641.552UBS00121PN01 | SP | SP0P00021P | PN | GUR | PCC Box Girder S001 N01 | UNDR GURLEY GURLEY CRK | N73 | 10018 | 0641.552 | UB | S001 | 21PN01 | 0641.552 | 641.562 |
| N73100180641.552UBS001 | N73100180641.552UBS00121PN02 | SP | SP0P00021P | PN | GUR | PCC Box Girder S001 N02 | UNDR GURLEY GURLEY CRK | N73 | 10018 | 0641.552 | UB | S001 | 21PN02 | 0641.552 | 641.562 |
| N73100180641.552UBS001 | N73100180641.552UBS00103S | DE | DE00000003S | PN | GUR | Steel Walkway/Refuge S001 | UNDR GURLEY GURLEY CRK | N73 | 10018 | 0641.552 | UB | S001 | 03S | 0641.552 | 641.562 |
| N73100180641.552UBS002 | N73100180641.552UBS00201C | DE | DE00000001C | PN | GUR | Concrete Deck S002 | UNDR GURLEY GURLEY CRK | N73 | 10018 | 0641.552 | UB | S002 | 01C | 0641.552 | 641.562 |
| N73100180641.552UBS002 | N73100180641.552UBS00221PN01 | SP | SP0P00021P | PN | GUR | PCC Box Girder S002 N01 | UNDR GURLEY GURLEY CRK | N73 | 10018 | 0641.552 | UB | S002 | 21PN01 | 0641.552 | 641.562 |
| N73100180641.552UBS002 | N73100180641.552UBS00221PN02 | SP | SP0P00021P | PN | GUR | PCC Box Girder S002 N02 | UNDR GURLEY GURLEY CRK | N73 | 10018 | 0641.552 | UB | S002 | 21PN02 | 0641.552 | 641.562 |
| N73100180641.552UBS002 | N73100180641.552UBS00203S | DE | DE00000003S | PN | GUR | Steel Walkway/Refuge S002 | UNDR GURLEY GURLEY CRK | N73 | 10018 | 0641.552 | UB | S002 | 03S | 0641.552 | 641.562 |
| N73100180641.552UBS003 | N73100180641.552UBS00301C | DE | DE00000001C | PN | GUR | Concrete Deck S003 | UNDR GURLEY GURLEY CRK | N73 | 10018 | 0641.552 | UB | S003 | 01C | 0641.552 | 641.562 |
| N73100180641.552UBS003 | N73100180641.552UBS00321PN01 | SP | SP0P00021P | PN | GUR | PCC Box Girder S003 N01 | UNDR GURLEY GURLEY CRK | N73 | 10018 | 0641.552 | UB | S003 | 21PN01 | 0641.552 | 641.562 |
| N73100180641.552UBS003 | N73100180641.552UBS00321PN02 | SP | SP0P00021P | PN | GUR | PCC Box Girder S003 N02 | UNDR GURLEY GURLEY CRK | N73 | 10018 | 0641.552 | UB | S003 | 21PN02 | 0641.552 | 641.562 |
| N73100180641.552UBS003 | N73100180641.552UBS00303S | DE | DE00000003S | PN | GUR | Steel Walkway/Refuge S003 | UNDR GURLEY GURLEY CRK | N73 | 10018 | 0641.552 | UB | S003 | 03S | 0641.552 | 641.562 |
| N73100180641.552UBS004 | N73100180641.552UBS00401C | DE | DE00000001C | PN | GUR | Concrete Deck S004 | UNDR GURLEY GURLEY CRK | N73 | 10018 | 0641.552 | UB | S004 | 01C | 0641.552 | 641.562 |
| N73100180641.552UBS004 | N73100180641.552UBS00421PN01 | SP | SP0P00021P | PN | GUR | PCC Box Girder S004 N01 | UNDR GURLEY GURLEY CRK | N73 | 10018 | 0641.552 | UB | S004 | 21PN01 | 0641.552 | 641.562 |
| N73100180641.552UBS004 | N73100180641.552UBS00421PN02 | SP | SP0P00021P | PN | GUR | PCC Box Girder S004 N02 | UNDR GURLEY GURLEY CRK | N73 | 10018 | 0641.552 | UB | S004 | 21PN02 | 0641.552 | 641.562 |
| N73100180641.552UBS004 | N73100180641.552UBS00403S | DE | DE00000003S | PN | GUR | Steel Walkway/Refuge S004 | UNDR GURLEY GURLEY CRK | N73 | 10018 | 0641.552 | UB | S004 | 03S | 0641.552 | 641.562 |
| N73100180641.552UBS005 | N73100180641.552UBS00501C | DE | DE00000001C | PN | GUR | Concrete Deck S005 | UNDR GURLEY GURLEY CRK | N73 | 10018 | 0641.552 | UB | S005 | 01C | 0641.552 | 641.562 |
| N73100180641.552UBS005 | N73100180641.552UBS00521PN01 | SP | SP0P00021P | PN | GUR | PCC Box Girder S005 N01 | UNDR GURLEY GURLEY CRK | N73 | 10018 | 0641.552 | UB | S005 | 21PN01 | 0641.552 | 641.562 |
| N73100180641.552UBS005 | N73100180641.552UBS00521PN02 | SP | SP0P00021P | PN | GUR | PCC Box Girder S005 N02 | UNDR GURLEY GURLEY CRK | N73 | 10018 | 0641.552 | UB | S005 | 21PN02 | 0641.552 | 641.562 |
| N73100180641.552UBS005 | N73100180641.552UBS00503S | DE | DE00000003S | PN | GUR | Steel Walkway/Refuge S005 | UNDR GURLEY GURLEY CRK | N73 | 10018 | 0641.552 | UB | S005 | 03S | 0641.552 | 641.562 |
| N73100180641.552UBS006 | N73100180641.552UBS00601C | DE | DE00000001C | PN | GUR | Concrete Deck S006 | UNDR GURLEY GURLEY CRK | N73 | 10018 | 0641.552 | UB | S006 | 01C | 0641.552 | 641.562 |
| N73100180641.552UBS006 | N73100180641.552UBS00621PN01 | SP | SP0P00021P | PN | GUR | PCC Box Girder S006 N01 | UNDR GURLEY GURLEY CRK | N73 | 10018 | 0641.552 | UB | S006 | 21PN01 | 0641.552 | 641.562 |
| N73100180641.552UBS006 | N73100180641.552UBS00621PN02 | SP | SP0P00021P | PN | GUR | PCC Box Girder S006 N02 | UNDR GURLEY GURLEY CRK | N73 | 10018 | 0641.552 | UB | S006 | 21PN02 | 0641.552 | 641.562 |
| N73100180641.552UBS006 | N73100180641.552UBS00603S | DE | DE00000003S | PN | GUR | Steel Walkway/Refuge S006 | UNDR GURLEY GURLEY CRK | N73 | 10018 | 0641.552 | UB | S006 | 03S | 0641.552 | 641.562 |
| N73100180641.552UBS007 | N73100180641.552UBS00701C | DE | DE00000001C | PN | GUR | Concrete Deck S007 | UNDR GURLEY GURLEY CRK | N73 | 10018 | 0641.552 | UB | S007 | 01C | 0641.552 | 641.562 |
| N73100180641.552UBS007 | N73100180641.552UBS00721PN01 | SP | SP0P00021P | PN | GUR | PCC Box Girder S007 N01 | UNDR GURLEY GURLEY CRK | N73 | 10018 | 0641.552 | UB | S007 | 21PN01 | 0641.552 | 641.562 |
| N73100180641.552UBS007 | N73100180641.552UBS00721PN02 | SP | SP0P00021P | PN | GUR | PCC Box Girder S007 N02 | UNDR GURLEY GURLEY CRK | N73 | 10018 | 0641.552 | UB | S007 | 21PN02 | 0641.552 | 641.562 |
| N73100180641.552UBS007 | N73100180641.552UBS00703S | DE | DE00000003S | PN | GUR | Steel Walkway/Refuge S007 | UNDR GURLEY GURLEY CRK | N73 | 10018 | 0641.552 | UB | S007 | 03S | 0641.552 | 641.562 |
| N73100180641.552UBS008 | N73100180641.552UBS00801C | DE | DE00000001C | PN | GUR | Concrete Deck S008 | UNDR GURLEY GURLEY CRK | N73 | 10018 | 0641.552 | UB | S008 | 01C | 0641.552 | 641.562 |
| N73100180641.552UBS008 | N73100180641.552UBS00821PN01 | SP | SP0P00021P | PN | GUR | PCC Box Girder S008 N01 | UNDR GURLEY GURLEY CRK | N73 | 10018 | 0641.552 | UB | S008 | 21PN01 | 0641.552 | 641.562 |
| N73100180641.552UBS008 | N73100180641.552UBS00821PN02 | SP | SP0P00021P | PN | GUR | PCC Box Girder S008 N02 | UNDR GURLEY GURLEY CRK | N73 | 10018 | 0641.552 | UB | S008 | 21PN02 | 0641.552 | 641.562 |
| N73100180641.552UBS008 | N73100180641.552UBS00803S | DE | DE00000003S | PN | GUR | Steel Walkway/Refuge S008 | UNDR GURLEY GURLEY CRK | N73 | 10018 | 0641.552 | UB | S008 | 03S | 0641.552 | 641.562 |
| N73100180641.552UBS009 | N73100180641.552UBS00901C | DE | DE00000001C | PN | GUR | Concrete Deck S009 | UNDR GURLEY GURLEY CRK | N73 | 10018 | 0641.552 | UB | S009 | 01C | 0641.552 | 641.562 |
| N73100180641.552UBS009 | N73100180641.552UBS00921PN01 | SP | SP0P00021P | PN | GUR | PCC Box Girder S009 N01 | UNDR GURLEY GURLEY CRK | N73 | 10018 | 0641.552 | UB | S009 | 21PN01 | 0641.552 | 641.562 |
| N73100180641.552UBS009 | N73100180641.552UBS00921PN02 | SP | SP0P00021P | PN | GUR | PCC Box Girder S009 N02 | UNDR GURLEY GURLEY CRK | N73 | 10018 | 0641.552 | UB | S009 | 21PN02 | 0641.552 | 641.562 |
| N73100180641.552UBS009 | N73100180641.552UBS00903S | DE | DE00000003S | PN | GUR | Steel Walkway/Refuge S009 | UNDR GURLEY GURLEY CRK | N73 | 10018 | 0641.552 | UB | S009 | 03S | 0641.552 | 641.562 |
| N73100180641.552UBS010 | N73100180641.552UBS01001C | DE | DE00000001C | PN | GUR | Concrete Deck S010 | UNDR GURLEY GURLEY CRK | N73 | 10018 | 0641.552 | UB | S010 | 01C | 0641.552 | 641.562 |
| N73100180641.552UBS010 | N73100180641.552UBS01021PN01 | SP | SP0P00021P | PN | GUR | PCC Box Girder S010 N01 | UNDR GURLEY GURLEY CRK | N73 | 10018 | 0641.552 | UB | S010 | 21PN01 | 0641.552 | 641.562 |
| N73100180641.552UBS010 | N73100180641.552UBS01021PN02 | SP | SP0P00021P | PN | GUR | PCC Box Girder S010 N02 | UNDR GURLEY GURLEY CRK | N73 | 10018 | 0641.552 | UB | S010 | 21PN02 | 0641.552 | 641.562 |
| N73100180641.552UBS010 | N73100180641.552UBS01003S | DE | DE00000003S | PN | GUR | Steel Walkway/Refuge S010 | UNDR GURLEY GURLEY CRK | N73 | 10018 | 0641.552 | UB | S010 | 03S | 0641.552 | 641.562 |
| N73100180641.552UBS011 | N73100180641.552UBS01101C | DE | DE00000001C | PN | GUR | Concrete Deck S011 | UNDR GURLEY GURLEY CRK | N73 | 10018 | 0641.552 | UB | S011 | 01C | 0641.552 | 641.562 |
| N73100180641.552UBS011 | N73100180641.552UBS01121PN01 | SP | SP0P00021P | PN | GUR | PCC Box Girder S011 N01 | UNDR GURLEY GURLEY CRK | N73 | 10018 | 0641.552 | UB | S011 | 21PN01 | 0641.552 | 641.562 |

Appendix E – CREATE Associated Equipment Items (AEI) Asset List Template (continued)

| | | | | | | | | | | | | | | | | |
|------------------------|------------------------------|----|------------|----|-----|-----------------------------------|-------------------------|-----|-------|----------|----|------|--------|----------|--|---------|
| N73100180641.552UB5011 | N73100180641.552UB501121PN02 | 5P | SP0P00021P | PN | GUR | PCC Box Girder S011 N02 | UNDBR GURLEY GURLEY CRK | N73 | 10018 | 0641.552 | UB | 5011 | 21PN02 | 0641.552 | | 641.562 |
| N73100180641.552UB5011 | N73100180641.552UB501103S | DE | DE0000003S | PN | GUR | Steel Walkway/Refuge S011 | UNDBR GURLEY GURLEY CRK | N73 | 10018 | 0641.552 | UB | 5011 | 03S | 0641.552 | | 641.562 |
| N73100180641.552UB5012 | N73100180641.552UB501201C | DE | DE0000001C | PN | GUR | Concrete Deck S012 | UNDBR GURLEY GURLEY CRK | N73 | 10018 | 0641.552 | UB | 5012 | 01C | 0641.552 | | 641.562 |
| N73100180641.552UB5012 | N73100180641.552UB501221PN01 | 5P | SP0P00021P | PN | GUR | PCC Box Girder S012 N01 | UNDBR GURLEY GURLEY CRK | N73 | 10018 | 0641.552 | UB | 5012 | 21PN01 | 0641.552 | | 641.562 |
| N73100180641.552UB5012 | N73100180641.552UB501221PN02 | 5P | SP0P00021P | PN | GUR | PCC Box Girder S012 N02 | UNDBR GURLEY GURLEY CRK | N73 | 10018 | 0641.552 | UB | 5012 | 21PN02 | 0641.552 | | 641.562 |
| N73100180641.552UB5012 | N73100180641.552UB501203S | DE | DE0000003S | PN | GUR | Steel Walkway/Refuge S012 | UNDBR GURLEY GURLEY CRK | N73 | 10018 | 0641.552 | UB | 5012 | 03S | 0641.552 | | 641.562 |
| N73100180641.552UB5013 | N73100180641.552UB501301C | DE | DE0000001C | PN | GUR | Concrete Deck S013 | UNDBR GURLEY GURLEY CRK | N73 | 10018 | 0641.552 | UB | 5013 | 01C | 0641.552 | | 641.562 |
| N73100180641.552UB5013 | N73100180641.552UB501321PN01 | 5P | SP0P00021P | PN | GUR | PCC Box Girder S013 N01 | UNDBR GURLEY GURLEY CRK | N73 | 10018 | 0641.552 | UB | 5013 | 21PN01 | 0641.552 | | 641.562 |
| N73100180641.552UB5013 | N73100180641.552UB501321PN02 | 5P | SP0P00021P | PN | GUR | PCC Box Girder S013 N02 | UNDBR GURLEY GURLEY CRK | N73 | 10018 | 0641.552 | UB | 5013 | 21PN02 | 0641.552 | | 641.562 |
| N73100180641.552UB5013 | N73100180641.552UB501303S | DE | DE0000003S | PN | GUR | Steel Walkway/Refuge S013 | UNDBR GURLEY GURLEY CRK | N73 | 10018 | 0641.552 | UB | 5013 | 03S | 0641.552 | | 641.562 |
| N73100180641.552UBP001 | N73100180641.552UBP00133CN01 | 5B | SB0000003C | PN | GUR | Concrete Columns or File P001 N01 | UNDBR GURLEY GURLEY CRK | N73 | 10018 | 0641.552 | UB | P001 | 33CN01 | 0641.552 | | 641.562 |
| N73100180641.552UBP001 | N73100180641.552UBP00133CN02 | 5B | SB0000003C | PN | GUR | Concrete Columns or File P001 N02 | UNDBR GURLEY GURLEY CRK | N73 | 10018 | 0641.552 | UB | P001 | 33CN02 | 0641.552 | | 641.562 |
| N73100180641.552UBP001 | N73100180641.552UBP00131P | 5B | SB0000003P | PN | GUR | PCC Headstock P001 | UNDBR GURLEY GURLEY CRK | N73 | 10018 | 0641.552 | UB | P001 | 31P | 0641.552 | | 641.562 |
| N73100180641.552UBP002 | N73100180641.552UBP00233CN01 | 5B | SB0000003C | PN | GUR | Concrete Columns or File P002 N01 | UNDBR GURLEY GURLEY CRK | N73 | 10018 | 0641.552 | UB | P002 | 33CN01 | 0641.552 | | 641.562 |
| N73100180641.552UBP002 | N73100180641.552UBP00233CN02 | 5B | SB0000003C | PN | GUR | Concrete Columns or File P002 N02 | UNDBR GURLEY GURLEY CRK | N73 | 10018 | 0641.552 | UB | P002 | 33CN02 | 0641.552 | | 641.562 |
| N73100180641.552UBP002 | N73100180641.552UBP00231P | 5B | SB0000003P | PN | GUR | PCC Headstock P002 | UNDBR GURLEY GURLEY CRK | N73 | 10018 | 0641.552 | UB | P002 | 31P | 0641.552 | | 641.562 |
| N73100180641.552UBP003 | N73100180641.552UBP00333CN01 | 5B | SB0000003C | PN | GUR | Concrete Columns or File P003 N01 | UNDBR GURLEY GURLEY CRK | N73 | 10018 | 0641.552 | UB | P003 | 33CN01 | 0641.552 | | 641.562 |
| N73100180641.552UBP003 | N73100180641.552UBP00333CN02 | 5B | SB0000003C | PN | GUR | Concrete Columns or File P003 N02 | UNDBR GURLEY GURLEY CRK | N73 | 10018 | 0641.552 | UB | P003 | 33CN02 | 0641.552 | | 641.562 |
| N73100180641.552UBP003 | N73100180641.552UBP00331P | 5B | SB0000003P | PN | GUR | PCC Headstock P003 | UNDBR GURLEY GURLEY CRK | N73 | 10018 | 0641.552 | UB | P003 | 31P | 0641.552 | | 641.562 |
| N73100180641.552UBP004 | N73100180641.552UBP00433CN01 | 5B | SB0000003C | PN | GUR | Concrete Columns or File P004 N01 | UNDBR GURLEY GURLEY CRK | N73 | 10018 | 0641.552 | UB | P004 | 33CN01 | 0641.552 | | 641.562 |
| N73100180641.552UB5004 | N73100180641.552UB500433CN02 | 5B | SB0000003C | PN | GUR | Concrete Columns or File P004 N02 | UNDBR GURLEY GURLEY CRK | N73 | 10018 | 0641.552 | UB | P004 | 33CN02 | 0641.552 | | 641.562 |
| N73100180641.552UBP004 | N73100180641.552UBP00431P | 5B | SB0000003P | PN | GUR | PCC Headstock P004 | UNDBR GURLEY GURLEY CRK | N73 | 10018 | 0641.552 | UB | P004 | 31P | 0641.552 | | 641.562 |
| N73100180641.552UBP005 | N73100180641.552UBP00533CN01 | 5B | SB0000003C | PN | GUR | Concrete Columns or File P005 N01 | UNDBR GURLEY GURLEY CRK | N73 | 10018 | 0641.552 | UB | P005 | 33CN01 | 0641.552 | | 641.562 |
| N73100180641.552UBP005 | N73100180641.552UBP00533CN02 | 5B | SB0000003C | PN | GUR | Concrete Columns or File P005 N02 | UNDBR GURLEY GURLEY CRK | N73 | 10018 | 0641.552 | UB | P005 | 33CN02 | 0641.552 | | 641.562 |
| N73100180641.552UBP005 | N73100180641.552UBP00531P | 5B | SB0000003P | PN | GUR | PCC Headstock P005 | UNDBR GURLEY GURLEY CRK | N73 | 10018 | 0641.552 | UB | P005 | 31P | 0641.552 | | 641.562 |
| N73100180641.552UBP006 | N73100180641.552UBP00633CN01 | 5B | SB0000003C | PN | GUR | Concrete Columns or File P006 N01 | UNDBR GURLEY GURLEY CRK | N73 | 10018 | 0641.552 | UB | P006 | 33CN01 | 0641.552 | | 641.562 |
| N73100180641.552UBP006 | N73100180641.552UBP00633CN02 | 5B | SB0000003C | PN | GUR | Concrete Columns or File P006 N03 | UNDBR GURLEY GURLEY CRK | N73 | 10018 | 0641.552 | UB | P006 | 33CN02 | 0641.552 | | 641.562 |
| N73100180641.552UBP006 | N73100180641.552UBP00631P | 5B | SB0000003P | PN | GUR | PCC Headstock P006 | UNDBR GURLEY GURLEY CRK | N73 | 10018 | 0641.552 | UB | P006 | 31P | 0641.552 | | 641.562 |
| N73100180641.552UBP007 | N73100180641.552UBP00733CN01 | 5B | SB0000003C | PN | GUR | Concrete Columns or File P007 N01 | UNDBR GURLEY GURLEY CRK | N73 | 10018 | 0641.552 | UB | P007 | 33CN01 | 0641.552 | | 641.562 |
| N73100180641.552UBP007 | N73100180641.552UBP00733CN02 | 5B | SB0000003C | PN | GUR | Concrete Columns or File P007 N02 | UNDBR GURLEY GURLEY CRK | N73 | 10018 | 0641.552 | UB | P007 | 33CN02 | 0641.552 | | 641.562 |
| N73100180641.552UBP007 | N73100180641.552UBP00731P | 5B | SB0000003P | PN | GUR | PCC Headstock P007 | UNDBR GURLEY GURLEY CRK | N73 | 10018 | 0641.552 | UB | P007 | 31P | 0641.552 | | 641.562 |
| N73100180641.552UBP008 | N73100180641.552UBP00833CN01 | 5B | SB0000003C | PN | GUR | Concrete Columns or File P008 N01 | UNDBR GURLEY GURLEY CRK | N73 | 10018 | 0641.552 | UB | P008 | 33CN01 | 0641.552 | | 641.562 |
| N73100180641.552UBP008 | N73100180641.552UBP00833CN02 | 5B | SB0000003C | PN | GUR | Concrete Columns or File P008 N02 | UNDBR GURLEY GURLEY CRK | N73 | 10018 | 0641.552 | UB | P008 | 33CN02 | 0641.552 | | 641.562 |
| N73100180641.552UBP008 | N73100180641.552UBP00831P | 5B | SB0000003P | PN | GUR | PCC Headstock P008 | UNDBR GURLEY GURLEY CRK | N73 | 10018 | 0641.552 | UB | P008 | 31P | 0641.552 | | 641.562 |
| N73100180641.552UBP009 | N73100180641.552UBP00933CN01 | 5B | SB0000003C | PN | GUR | Concrete Columns or File P009 N01 | UNDBR GURLEY GURLEY CRK | N73 | 10018 | 0641.552 | UB | P009 | 33CN01 | 0641.552 | | 641.562 |
| N73100180641.552UBP009 | N73100180641.552UBP00933CN02 | 5B | SB0000003C | PN | GUR | Concrete Columns or File P009 N02 | UNDBR GURLEY GURLEY CRK | N73 | 10018 | 0641.552 | UB | P009 | 33CN02 | 0641.552 | | 641.562 |
| N73100180641.552UBP009 | N73100180641.552UBP00931P | 5B | SB0000003P | PN | GUR | PCC Headstock P009 | UNDBR GURLEY GURLEY CRK | N73 | 10018 | 0641.552 | UB | P009 | 31P | 0641.552 | | 641.562 |
| N73100180641.552UBP010 | N73100180641.552UBP01033CN01 | 5B | SB0000003C | PN | GUR | Concrete Columns or File P010 N01 | UNDBR GURLEY GURLEY CRK | N73 | 10018 | 0641.552 | UB | P010 | 33CN01 | 0641.552 | | 641.562 |
| N73100180641.552UBP010 | N73100180641.552UBP01033CN02 | 5B | SB0000003C | PN | GUR | Concrete Columns or File P010 N02 | UNDBR GURLEY GURLEY CRK | N73 | 10018 | 0641.552 | UB | P010 | 33CN02 | 0641.552 | | 641.562 |
| N73100180641.552UBP010 | N73100180641.552UBP01031P | 5B | SB0000003P | PN | GUR | PCC Headstock P010 | UNDBR GURLEY GURLEY CRK | N73 | 10018 | 0641.552 | UB | P010 | 31P | 0641.552 | | 641.562 |
| N73100180641.552UBP011 | N73100180641.552UBP01133CN01 | 5B | SB0000003C | PN | GUR | Concrete Columns or File P011 N01 | UNDBR GURLEY GURLEY CRK | N73 | 10018 | 0641.552 | UB | P011 | 33CN01 | 0641.552 | | 641.562 |
| N73100180641.552UBP011 | N73100180641.552UBP01133CN02 | 5B | SB0000003C | PN | GUR | Concrete Columns or File P011 N02 | UNDBR GURLEY GURLEY CRK | N73 | 10018 | 0641.552 | UB | P011 | 33CN02 | 0641.552 | | 641.562 |
| N73100180641.552UBP011 | N73100180641.552UBP01131P | 5B | SB0000003P | PN | GUR | PCC Headstock P011 | UNDBR GURLEY GURLEY CRK | N73 | 10018 | 0641.552 | UB | P011 | 31P | 0641.552 | | 641.562 |
| N73100180641.552UBP012 | N73100180641.552UBP01233CN01 | 5B | SB0000003C | PN | GUR | Concrete Columns or File P012 N01 | UNDBR GURLEY GURLEY CRK | N73 | 10018 | 0641.552 | UB | P012 | 33CN01 | 0641.552 | | 641.562 |

3.9 Appendix E1 – CREATE Associated Equipment Items (AEI) Asset List Example

| Prod Unit (Assembly SPN) | Plant No (AEI SPN) | Equip Class | EGI | Equip Status | Equip Location | Equip Description 1 | Equip Description 2 | PlantN01 | PlantN02 | PlantN03 | PlantN04 | PlantN05 | PlantN06 | Con Seg Start | Con Seg End |
|--------------------------|-------------------------------|-------------|-------------|--------------|----------------|---------------------------|------------------------|----------|----------|----------|----------|----------|----------|---------------|-------------|
| N731001.80641.352UBA001 | N731001.80641.352UBA00135C | 5B | S800000035C | PN | GUR | Concrete Abutment A001 | UNDR GURLEY GURLEY CRK | N73 | 10018 | 0641.352 | UB | A001 | 35C | 0641.352 | 641.362 |
| N731001.80641.352UBA001 | N731001.80641.352UBA00136PNO1 | 5B | S800000036P | PN | GUR | PCC Wingwall A001 N01 | UNDR GURLEY GURLEY CRK | N73 | 10018 | 0641.352 | UB | A001 | 36PNO1 | 0641.352 | 641.362 |
| N731001.80641.352UBA001 | N731001.80641.352UBA00136PNO2 | 5B | S800000036P | PN | GUR | PCC Wingwall A001 N02 | UNDR GURLEY GURLEY CRK | N73 | 10018 | 0641.352 | UB | A001 | 36PNO2 | 0641.352 | 641.362 |
| N731001.80641.352UBA002 | N731001.80641.352UBA00235C | 5B | S800000035C | PN | GUR | Concrete Abutment A002 | UNDR GURLEY GURLEY CRK | N73 | 10018 | 0641.352 | UB | A002 | 35C | 0641.352 | 641.362 |
| N731001.80641.352UBA002 | N731001.80641.352UBA00236PNO1 | 5B | S800000036P | PN | GUR | PCC Wingwall A002 N01 | UNDR GURLEY GURLEY CRK | N73 | 10018 | 0641.352 | UB | A002 | 36PNO1 | 0641.352 | 641.362 |
| N731001.80641.352UBA002 | N731001.80641.352UBA00236PNO2 | 5B | S800000036P | PN | GUR | PCC Wingwall A002 N02 | UNDR GURLEY GURLEY CRK | N73 | 10018 | 0641.352 | UB | A002 | 36PNO2 | 0641.352 | 641.362 |
| N731001.80641.352UBS001 | N731001.80641.352UBS00101C | DE | DE00000001C | PN | GUR | Concrete Deck 5001 | UNDR GURLEY GURLEY CRK | N73 | 10018 | 0641.352 | UB | 5001 | 01C | 0641.352 | 641.362 |
| N731001.80641.352UBS001 | N731001.80641.352UBS00111PN01 | 5P | SP0P000021P | PN | GUR | PCC Box Girder 5001 N01 | UNDR GURLEY GURLEY CRK | N73 | 10018 | 0641.352 | UB | 5001 | 11PN01 | 0641.352 | 641.362 |
| N731001.80641.352UBS001 | N731001.80641.352UBS00111PN02 | 5P | SP0P000021P | PN | GUR | PCC Box Girder 5001 N02 | UNDR GURLEY GURLEY CRK | N73 | 10018 | 0641.352 | UB | 5001 | 11PN02 | 0641.352 | 641.362 |
| N731001.80641.352UBS001 | N731001.80641.352UBS00103S | DE | DE00000003S | PN | GUR | Steel Walkway/Refuge 5001 | UNDR GURLEY GURLEY CRK | N73 | 10018 | 0641.352 | UB | 5001 | 03S | 0641.352 | 641.362 |
| N731001.80641.352UBS002 | N731001.80641.352UBS00201C | DE | DE00000001C | PN | GUR | Concrete Deck 5002 | UNDR GURLEY GURLEY CRK | N73 | 10018 | 0641.352 | UB | 5002 | 01C | 0641.352 | 641.362 |
| N731001.80641.352UBS002 | N731001.80641.352UBS00211PN01 | 5P | SP0P000021P | PN | GUR | PCC Box Girder 5002 N01 | UNDR GURLEY GURLEY CRK | N73 | 10018 | 0641.352 | UB | 5002 | 11PN01 | 0641.352 | 641.362 |
| N731001.80641.352UBS002 | N731001.80641.352UBS00211PN02 | 5P | SP0P000021P | PN | GUR | PCC Box Girder 5002 N02 | UNDR GURLEY GURLEY CRK | N73 | 10018 | 0641.352 | UB | 5002 | 11PN02 | 0641.352 | 641.362 |
| N731001.80641.352UBS002 | N731001.80641.352UBS00203S | DE | DE00000003S | PN | GUR | Steel Walkway/Refuge 5002 | UNDR GURLEY GURLEY CRK | N73 | 10018 | 0641.352 | UB | 5002 | 03S | 0641.352 | 641.362 |
| N731001.80641.352UBS003 | N731001.80641.352UBS00301C | DE | DE00000001C | PN | GUR | Concrete Deck 5003 | UNDR GURLEY GURLEY CRK | N73 | 10018 | 0641.352 | UB | 5003 | 01C | 0641.352 | 641.362 |
| N731001.80641.352UBS003 | N731001.80641.352UBS00311PN01 | 5P | SP0P000021P | PN | GUR | PCC Box Girder 5003 N01 | UNDR GURLEY GURLEY CRK | N73 | 10018 | 0641.352 | UB | 5003 | 11PN01 | 0641.352 | 641.362 |
| N731001.80641.352UBS003 | N731001.80641.352UBS00311PN02 | 5P | SP0P000021P | PN | GUR | PCC Box Girder 5003 N02 | UNDR GURLEY GURLEY CRK | N73 | 10018 | 0641.352 | UB | 5003 | 11PN02 | 0641.352 | 641.362 |
| N731001.80641.352UBS003 | N731001.80641.352UBS00303S | DE | DE00000003S | PN | GUR | Steel Walkway/Refuge 5003 | UNDR GURLEY GURLEY CRK | N73 | 10018 | 0641.352 | UB | 5003 | 03S | 0641.352 | 641.362 |
| N731001.80641.352UBS004 | N731001.80641.352UBS00401C | DE | DE00000001C | PN | GUR | Concrete Deck 5004 | UNDR GURLEY GURLEY CRK | N73 | 10018 | 0641.352 | UB | 5004 | 01C | 0641.352 | 641.362 |
| N731001.80641.352UBS004 | N731001.80641.352UBS00411PN01 | 5P | SP0P000021P | PN | GUR | PCC Box Girder 5004 N01 | UNDR GURLEY GURLEY CRK | N73 | 10018 | 0641.352 | UB | 5004 | 11PN01 | 0641.352 | 641.362 |
| N731001.80641.352UBS004 | N731001.80641.352UBS00411PN02 | 5P | SP0P000021P | PN | GUR | PCC Box Girder 5004 N02 | UNDR GURLEY GURLEY CRK | N73 | 10018 | 0641.352 | UB | 5004 | 11PN02 | 0641.352 | 641.362 |
| N731001.80641.352UBS004 | N731001.80641.352UBS00403S | DE | DE00000003S | PN | GUR | Steel Walkway/Refuge 5004 | UNDR GURLEY GURLEY CRK | N73 | 10018 | 0641.352 | UB | 5004 | 03S | 0641.352 | 641.362 |
| N731001.80641.352UBS005 | N731001.80641.352UBS00501C | DE | DE00000001C | PN | GUR | Concrete Deck 5005 | UNDR GURLEY GURLEY CRK | N73 | 10018 | 0641.352 | UB | 5005 | 01C | 0641.352 | 641.362 |
| N731001.80641.352UBS005 | N731001.80641.352UBS00511PN01 | 5P | SP0P000021P | PN | GUR | PCC Box Girder 5005 N01 | UNDR GURLEY GURLEY CRK | N73 | 10018 | 0641.352 | UB | 5005 | 11PN01 | 0641.352 | 641.362 |
| N731001.80641.352UBS005 | N731001.80641.352UBS00511PN02 | 5P | SP0P000021P | PN | GUR | PCC Box Girder 5005 N02 | UNDR GURLEY GURLEY CRK | N73 | 10018 | 0641.352 | UB | 5005 | 11PN02 | 0641.352 | 641.362 |
| N731001.80641.352UBS005 | N731001.80641.352UBS00503S | DE | DE00000003S | PN | GUR | Steel Walkway/Refuge 5005 | UNDR GURLEY GURLEY CRK | N73 | 10018 | 0641.352 | UB | 5005 | 03S | 0641.352 | 641.362 |
| N731001.80641.352UBS006 | N731001.80641.352UBS00601C | DE | DE00000001C | PN | GUR | Concrete Deck 5006 | UNDR GURLEY GURLEY CRK | N73 | 10018 | 0641.352 | UB | 5006 | 01C | 0641.352 | 641.362 |
| N731001.80641.352UBS006 | N731001.80641.352UBS00611PN01 | 5P | SP0P000021P | PN | GUR | PCC Box Girder 5006 N01 | UNDR GURLEY GURLEY CRK | N73 | 10018 | 0641.352 | UB | 5006 | 11PN01 | 0641.352 | 641.362 |
| N731001.80641.352UBS006 | N731001.80641.352UBS00611PN02 | 5P | SP0P000021P | PN | GUR | PCC Box Girder 5006 N02 | UNDR GURLEY GURLEY CRK | N73 | 10018 | 0641.352 | UB | 5006 | 11PN02 | 0641.352 | 641.362 |
| N731001.80641.352UBS006 | N731001.80641.352UBS00603S | DE | DE00000003S | PN | GUR | Steel Walkway/Refuge 5006 | UNDR GURLEY GURLEY CRK | N73 | 10018 | 0641.352 | UB | 5006 | 03S | 0641.352 | 641.362 |
| N731001.80641.352UBS007 | N731001.80641.352UBS00701C | DE | DE00000001C | PN | GUR | Concrete Deck 5007 | UNDR GURLEY GURLEY CRK | N73 | 10018 | 0641.352 | UB | 5007 | 01C | 0641.352 | 641.362 |
| N731001.80641.352UBS007 | N731001.80641.352UBS00711PN01 | 5P | SP0P000021P | PN | GUR | PCC Box Girder 5007 N01 | UNDR GURLEY GURLEY CRK | N73 | 10018 | 0641.352 | UB | 5007 | 11PN01 | 0641.352 | 641.362 |
| N731001.80641.352UBS007 | N731001.80641.352UBS00711PN02 | 5P | SP0P000021P | PN | GUR | PCC Box Girder 5007 N02 | UNDR GURLEY GURLEY CRK | N73 | 10018 | 0641.352 | UB | 5007 | 11PN02 | 0641.352 | 641.362 |
| N731001.80641.352UBS007 | N731001.80641.352UBS00703S | DE | DE00000003S | PN | GUR | Steel Walkway/Refuge 5007 | UNDR GURLEY GURLEY CRK | N73 | 10018 | 0641.352 | UB | 5007 | 03S | 0641.352 | 641.362 |
| N731001.80641.352UBS008 | N731001.80641.352UBS00801C | DE | DE00000001C | PN | GUR | Concrete Deck 5008 | UNDR GURLEY GURLEY CRK | N73 | 10018 | 0641.352 | UB | 5008 | 01C | 0641.352 | 641.362 |
| N731001.80641.352UBS008 | N731001.80641.352UBS00811PN01 | 5P | SP0P000021P | PN | GUR | PCC Box Girder 5008 N01 | UNDR GURLEY GURLEY CRK | N73 | 10018 | 0641.352 | UB | 5008 | 11PN01 | 0641.352 | 641.362 |
| N731001.80641.352UBS008 | N731001.80641.352UBS00811PN02 | 5P | SP0P000021P | PN | GUR | PCC Box Girder 5008 N02 | UNDR GURLEY GURLEY CRK | N73 | 10018 | 0641.352 | UB | 5008 | 11PN02 | 0641.352 | 641.362 |
| N731001.80641.352UBS008 | N731001.80641.352UBS00803S | DE | DE00000003S | PN | GUR | Steel Walkway/Refuge 5008 | UNDR GURLEY GURLEY CRK | N73 | 10018 | 0641.352 | UB | 5008 | 03S | 0641.352 | 641.362 |
| N731001.80641.352UBS009 | N731001.80641.352UBS00901C | DE | DE00000001C | PN | GUR | Concrete Deck 5009 | UNDR GURLEY GURLEY CRK | N73 | 10018 | 0641.352 | UB | 5009 | 01C | 0641.352 | 641.362 |
| N731001.80641.352UBS009 | N731001.80641.352UBS00911PN01 | 5P | SP0P000021P | PN | GUR | PCC Box Girder 5009 N01 | UNDR GURLEY GURLEY CRK | N73 | 10018 | 0641.352 | UB | 5009 | 11PN01 | 0641.352 | 641.362 |
| N731001.80641.352UBS009 | N731001.80641.352UBS00911PN02 | 5P | SP0P000021P | PN | GUR | PCC Box Girder 5009 N02 | UNDR GURLEY GURLEY CRK | N73 | 10018 | 0641.352 | UB | 5009 | 11PN02 | 0641.352 | 641.362 |
| N731001.80641.352UBS009 | N731001.80641.352UBS00903S | DE | DE00000003S | PN | GUR | Steel Walkway/Refuge 5009 | UNDR GURLEY GURLEY CRK | N73 | 10018 | 0641.352 | UB | 5009 | 03S | 0641.352 | 641.362 |
| N731001.80641.352UBS010 | N731001.80641.352UBS01001C | DE | DE00000001C | PN | GUR | Concrete Deck 5010 | UNDR GURLEY GURLEY CRK | N73 | 10018 | 0641.352 | UB | 5010 | 01C | 0641.352 | 641.362 |
| N731001.80641.352UBS010 | N731001.80641.352UBS01011PN01 | 5P | SP0P000021P | PN | GUR | PCC Box Girder 5010 N01 | UNDR GURLEY GURLEY CRK | N73 | 10018 | 0641.352 | UB | 5010 | 11PN01 | 0641.352 | 641.362 |
| N731001.80641.352UBS010 | N731001.80641.352UBS01011PN02 | 5P | SP0P000021P | PN | GUR | PCC Box Girder 5010 N02 | UNDR GURLEY GURLEY CRK | N73 | 10018 | 0641.352 | UB | 5010 | 11PN02 | 0641.352 | 641.362 |
| N731001.80641.352UBS010 | N731001.80641.352UBS01003S | DE | DE00000003S | PN | GUR | Steel Walkway/Refuge 5010 | UNDR GURLEY GURLEY CRK | N73 | 10018 | 0641.352 | UB | 5010 | 03S | 0641.352 | 641.362 |
| N731001.80641.352UBS011 | N731001.80641.352UBS01101C | DE | DE00000001C | PN | GUR | Concrete Deck 5011 | UNDR GURLEY GURLEY CRK | N73 | 10018 | 0641.352 | UB | 5011 | 01C | 0641.352 | 641.362 |
| N731001.80641.352UBS011 | N731001.80641.352UBS01111PN01 | 5P | SP0P000021P | PN | GUR | PCC Box Girder 5011 N01 | UNDR GURLEY GURLEY CRK | N73 | 10018 | 0641.352 | UB | 5011 | 11PN01 | 0641.352 | 641.362 |

Appendix E1 – CREATE Associated Equipment Items (AEI) Asset List Example (continued)

| | | | | | | | | | | | | | | | |
|------------------------|------------------------------|----|------------|----|-----|-----------------------------------|-------------------------|-----|-------|----------|----|------|--------|----------|---------|
| N73100180641.552UB5011 | N73100180641.552UB501121PN02 | 5P | SP0P00021P | PN | GUR | PCC Box Girder S011 N02 | UNDBR GURLEY GURLEY CRK | N73 | 10018 | 0641.552 | UB | 5011 | 21PN02 | 0641.552 | 641.562 |
| N73100180641.552UB5011 | N73100180641.552UB501103S | DE | DE0000003S | PN | GUR | Steel Walkway/Refuge S011 | UNDBR GURLEY GURLEY CRK | N73 | 10018 | 0641.552 | UB | 5011 | 03S | 0641.552 | 641.562 |
| N73100180641.552UB5012 | N73100180641.552UB501201C | DE | DE0000001C | PN | GUR | Concrete Deck S012 | UNDBR GURLEY GURLEY CRK | N73 | 10018 | 0641.552 | UB | 5012 | 01C | 0641.552 | 641.562 |
| N73100180641.552UB5012 | N73100180641.552UB501221PN01 | 5P | SP0P00021P | PN | GUR | PCC Box Girder S012 N01 | UNDBR GURLEY GURLEY CRK | N73 | 10018 | 0641.552 | UB | 5012 | 21PN01 | 0641.552 | 641.562 |
| N73100180641.552UB5012 | N73100180641.552UB501221PN02 | 5P | SP0P00021P | PN | GUR | PCC Box Girder S012 N02 | UNDBR GURLEY GURLEY CRK | N73 | 10018 | 0641.552 | UB | 5012 | 21PN02 | 0641.552 | 641.562 |
| N73100180641.552UB5012 | N73100180641.552UB501203S | DE | DE0000003S | PN | GUR | Steel Walkway/Refuge S012 | UNDBR GURLEY GURLEY CRK | N73 | 10018 | 0641.552 | UB | 5012 | 03S | 0641.552 | 641.562 |
| N73100180641.552UB5013 | N73100180641.552UB501301C | DE | DE0000001C | PN | GUR | Concrete Deck S013 | UNDBR GURLEY GURLEY CRK | N73 | 10018 | 0641.552 | UB | 5013 | 01C | 0641.552 | 641.562 |
| N73100180641.552UB5013 | N73100180641.552UB501321PN01 | 5P | SP0P00021P | PN | GUR | PCC Box Girder S013 N01 | UNDBR GURLEY GURLEY CRK | N73 | 10018 | 0641.552 | UB | 5013 | 21PN01 | 0641.552 | 641.562 |
| N73100180641.552UB5013 | N73100180641.552UB501321PN02 | 5P | SP0P00021P | PN | GUR | PCC Box Girder S013 N02 | UNDBR GURLEY GURLEY CRK | N73 | 10018 | 0641.552 | UB | 5013 | 21PN02 | 0641.552 | 641.562 |
| N73100180641.552UB5013 | N73100180641.552UB501303S | DE | DE0000003S | PN | GUR | Steel Walkway/Refuge S013 | UNDBR GURLEY GURLEY CRK | N73 | 10018 | 0641.552 | UB | 5013 | 03S | 0641.552 | 641.562 |
| N73100180641.552UBP001 | N73100180641.552UBP00133CN01 | 5B | SB0000003C | PN | GUR | Concrete Columns or File P001 N01 | UNDBR GURLEY GURLEY CRK | N73 | 10018 | 0641.552 | UB | P001 | 33CN01 | 0641.552 | 641.562 |
| N73100180641.552UBP001 | N73100180641.552UBP00133CN02 | 5B | SB0000003C | PN | GUR | Concrete Columns or File P001 N02 | UNDBR GURLEY GURLEY CRK | N73 | 10018 | 0641.552 | UB | P001 | 33CN02 | 0641.552 | 641.562 |
| N73100180641.552UBP001 | N73100180641.552UBP00131P | 5B | SB0000001P | PN | GUR | PCC Headstock P001 | UNDBR GURLEY GURLEY CRK | N73 | 10018 | 0641.552 | UB | P001 | 31P | 0641.552 | 641.562 |
| N73100180641.552UBP002 | N73100180641.552UBP00233CN01 | 5B | SB0000003C | PN | GUR | Concrete Columns or File P002 N01 | UNDBR GURLEY GURLEY CRK | N73 | 10018 | 0641.552 | UB | P002 | 33CN01 | 0641.552 | 641.562 |
| N73100180641.552UBP002 | N73100180641.552UBP00233CN02 | 5B | SB0000003C | PN | GUR | Concrete Columns or File P002 N02 | UNDBR GURLEY GURLEY CRK | N73 | 10018 | 0641.552 | UB | P002 | 33CN02 | 0641.552 | 641.562 |
| N73100180641.552UBP002 | N73100180641.552UBP00231P | 5B | SB0000001P | PN | GUR | PCC Headstock P002 | UNDBR GURLEY GURLEY CRK | N73 | 10018 | 0641.552 | UB | P002 | 31P | 0641.552 | 641.562 |
| N73100180641.552UBP003 | N73100180641.552UBP00333CN01 | 5B | SB0000003C | PN | GUR | Concrete Columns or File P003 N01 | UNDBR GURLEY GURLEY CRK | N73 | 10018 | 0641.552 | UB | P003 | 33CN01 | 0641.552 | 641.562 |
| N73100180641.552UBP003 | N73100180641.552UBP00333CN02 | 5B | SB0000003C | PN | GUR | Concrete Columns or File P003 N02 | UNDBR GURLEY GURLEY CRK | N73 | 10018 | 0641.552 | UB | P003 | 33CN02 | 0641.552 | 641.562 |
| N73100180641.552UBP003 | N73100180641.552UBP00331P | 5B | SB0000001P | PN | GUR | PCC Headstock P003 | UNDBR GURLEY GURLEY CRK | N73 | 10018 | 0641.552 | UB | P003 | 31P | 0641.552 | 641.562 |
| N73100180641.552UBP004 | N73100180641.552UBP00433CN01 | 5B | SB0000003C | PN | GUR | Concrete Columns or File P004 N01 | UNDBR GURLEY GURLEY CRK | N73 | 10018 | 0641.552 | UB | P004 | 33CN01 | 0641.552 | 641.562 |
| N73100180641.552UBP004 | N73100180641.552UBP00433CN02 | 5B | SB0000003C | PN | GUR | Concrete Columns or File P004 N02 | UNDBR GURLEY GURLEY CRK | N73 | 10018 | 0641.552 | UB | P004 | 33CN02 | 0641.552 | 641.562 |
| N73100180641.552UBP004 | N73100180641.552UBP00431P | 5B | SB0000001P | PN | GUR | PCC Headstock P004 | UNDBR GURLEY GURLEY CRK | N73 | 10018 | 0641.552 | UB | P004 | 31P | 0641.552 | 641.562 |
| N73100180641.552UBP005 | N73100180641.552UBP00533CN01 | 5B | SB0000003C | PN | GUR | Concrete Columns or File P005 N01 | UNDBR GURLEY GURLEY CRK | N73 | 10018 | 0641.552 | UB | P005 | 33CN01 | 0641.552 | 641.562 |
| N73100180641.552UBP005 | N73100180641.552UBP00533CN02 | 5B | SB0000003C | PN | GUR | Concrete Columns or File P005 N02 | UNDBR GURLEY GURLEY CRK | N73 | 10018 | 0641.552 | UB | P005 | 33CN02 | 0641.552 | 641.562 |
| N73100180641.552UBP005 | N73100180641.552UBP00531P | 5B | SB0000001P | PN | GUR | PCC Headstock P005 | UNDBR GURLEY GURLEY CRK | N73 | 10018 | 0641.552 | UB | P005 | 31P | 0641.552 | 641.562 |
| N73100180641.552UBP006 | N73100180641.552UBP00633CN01 | 5B | SB0000003C | PN | GUR | Concrete Columns or File P006 N01 | UNDBR GURLEY GURLEY CRK | N73 | 10018 | 0641.552 | UB | P006 | 33CN01 | 0641.552 | 641.562 |
| N73100180641.552UBP006 | N73100180641.552UBP00633CN02 | 5B | SB0000003C | PN | GUR | Concrete Columns or File P006 N02 | UNDBR GURLEY GURLEY CRK | N73 | 10018 | 0641.552 | UB | P006 | 33CN02 | 0641.552 | 641.562 |
| N73100180641.552UBP006 | N73100180641.552UBP00631P | 5B | SB0000001P | PN | GUR | PCC Headstock P006 | UNDBR GURLEY GURLEY CRK | N73 | 10018 | 0641.552 | UB | P006 | 31P | 0641.552 | 641.562 |
| N73100180641.552UBP007 | N73100180641.552UBP00733CN01 | 5B | SB0000003C | PN | GUR | Concrete Columns or File P007 N01 | UNDBR GURLEY GURLEY CRK | N73 | 10018 | 0641.552 | UB | P007 | 33CN01 | 0641.552 | 641.562 |
| N73100180641.552UBP007 | N73100180641.552UBP00733CN02 | 5B | SB0000003C | PN | GUR | Concrete Columns or File P007 N02 | UNDBR GURLEY GURLEY CRK | N73 | 10018 | 0641.552 | UB | P007 | 33CN02 | 0641.552 | 641.562 |
| N73100180641.552UBP007 | N73100180641.552UBP00731P | 5B | SB0000001P | PN | GUR | PCC Headstock P007 | UNDBR GURLEY GURLEY CRK | N73 | 10018 | 0641.552 | UB | P007 | 31P | 0641.552 | 641.562 |
| N73100180641.552UBP008 | N73100180641.552UBP00833CN01 | 5B | SB0000003C | PN | GUR | Concrete Columns or File P008 N01 | UNDBR GURLEY GURLEY CRK | N73 | 10018 | 0641.552 | UB | P008 | 33CN01 | 0641.552 | 641.562 |
| N73100180641.552UBP008 | N73100180641.552UBP00833CN02 | 5B | SB0000003C | PN | GUR | Concrete Columns or File P008 N02 | UNDBR GURLEY GURLEY CRK | N73 | 10018 | 0641.552 | UB | P008 | 33CN02 | 0641.552 | 641.562 |
| N73100180641.552UBP008 | N73100180641.552UBP00831P | 5B | SB0000001P | PN | GUR | PCC Headstock P008 | UNDBR GURLEY GURLEY CRK | N73 | 10018 | 0641.552 | UB | P008 | 31P | 0641.552 | 641.562 |
| N73100180641.552UBP009 | N73100180641.552UBP00933CN01 | 5B | SB0000003C | PN | GUR | Concrete Columns or File P009 N01 | UNDBR GURLEY GURLEY CRK | N73 | 10018 | 0641.552 | UB | P009 | 33CN01 | 0641.552 | 641.562 |
| N73100180641.552UBP009 | N73100180641.552UBP00933CN02 | 5B | SB0000003C | PN | GUR | Concrete Columns or File P009 N02 | UNDBR GURLEY GURLEY CRK | N73 | 10018 | 0641.552 | UB | P009 | 33CN02 | 0641.552 | 641.562 |
| N73100180641.552UBP009 | N73100180641.552UBP00931P | 5B | SB0000001P | PN | GUR | PCC Headstock P009 | UNDBR GURLEY GURLEY CRK | N73 | 10018 | 0641.552 | UB | P009 | 31P | 0641.552 | 641.562 |
| N73100180641.552UBP010 | N73100180641.552UBP01033CN01 | 5B | SB0000003C | PN | GUR | Concrete Columns or File P010 N01 | UNDBR GURLEY GURLEY CRK | N73 | 10018 | 0641.552 | UB | P010 | 33CN01 | 0641.552 | 641.562 |
| N73100180641.552UBP010 | N73100180641.552UBP01033CN02 | 5B | SB0000003C | PN | GUR | Concrete Columns or File P010 N02 | UNDBR GURLEY GURLEY CRK | N73 | 10018 | 0641.552 | UB | P010 | 33CN02 | 0641.552 | 641.562 |
| N73100180641.552UBP010 | N73100180641.552UBP01031P | 5B | SB0000001P | PN | GUR | PCC Headstock P010 | UNDBR GURLEY GURLEY CRK | N73 | 10018 | 0641.552 | UB | P010 | 31P | 0641.552 | 641.562 |
| N73100180641.552UBP011 | N73100180641.552UBP01133CN01 | 5B | SB0000003C | PN | GUR | Concrete Columns or File P011 N01 | UNDBR GURLEY GURLEY CRK | N73 | 10018 | 0641.552 | UB | P011 | 33CN01 | 0641.552 | 641.562 |
| N73100180641.552UBP011 | N73100180641.552UBP01133CN02 | 5B | SB0000003C | PN | GUR | Concrete Columns or File P011 N02 | UNDBR GURLEY GURLEY CRK | N73 | 10018 | 0641.552 | UB | P011 | 33CN02 | 0641.552 | 641.562 |
| N73100180641.552UBP011 | N73100180641.552UBP01131P | 5B | SB0000001P | PN | GUR | PCC Headstock P011 | UNDBR GURLEY GURLEY CRK | N73 | 10018 | 0641.552 | UB | P011 | 31P | 0641.552 | 641.562 |
| N73100180641.552UBP012 | N73100180641.552UBP01233CN01 | 5B | SB0000003C | PN | GUR | Concrete Columns or File P012 N01 | UNDBR GURLEY GURLEY CRK | N73 | 10018 | 0641.552 | UB | P012 | 33CN01 | 0641.552 | 641.562 |

3.10 Appendix E2 – MODIFIED Associated Equipment Items (AEI) Asset List Example

| Action | Equipment Number | Equipment Reference | Mod Equip Ref | Equipment Description | Equipment Status | Equipment Status Description | Location | Location Description | District Code | District Code Description | Equipment Class | Equipment Class Description | Equipment Group ID |
|--------|------------------|------------------------------|------------------------------|----------------------------|------------------|------------------------------|----------|----------------------|---------------|---------------------------------------|-----------------|-----------------------------|--------------------|
| Modify | 000000586805 | N73100180620.610UBA001 | N73100180620.637UBA001 | ABUTMENT 1 | PN | Project New | BLT | Bellatta | 0001 | AUSTRALIAN RAIL TRACK CORPORATION LTD | BA | | BAABUT |
| Modify | 000000587123 | N73100180620.610UBA002 | N73100180620.637UBA002 | ABUTMENT 2 | PN | Project New | BLT | Bellatta | 0001 | AUSTRALIAN RAIL TRACK CORPORATION LTD | BA | | BAABUT |
| Modify | 000000587596 | N73100180620.610UBS001 | N73100180620.637UBS001 | SPAN 1 | PN | Project New | BLT | Bellatta | 0001 | AUSTRALIAN RAIL TRACK CORPORATION LTD | BA | | BASPAN |
| Modify | 000000588239 | N73100180620.610UBS002 | N73100180620.637UBS002 | SPAN 2 | PN | Project New | BLT | Bellatta | 0001 | AUSTRALIAN RAIL TRACK CORPORATION LTD | BA | | BASPAN |
| Modify | 000000588872 | N73100180620.610UBP001 | N73100180620.637UBP001 | PIER 1 | PN | Project New | BLT | Bellatta | 0001 | AUSTRALIAN RAIL TRACK CORPORATION LTD | BA | | BAPIER |
| Modify | 000000648078 | N73100180620.610UBA00155C | N73100180620.637UBA00155C | Concrete Abutment A001 | PN | Project New | BLT | Bellatta | 0001 | AUSTRALIAN RAIL TRACK CORPORATION LTD | SB | | SB00000055C |
| Modify | 000000648079 | N73100180620.610UBA00156CN01 | N73100180620.637UBA00156CN01 | Concrete Wingwall A001 N01 | PN | Project New | BLT | Bellatta | 0001 | AUSTRALIAN RAIL TRACK CORPORATION LTD | SB | | SB00000056C |
| Modify | 000000648080 | N73100180620.610UBA00156CN02 | N73100180620.637UBA00156CN02 | Concrete Wingwall A001 N02 | PN | Project New | BLT | Bellatta | 0001 | AUSTRALIAN RAIL TRACK CORPORATION LTD | SB | | SB00000056C |
| Modify | 000000648081 | N73100180620.610UBA00255C | N73100180620.637UBA00255C | Concrete Abutment A002 | PN | Project New | BLT | Bellatta | 0001 | AUSTRALIAN RAIL TRACK CORPORATION LTD | SB | | SB00000055C |
| Modify | 000000648082 | N73100180620.610UBA00256CN01 | N73100180620.637UBA00256CN01 | Concrete Wingwall A002 N01 | PN | Project New | BLT | Bellatta | 0001 | AUSTRALIAN RAIL TRACK CORPORATION LTD | SB | | SB00000056C |
| Modify | 000000648083 | N73100180620.610UBA00256CN02 | N73100180620.637UBA00256CN02 | Concrete Wingwall A002 N02 | PN | Project New | BLT | Bellatta | 0001 | AUSTRALIAN RAIL TRACK CORPORATION LTD | SB | | SB00000056C |
| Modify | 000000648084 | N73100180620.610UBS00121PN01 | N73100180620.637UBS00121PN01 | PCC Box Girder S001 N01 | PN | Project New | BLT | Bellatta | 0001 | AUSTRALIAN RAIL TRACK CORPORATION LTD | SP | | SP0P00021P |
| Modify | 000000648085 | N73100180620.610UBS00121PN02 | N73100180620.637UBS00121PN02 | PCC Box Girder S001 N02 | PN | Project New | BLT | Bellatta | 0001 | AUSTRALIAN RAIL TRACK CORPORATION LTD | SP | | SP0P00021P |
| Modify | 000000648086 | N73100180620.610UBS00121PN03 | N73100180620.637UBS00121PN03 | PCC Box Girder S001 N03 | PN | Project New | BLT | Bellatta | 0001 | AUSTRALIAN RAIL TRACK CORPORATION LTD | SP | | SP0P00021P |
| Modify | 000000648087 | N73100180620.610UBS00121PN04 | N73100180620.637UBS00121PN04 | PCC Box Girder S001 N04 | PN | Project New | BLT | Bellatta | 0001 | AUSTRALIAN RAIL TRACK CORPORATION LTD | SP | | SP0P00021P |
| Modify | 000000648088 | N73100180620.610UBS00121PN05 | N73100180620.637UBS00121PN05 | PCC Box Girder S001 N05 | PN | Project New | BLT | Bellatta | 0001 | AUSTRALIAN RAIL TRACK CORPORATION LTD | SP | | SP0P00021P |
| Modify | 000000648089 | N73100180620.610UBS00121PN06 | N73100180620.637UBS00121PN06 | PCC Box Girder S001 N06 | PN | Project New | BLT | Bellatta | 0001 | AUSTRALIAN RAIL TRACK CORPORATION LTD | SP | | SP0P00021P |
| Modify | 000000648090 | N73100180620.610UBS00103S | N73100180620.637UBS00103S | Steel Walkway/Refuge S001 | PN | Project New | BLT | Bellatta | 0001 | AUSTRALIAN RAIL TRACK CORPORATION LTD | DE | | DE00000003S |
| Modify | 000000648091 | N73100180620.610UBS00221PN01 | N73100180620.637UBS00221PN01 | PCC Box Girder S002 N01 | PN | Project New | BLT | Bellatta | 0001 | AUSTRALIAN RAIL TRACK CORPORATION LTD | SP | | SP0P00021P |
| Modify | 000000648092 | N73100180620.610UBS00221PN02 | N73100180620.637UBS00221PN02 | PCC Box Girder S002 N02 | PN | Project New | BLT | Bellatta | 0001 | AUSTRALIAN RAIL TRACK CORPORATION LTD | SP | | SP0P00021P |
| Modify | 000000648093 | N73100180620.610UBS00221PN03 | N73100180620.637UBS00221PN03 | PCC Box Girder S002 N03 | PN | Project New | BLT | Bellatta | 0001 | AUSTRALIAN RAIL TRACK CORPORATION LTD | SP | | SP0P00021P |
| Modify | 000000648094 | N73100180620.610UBS00221PN04 | N73100180620.637UBS00221PN04 | PCC Box Girder S002 N04 | PN | Project New | BLT | Bellatta | 0001 | AUSTRALIAN RAIL TRACK CORPORATION LTD | SP | | SP0P00021P |
| Modify | 000000648095 | N73100180620.610UBS00221PN05 | N73100180620.637UBS00221PN05 | PCC Box Girder S002 N05 | PN | Project New | BLT | Bellatta | 0001 | AUSTRALIAN RAIL TRACK CORPORATION LTD | SP | | SP0P00 |

[illegible]

Appendix E2 – MODIFIED Associated Equipment Items (AEI) Asset List Example (continued)

| Plant Code 1 | Plant Code 1 Description | Plant Code 2 | Plant Code 2 Description | Plant Code 3 | Mod Plant N03 | Plant Code 3 Description | Plant Code 4 | Plant Code 4 Description | Plant Code 5 | Plant Code 5 Description | Plant Code 6 | Plant Code 6 Description | Corridor | Corridor Description | ARTC Maintained Y/N | ARTC Maintained Y/N Description |
|--------------|--------------------------|--------------|--------------------------|--------------|---------------|--------------------------|--------------|--------------------------|--------------|--------------------------|--------------|--------------------------|----------|-------------------------------|---------------------|---------------------------------|
| N73 | | 10018 | | 0620.610 | 0620.637 | | UB | | A001 | | | | NI | N73 - Werri Creek to Mungindi | Y | Yes |
| N73 | | 10018 | | 0620.610 | 0620.637 | | UB | | A002 | | | | NI | N73 - Werri Creek to Mungindi | Y | Yes |
| N73 | | 10018 | | 0620.610 | 0620.637 | | UB | | S001 | | | | NI | N73 - Werri Creek to Mungindi | Y | Yes |
| N73 | | 10018 | | 0620.610 | 0620.637 | | UB | | S002 | | | | NI | N73 - Werri Creek to Mungindi | Y | Yes |
| N73 | | 10018 | | 0620.610 | 0620.637 | | UB | | P001 | | | | NI | N73 - Werri Creek to Mungindi | Y | Yes |
| N73 | | 10018 | | 0620.610 | 0620.637 | | UB | | A001 | | SSC | | | | | |
| N73 | | 10018 | | 0620.610 | 0620.637 | | UB | | A001 | | 56CN01 | | | | | |
| N73 | | 10018 | | 0620.610 | 0620.637 | | UB | | A001 | | 56CN02 | | | | | |
| N73 | | 10018 | | 0620.610 | 0620.637 | | UB | | A002 | | SSC | | | | | |
| N73 | | 10018 | | 0620.610 | 0620.637 | | UB | | A002 | | 56CN01 | | | | | |
| N73 | | 10018 | | 0620.610 | 0620.637 | | UB | | A002 | | 56CN02 | | | | | |
| N73 | | 10018 | | 0620.610 | 0620.637 | | UB | | S001 | | 21PN01 | | | | | |
| N73 | | 10018 | | 0620.610 | 0620.637 | | UB | | S001 | | 21PN02 | | | | | |
| N73 | | 10018 | | 0620.610 | 0620.637 | | UB | | S001 | | 21PN03 | | | | | |
| N73 | | 10018 | | 0620.610 | 0620.637 | | UB | | S001 | | 21PN04 | | | | | |
| N73 | | 10018 | | 0620.610 | 0620.637 | | UB | | S001 | | 21PN05 | | | | | |
| N73 | | 10018 | | 0620.610 | 0620.637 | | UB | | S001 | | 21PN06 | | | | | |
| N73 | | 10018 | | 0620.610 | 0620.637 | | UB | | S001 | | 035 | | | | | |
| N73 | | 10018 | | 0620.610 | 0620.637 | | UB | | S002 | | 21PN01 | | | | | |
| N73 | | 10018 | | 0620.610 | 0620.637 | | UB | | S002 | | 21PN02 | | | | | |
| N73 | | 10018 | | 0620.610 | 0620.637 | | UB | | S002 | | 21PN03 | | | | | |
| N73 | | 10018 | | 0620.610 | 0620.637 | | UB | | S002 | | 21PN04 | | | | | |
| N73 | | 10018 | | 0620.610 | 0620.637 | | UB | | S002 | | 21PN05 | | | | | |
| N73 | | 10018 | | 0620.610 | 0620.637 | | UB | | S002 | | 21PN06 | | | | | |
| N73 | | 10018 | | 0620.610 | 0620.637 | | UB | | S002 | | 035 | | | | | |
| N73 | | 10018 | | 0620.610 | 0620.637 | | UB | | P001 | | 54C | | | | | |

[illegible]