

**Notice Type:** Train Operating Conditions (TOC) Waiver

**Location:** Flemington Goods Yard to Enfield Yard and Chullora Disposal Sidings, NSW

**Subject Title:** Out of gauge movement of Mariyung Passenger Cars on the ARTC Network

**Operator(s):** Southern Shorthaul Railroad      **Train Number:** Not Applicable

**Corridor/line:** SSFL / MFN      **Direction:** Not Applicable

**Effective From:** 01/07/2024

**Effective To:** 01/12/2024

**Reference Documents:**

**Route Access Standard:** RAS – General Information & TOC

**TOC Manual:** Section 10 – Rolling Stock Data

This TOC waiver provides and extension to TOC Waiver 24001 for a further 6 months.

**General Details / Operating Condition:**

A Waiver to the conditions of the ARTC TOC Manual is issued for the movement of Mariyung Passenger Vehicles (Previously referred to as NIF) on the ARTC Network from Flemington Goods Yard to Enfield Yard, Sydney Trains Main South Line and Chullora Disposal Sidings, NSW, including return as specified in the route and operating conditions below. Vehicles are to be locomotive hauled on the ARTC Network.

**NOTE:**

- There are no restrictions for passing movements for other rail traffic. Pathing is based on infrastructure clearances, not track centre clearances.
- The vehicles listed in the table below shall be marshalled in an appropriate consist and hauled with appropriate locomotives.
- Vehicles shall be prepared for transfer including securing of pantographs.

**Mariyung Vehicle Details:**

\*\* Vehicles are NOT registered for operation and are only permitted for the movement as detailed below.

Vehicle Code	Description	Max Speed	Max Gross Tonnes	Length Metres	Draw Gear Capacity	Notes
DDA	Trailer Driver Car	25	48.5	20.435	n/a	Numbers 9301-9372, 9401-9467

Vehicle Code	Description	Max Speed	Max Gross Tonnes	Length Metres	Draw Gear Capacity	Notes
DND	Motor Car	25	52.0	20.340	n/a	Numbers 8301-8372, 8401-8467
DN	Motor Car	25	51.0	20.340	n/a	Numbers 8501-8572, 8601-8667
DT	Trailer Car	25	46.1	20.435	n/a	Numbers 9601-9667
DNL	Motor Car	25	52.1	20.340	n/a	Numbers 8801-8867
DD	Trailer Car	25	48.3	20.435	n/a	Numbers 9701-9772 99801-9867

The movements are subject to the following operating conditions:

**Flemington Goods Yard to Enfield Yard**

- Movement as detailed (Refer to Figure 1 and Figure 2):
  - From Flemington Junction to Enfield Yard:
    - Enter the ARTC Network at 18.909km Up Main from Flemington Junction.
    - Travel Up Main through Chullora Junction to Enfield.
    - At points 333B Up Main diverge through cross over to Through Road 1.
  - From Enfield Yard to Flemington Junction:
    - From Through Road 1, cross over to Up Main at points 333A.
    - At points 339A Up Main diverge through cross over to Down Main.
    - Travel Down Main through Chullora Junction to Flemington Junction.
- **Maximum speed of operation limited to 25km/hr.**
- Specific Speed restrictions:
  - At 18.223km Weeroona Road Bridge.
    - Movement to pass at 10km/hr until clear of location.
  - At 17.552km caution around ground signal.
    - Movement to pass at 10km/hr until clear of location.
  - At 16.835km caution around ground signal.
    - Movement to pass at 10km/hr until clear of location.

- Air and hand brakes to be fully operational on all vehicles.
- Passenger carriage to be unattended during movement unless by maintenance staff observing vehicle condition.

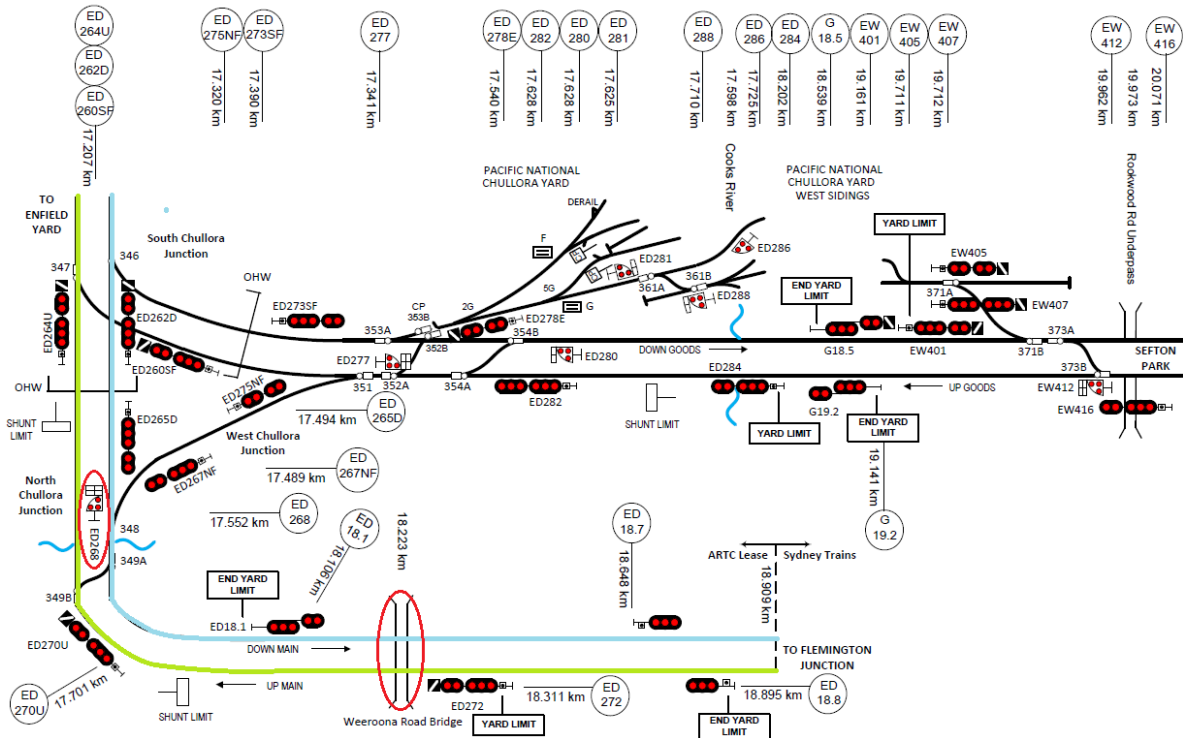


Figure 1: Route through Chullora Junction [Green towards Enfield Yard - Blue towards Flemington Junction.]

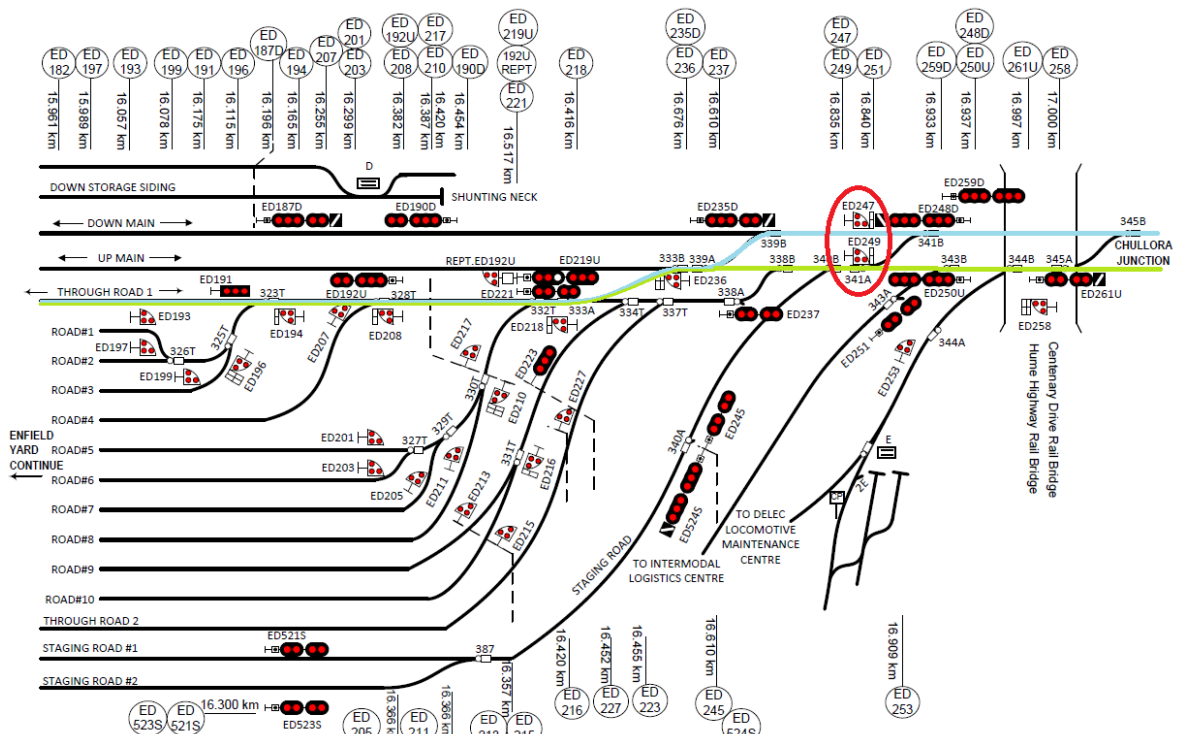


Figure 2: Route through Enfield [Green towards Enfield Yard - Blue towards Flemington Junction]

**Flemington Goods Yard to Chullora Disposal Sidings**

- Movement as detailed (Refer to Figures 3 and 4):
  - From Flemington Junction to Chullora Disposal Sidings:
    - **Head End Movement**
    - Enter the ARTC Network at 18.909km Up Main from Flemington Junction.
    - Travel Up Main through Chullora Junction to Enfield.
    - At points 333B Up Main diverge through cross over to Through Road 1.
    - **Propelled Movement (Piloted at 10 km/h)**
    - From Through Road 1, diverge through cross over to Up Main at points 333A.
    - At points 339A Up Main diverge through cross over to Down Main.
    - Travel Down Main through South Chullora Junction towards Chullora Disposal Sidings.
    - At points 353A Down Goods diverge through cross over to Chullora Disposal Sidings.
  - From Enfield Yard to Flemington Junction:
    - **Head End Movement**
    - From Chullora Disposal Sidings, cross over to Down Goods at 353B Points.
    - At points 352B Down Goods diverge through cross over to Up Goods.
    - At points 351 Down Goods diverge through West Chullora Junction.
    - Travel Down Main to Flemington Junction.
- **Maximum speed of head-end operations limited to 25km/h.**
- **Maximum speed of propelled operations limited to 10km/h.**
- **Propelled operations must be piloted.**
- Specific Speed restrictions:
  - At 18.223km Weeroona Road Bridge.
    - Movement to pass at 10km/hr until clear of location.
  - At 17.597km caution around ground signal.
    - Movement to pass at 10km/hr until clear of location.
  - At 16.835km caution around ground signal.
    - Movement to pass at 10km/hr until clear of location.
  - At 17.465km caution around ground signal.
    - Movement to pass at 10km/hr until clear of location.
- Air and hand brakes to be fully operational on all vehicles.
- Passenger carriage to be unattended during movement unless by maintenance staff observing vehicle condition.

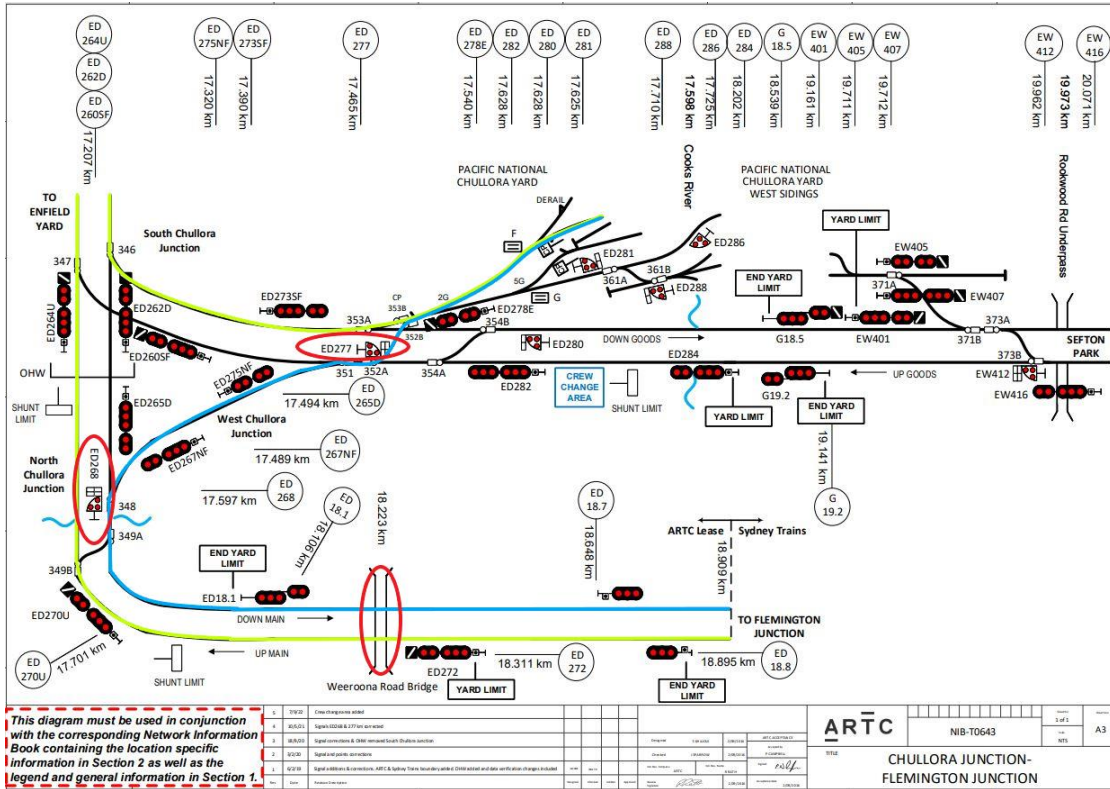


Figure 3: Route through Chullora Junction [Green towards Sidings - Blue towards Flemington Junction.]

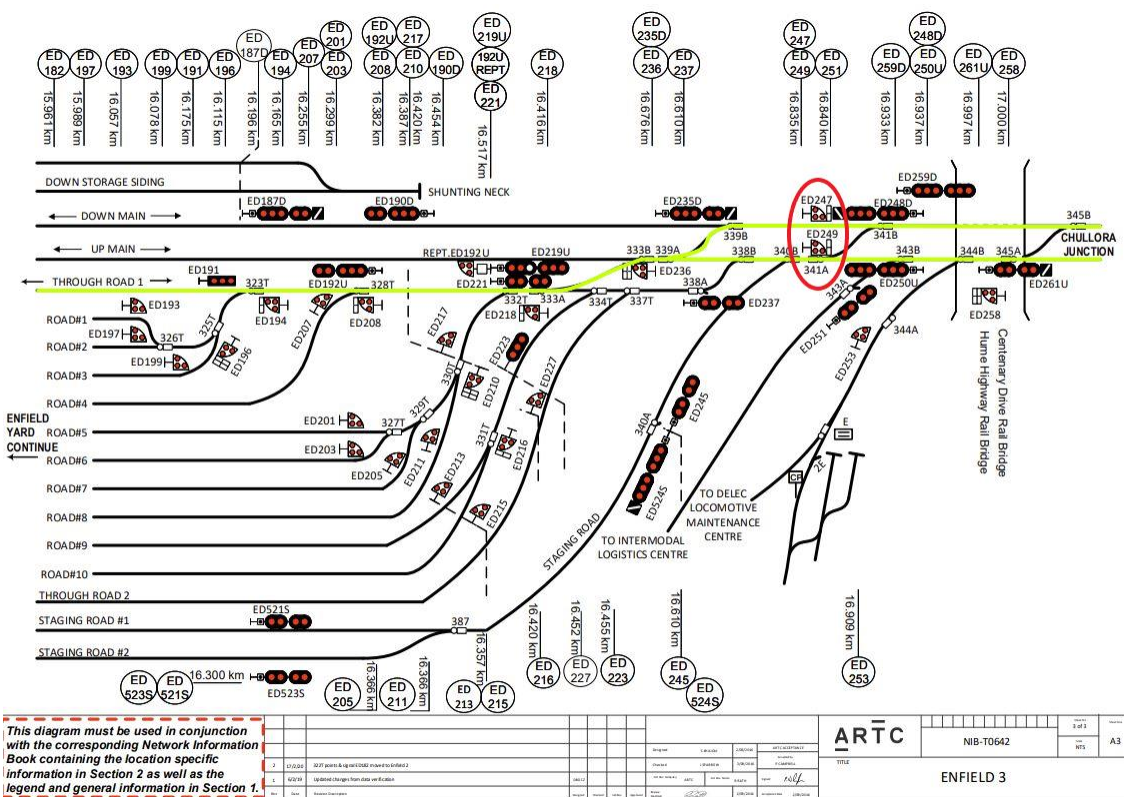


Figure 4: Route through Enfield [Green towards Sidings - Blue towards Flemington Junction.]

## Flemington Goods Yard to Sydney Trains Main South Line

- Movement as detailed (Refer to Figures 5 and 6):
  - From Flemington Junction to Sydney Main South Line:
    - Enter the ARTC Network at 18.909km Up Main from Flemington Junction.
    - At points 349B Up Main diverge through cross over to Down Main.
    - At points 348 Down Main diverge through West Chullora Junction onto Up Goods.
    - At points 352A Up Goods diverge through cross over to Down Goods.
    - At points 373A Down Goods diverge through cross over to Up Goods.
    - Travel Up Goods until Sydney Trains Main South Line
- Note: **there is no return via this route permitted (one-way operation).**
- **Maximum speed limited to 25km/h.**
- Specific Speed restrictions:
  - At 18.223km Weeroona Road Bridge.
    - Movement to pass at 10km/hr until clear of location.
  - At 17.597km caution around ground signal.
    - Movement to pass at 10km/hr until clear of location.
  - At 16.835km caution around ground signal.
    - Movement to pass at 10km/hr until clear of location.
  - At 17.465km caution around ground signal.
    - Movement to pass at 10km/hr until clear of location.
- Air and hand brakes to be fully operational on all vehicles.
- Passenger carriage to be unattended during movement unless by maintenance staff observing vehicle condition.

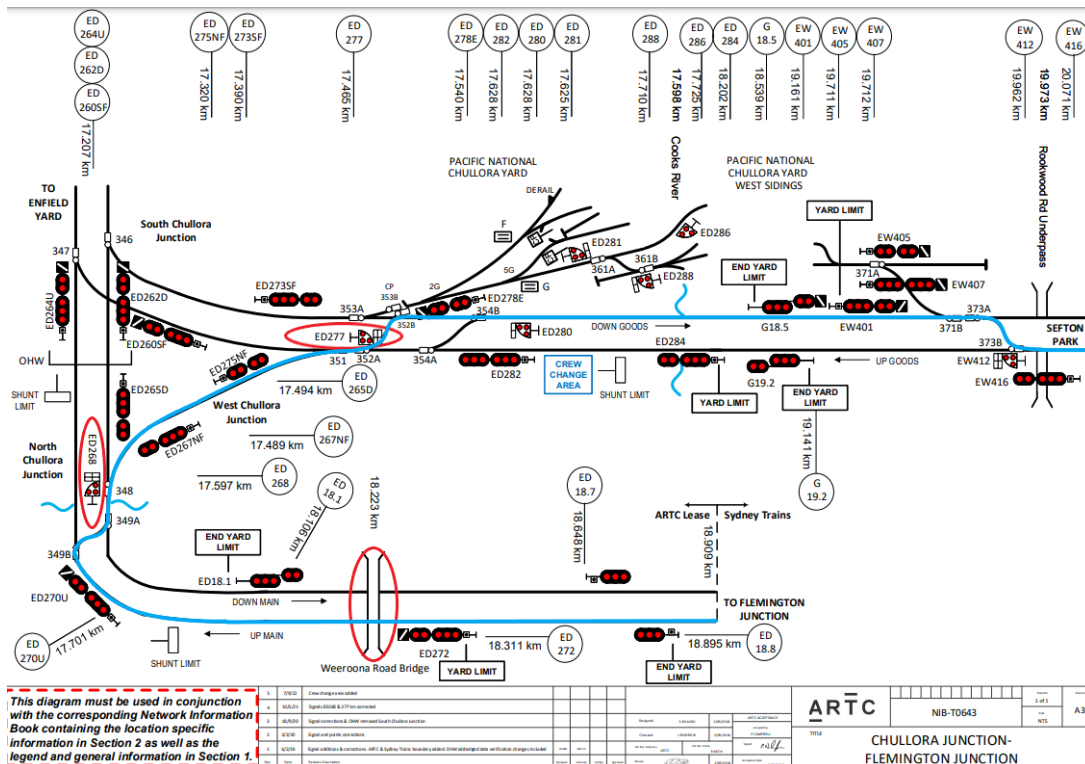


Figure 5: Route through Chullora Junction [Blue towards Sydney Trains Main South Line]

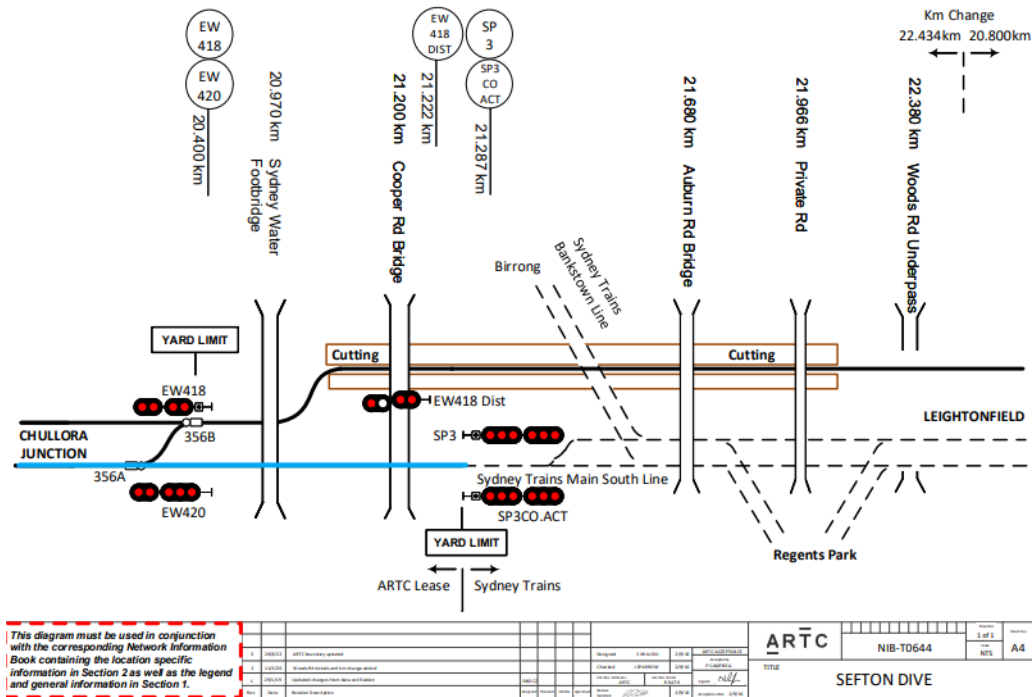


Figure 6: Route through Sefton Dive [Blue towards Sydney Trains Main South Line]

**Approval:**

Approved by: Carolyn Southern – Operations Standards Manager

Date: 28/06/2024